

Edgar Filing: DESWELL INDUSTRIES INC - Form 20-F

DESWELL INDUSTRIES INC
Form 20-F
July 09, 2002

SECURITIES AND EXCHANGE COMMISSION

Washington, D.C. 20549

FORM 20-F

[] Registration Statement Pursuant to Section 12(b) or (g) of the
Securities Exchange Act of 1934

OR

[*] Annual Report Pursuant to Section 13 or 15(d) of the Securities Exchange
Act of 1934

For the Fiscal Year Ended:
March 31, 2002

Commission File Number:
0-26448

DESWELL INDUSTRIES, INC.
(Exact name of registrant as specified in its charter)

British Virgin Islands
(Jurisdiction of incorporation or organization)

Unit 516-517
Hong Leong Industrial Complex
4 Wang Kwong Road
Kowloon Bay, Kowloon, Hong Kong
(Address of principal executive offices)

Securities registered or to be registered pursuant to Section 12(b) of
the Act: NONE

Securities registered pursuant to Section 12(g) of the Act:

Common shares, \$0.01 par value per share

Securities for which there is a reporting obligation pursuant to Section 15(d)
of the Act: NONE

As of March 31, 2002, there were 5,580,331 common shares of the registrant
outstanding.

Indicate by check mark whether the registrant: (i) has filed all reports
required to be filed by Section 13 or 15(d) of the Securities Exchange Act of
1934 during the preceding 12 months (or for such shorter period that the
registrant was required to file such reports), and (ii) has been subject to such
filing requirements for the past 90 days.

Yes [X] No

Edgar Filing: DESWELL INDUSTRIES INC - Form 20-F

--- ---

Indicate by check mark which financial statement item the registrant has elected to follow:

Item 17 Item 18 [X]
--- ---

TABLE OF CONTENTS

Financial Statements and Currency Presentation..... 2

PART I

Item 1. Identity of Directors, Senior Management and Advisors..... 3

Item 2. Offer Statistics and Expected Timetable 3

Item 3. Key Information..... 3

Item 4. Information on the Company..... 9

Item 5. Operating and Financial Review and Prospects.....20

Item 6. Directors, Senior Management and Employees.....27

Item 7. Major Shareholders and Related Party Transactions.....30

Item 8. Financial Information.....33

Item 9. The Listing.....34

Item 10. Additional Information.....35

Item 11. Quantitative and Qualitative Disclosure about Market Risk.....50

Item 12. Description of Securities Other than Equity Securities.....50

PART II

Item 13. Defaults, Dividend Arrearages and Delinquencies.....51

Item 14. Material Modifications to the Rights of Security Holders and Use of Proceeds.....51

Item 15. [Reserved]

Item 16. [Reserved]

PART III

Item 17. Financial Statements.....51

Item 18. Financial Statements.....51

Item 19. Exhibits.....52

SIGNATURES54

This Annual Report on Form 20-F contains forward-looking statements. These statements are subject to certain risks and uncertainties that could cause actual results to differ materially from those anticipated in the forward-looking statements. Factors that might cause such a difference include, but are not limited to those discussed in the section entitled Risk Factors under Item 3. -- Key Information.

Readers should not place undue reliance on forward-looking statements, which reflect management's view only as of the date of this Report. The Company undertakes no obligation to publicly revise these forward-looking statements to reflect subsequent events or circumstances. Readers should also carefully review the risk factors described in other documents the Company files from time to time with the Securities and Exchange Commission.

Edgar Filing: DESWELL INDUSTRIES INC - Form 20-F

As used in this Report, "we," "our," "us," "Deswell" or the "Company" refers to Deswell Industries, Inc. and its subsidiaries unless the context otherwise indicates.

FINANCIAL STATEMENTS AND CURRENCY PRESENTATION

The Company prepares its consolidated financial statements in accordance with generally accepted accounting principles in the United States of America and publishes such statements in United States dollars. See "Independent Auditors' Report" included elsewhere herein. The Company publishes its financial statements in United States dollars as the Company is incorporated in the British Virgin Islands, where the currency is the United States dollar, and the functional currency of the Company's subsidiaries is the Hong Kong dollar, whose exchange rate has been fixed at approximately 7.80 Hong Kong dollars to \$1.00 since 1983. All dollar amounts ("\$") set forth in this Report are in United States dollars, the references to HK\$ refer to Hong Kong dollars and RMB to Chinese renminbi.

2

PART I

ITEM 1. IDENTITY OF DIRECTORS, SENIOR MANAGEMENT AND ADVISORS

Not applicable.

ITEM 2. OFFER STATISTICS AND EXPECTED TIMETABLE

Not applicable.

ITEM 3. KEY INFORMATION

SELECTED FINANCIAL DATA(1)

The selected consolidated financial data set forth below should be read in conjunction with our consolidated financial statements and notes thereto included elsewhere in this Report. The selected income statement data for each of the three fiscal years in the period ended March 31, 2002, and the balance sheet data as of March 31, 2001 and 2002 are derived from our audited consolidated financial statements included in this Report. The selected income statement data for the years ended March 31, 1998 and 1999, and the balance sheet data as of March 31, 1998, 1999 and 2000 are derived from our audited consolidated financial statements, which are not included in this Report.

INCOME STATEMENT DATA	(IN THOUSANDS, EXCEPT PER SHARE AND PERCENTAGE DATA)				
	YEAR ENDED MARCH 31,				
	1998	1999	2000	2001	2002
Net sales	\$66,169	\$53,439	\$60,958	\$80,847	\$83,320
Cost of sales	36,246	32,179	38,262	52,596	54,448

Edgar Filing: DESWELL INDUSTRIES INC - Form 20-F

Gross profit	29,923	21,260	22,696	28,251	28,872
Selling, general and administrative expenses	14,067	10,364	11,970	15,414	14,939
Operating income	15,856	10,896	10,726	12,837	13,933
Interest expense	(2)	(306)	(3)	(6)	(26)
Other income, net	1,094	939	898	915	877
Income before income taxes	16,948	11,529	11,621	13,746	14,784
Income taxes	688	462	890	315	535
Income before minority interests	16,260	11,067	10,731	13,431	14,249
Minority interests	3,289	1,575	433	621	925
Net income	\$12,971	\$9,492	\$10,298	\$12,810	\$13,324
Basic earnings per share (2) (3)	\$ 2.59	\$ 1.73	\$ 1.90	\$ 2.38	\$ 2.38
Average number of shares outstanding--basic (2)	5,006	5,478	5,412	5,376	5,602
Diluted earnings per share (3)	\$2.40	\$1.72	\$1.89	\$2.36	\$2.36
Average number of shares outstanding--diluted (2)	5,394	5,524	5,449	5,435	5,644

STATISTICAL DATA:

Gross margin	45.2%	39.8%	37.2%	34.9%	34.7%
Operating margin	24.0%	20.4%	17.6%	15.9%	16.7%
Dividends per share	\$0.70	\$1.08	\$0.88	\$0.88	\$1.29

BALANCE SHEET DATA

AT MARCH 31,

	1998	1999	2000	2001	2002
Working capital	\$35,968	\$41,066	\$44,727	\$47,356	\$54,922
Total assets	59,144	64,273	71,841	83,466	94,744
Long-term debt, less current portion	--	--	--	--	--
Total debt	--	--	--	--	482
Shareholders' equity	45,211	48,767	53,031	63,877	69,651

(1) Our consolidated financial statements are prepared in accordance with generally accepted accounting principles in the United States of America and are stated in U.S. dollars. See "Financial Statements and Currency Presentation."

(2) Basic EPS excludes dilution from potential common shares and is computed by dividing income available to common stockholders by the weighted-average number of common shares outstanding for the period. Diluted EPS reflects the potential dilution from potential common shares.

(3) Net income per share amounts presented above are calculated without regard to the effects of the three-for-two stock split payable on July 22, 2002 (see Note 15 of Notes to Consolidated Financial Statements). Net income per share information calculated on a post stock split basis is as follows:

Edgar Filing: DESWELL INDUSTRIES INC - Form 20-F

Basic:					
Net income per share	\$1.73	\$1.16	\$1.27	\$1.59	\$1.59
	=====	=====	=====	=====	=====
Weighted average common shares	7,509	8,217	8,118	8,064	8,403
	=====	=====	=====	=====	=====
Diluted:					
Net income per share	\$1.60	\$1.15	\$1.26	\$1.57	\$1.57
	=====	=====	=====	=====	=====
Weighted average common shares	8,091	8,286	8,174	8,153	8,466
	=====	=====	=====	=====	=====

3

RISK FACTORS

We may from time to time make written or oral forward-looking statements. Written forward-looking statements may appear in this document and other documents filed with the Securities and Exchange Commission, in press releases, in reports to shareholders, on our website, and other documents. The Private Securities Reform Act of 1995 contains a safe harbor for forward-looking statements on which we rely in making such disclosures. In connection with this "safe harbor" we are hereby identifying important factors that could cause actual results to differ materially from those contained in any forward-looking statements made by us or on our behalf. Any such statement is qualified by reference to the following cautionary statements:

WE FACE NUMEROUS RISKS AS A RESULT OF OUR OPERATIONS IN CHINA AND HONG KONG.

Our manufacturing facilities are located in China. As a result, our operations and assets are subject to significant political, economic, legal and other uncertainties associated with doing business in China, which are discussed in more detail below.

The Chinese government could change its policies toward or even nationalize private enterprise, which could result in the total loss of our investment in that country.

Over the past several years, the Chinese government has pursued economic reform policies including the encouragement of private economic activity and greater economic decentralization. The Chinese government may not continue to pursue these policies or may significantly alter them to our detriment from time to time without notice. Changes in policies by the Chinese government resulting in changes in laws, regulations, or their interpretation, or the imposition of confiscatory taxation, restrictions on currency conversion or imports and sources of supply could materially and adversely affect us. The nationalization or other expropriation of private enterprises by the Chinese government could result in the total loss of our investment in that country.

There may be a lack of remedies and impartiality under the Chinese legal system that prevents us from enforcing the tenancy agreements under which we operate our factories.

We operate our factories under tenancy agreements with the local Chinese government. These tenancy agreements may be difficult to enforce in China, which could force us to accept terms that may not be as favorable as those provided in

Edgar Filing: DESWELL INDUSTRIES INC - Form 20-F

our tenancy agreements. Unlike the U.S., China has a civil law system based on written statutes in which judicial decisions have little precedential value. The Chinese government has enacted some laws and regulations dealing with matters such as corporate organization and governance, foreign investment, commerce, taxation and trade. However, their experience in implementing, interpreting and enforcing these laws and regulations is limited, and our ability to enforce commercial claims or to resolve commercial disputes is unpredictable. These matters may be subject to the exercise of considerable discretion by agencies of the Chinese government, and forces unrelated to the legal merits of a particular matter or dispute may influence their determination.

If our business licenses in China are not renewed, we would be required to move our operations out of China, which would impair our profitability, competitiveness and market position and jeopardize our ability to continue operations.

Our activities in China require business licenses. This requires a review and approval of our activities by various national and local agencies of Chinese government. The Chinese government may not continue to approve our activities or grant or renew our licenses. Our inability to obtain needed approvals or licenses could prevent us from continuing to conduct operations in China. If for any reason we were required to move our manufacturing operations outside of China, our profitability would be substantially impaired, our competitiveness and market position would be materially jeopardized and we may not be able to continue operations.

A fire, severe weather, flood, or other act of God could cause significant damage to our properties in China and disrupt our business operations.

Firefighting and disaster relief or assistance in China are primitive by Western standards. At March 31, 2002, we maintained fire, casualty and theft insurance aggregating approximately US\$33,448,000 covering certain

4

of our stock in trade, goods and merchandise, furniture and equipment and factory buildings in China. The proceeds of this insurance may not be sufficient to cover material damage to, or the loss of, any of our factories due to fire, severe weather, flood, or other act of God or cause. We do not maintain any business interruption insurance.

Possible changes and uncertainties in economic policies in the Special Economic Zones of China in which we operate could harm our operations by eliminating benefits we currently enjoy.

As part of its economic reform, China has designated certain areas, including Shenzhen where we have certain manufacturing facilities, as Special Economic Zones. Foreign enterprises in these areas benefit from greater economic autonomy and more favorable tax treatment than enterprises in other parts of China. Changes in the policies or laws governing Special Economic Zones could eliminate these benefits. Moreover, economic reforms and growth in China have been more successful in certain provinces than others, and the continuation or increase of these disparities could affect the political or social stability of China.

Uncertain applications of Chinese tax laws could subject us to greater taxes in China.

Edgar Filing: DESWELL INDUSTRIES INC - Form 20-F

Under applicable Chinese law, we have been afforded a number of tax concessions by the Chinese taxing authorities and have avoided paying taxes on a substantial portion of our operations in China by reinvesting all or part of the profits attributable to our Chinese plastic manufacturing subsidiary for at least five years. The Chinese tax system is subject to substantial uncertainties and was subject to significant changes enacted on January 1, 1994, the interpretation and enforcement of which are still uncertain. Currently, under the Chinese tax system we can obtain tax breaks by reinvesting profits of certain of our subsidiaries in China. We are considering the reinvestment of a portion of our profits of \$4,000,000, from our Chinese plastic manufacturing subsidiary for the year ended December 31, 2001 and, if we make such reinvestment, we expect we will only be subject to taxes of 7.5% on these operations for the remaining profits for tax year ended December 31, 2001. For the tax year commencing January 1, 2002, the Company will be subject to taxes of 10% on these operations. Changes in Chinese tax laws or their interpretation or application may, subject us to greater Chinese taxation in the future.

We could suffer losses from corrupt or fraudulent business practices. Conducting business in China is inherently risky.

Corruption, extortion, bribery, pay-offs, theft, and other fraudulent practices are common in China. We could suffer losses from these practices if we are not successful in implementing and maintaining preventative measures.

Controversies affecting China's trade with the United States could harm our operations or depress our stock price.

While China has been granted permanent most favored nation trade status in the United States, controversies between the United States and China may arise that threaten the status quo involving trade between the United States and China. These controversies could adversely affect our business by, among other things, causing our products in the United States to become more expensive, which could result in a reduction in the demand for our products by customers in the United States. Political or trade friction between the United States and China, whether or not actually affecting our business, could also adversely affect the prevailing market price of our common shares.

Changes in currency rates involving the Hong Kong dollar or Chinese yuan could increase our expenses or cause economic or political problems affecting our business.

Our sales are predominately denominated in Hong Kong dollars. The Chinese government may not continue to maintain the present currency exchange mechanism, which fixes the Hong Kong dollar at approximately 7.80 to each United States dollar. If the currency exchange mechanism between the Hong Kong dollar and the U.S. dollar is changed, our results of operations and financial condition could be materially adversely affected. Any material increase in the value of the Hong Kong dollar or Chinese yuan relative to the U.S. dollar would increase our expenses. A devaluation of the Hong Kong dollar or yuan relative to the U.S. dollar would be likely to reduce our expenses. However, any benefits we receive from devaluation could be offset if the devaluation results in inflation or political unrest.

Political and economic instability of Hong Kong could harm our operations.

Edgar Filing: DESWELL INDUSTRIES INC - Form 20-F

Our executive and sales office, and several of our customers and suppliers are located in Hong Kong, formerly a British Crown Colony. Sovereignty over Hong Kong was transferred effective July 1, 1997 to China. The continued stability of political, economic or commercial conditions in Hong Kong remains uncertain, and any instability could have an adverse impact on our business.

WE ARE DEPENDENT ON A FEW MAJOR CUSTOMERS AND HAVE NO LONG-TERM CONTRACTS WITH THEM. OUR SALES WOULD SUBSTANTIALLY DECREASE AND WE WOULD SUFFER DECREASES IN NET INCOME OR LOSSES IF WE LOSE ANY OF OUR MAJOR CUSTOMERS, IF THEY SUBSTANTIALLY REDUCE THEIR ORDERS OR IF THEY ARE UNABLE TO PAY US.

Historically, a substantial percentage of our sales have been to a small number of customers. Our four largest customers during the year ended March 31, 2002 were Inter-Tel Incorporated, Kyocera Mita Industrial Co. (H.K.) Limited, VTech Telecommunications Limited and Epson Precision (H.K.) Limited. Each of these customers individually accounted for 10% or more of our total net sales during the year ended March 31, 2002 and accounted for an aggregate of 71.4%, 69.3% and 58.0%, respectively, of our total net sales during the years ended March 31, 2000, 2001 and 2002, respectively. Our sales are based on purchase orders and we have no long-term contracts with any of our customers and the percentage of sales to any of our customers may fluctuate from time to time. The loss of any one of our largest customers or a substantial reduction in orders from any of them would adversely impact our sales and decrease our net income or cause us to incur losses unless and until we were able to replace the customer or order with one or more of comparable size. In addition, a substantial portion of our sales is made on credit and our results of operations would be adversely affected if a major customer were unable to pay for our products or services.

WE HAVE NO LONG-TERM CONTRACTS TO OBTAIN PLASTIC RESINS AND OUR PROFIT MARGINS AND NET INCOME COULD SUFFER FROM AN INCREASE IN RESIN PRICES.

The primary materials used by us in the manufacture of our plastic injection molded products are various plastic resins. The following table shows our cost of plastic resins as a percentage of our cost of plastic products sold and as a percentage of our total costs of goods sold for the years ended March 31, 2000, 2001 and 2002:

	Year ended March 31,		
	2000	2001	2002
Resins cost as a % of plastic products sold	55%	58%	52%
Resins cost as a % of total cost of goods sold	31%	32%	25%

We have no long-term contracts with our resin suppliers. Accordingly, our financial performance is dependent to a significant extent on resin markets and the ability to pass through price increases to our customers. The capacity, supply and demand for plastic resins and the petrochemical intermediates from which they are produced are subject to cyclical price fluctuations, including those arising from supply shortages. Consequently, resin prices may fluctuate as a result of changes in natural gas and crude oil prices and the capacity, supply and demand for resin and petrochemical intermediates from which they are produced. We have found that increases in resin prices are difficult to pass on to our customers. In the past increases in resin prices have increased our costs of goods sold and adversely affected our profit margins. A significant increase in resin prices in the future could likewise adversely affect our profit margins and results of operations.

Edgar Filing: DESWELL INDUSTRIES INC - Form 20-F

WE ARE FACING INCREASING COMPETITION, WHICH HAS HAD AN ADVERSE EFFECT ON OUR GROSS PROFIT MARGINS.

Over the last few years we have been forced to lower our prices as a result of increasing competition in our market segments. This has resulted in lower gross profit margins, which have declined

- 0.6%, from 34.9% during the year ended March 31, 2001 to 34.7% during the year ended March 31, 2002,
- 6.2%, from 37.2% during the year ended March 31, 2000 to 34.9% during the year ended March 31, 2001; and
- 6.5%, from 39.8% during the year ended March 31, 1999 to 37.2% during the year ended March 31, 2000.

6

If we are forced to continue to lower our prices and are unable to offset this decrease by increasing our sales volumes, our net sales and gross margins will decline. If we cannot stem the decline in our gross margins, our financial position may be harmed and our stock price may decrease.

POLITICAL INSTABILITY, AND CHANGES IN IMPORT/EXPORT REGULATIONS, TARIFFS AND FREIGHT RATES IN COUNTRIES OTHER THAN CHINA WHERE WE DO BUSINESS COULD CAUSE OUR PROFIT MARGINS TO DECLINE.

Because of the international nature of our operations and customers, our business is subject to political and economic risks beyond those involving China, including political instability, and changes in import/export regulations, tariffs and freight rates. Changes in tariff structures or other trade policies could adversely affect our suppliers or customers or decrease the cost of supplies for our competitors. Japan's trade surplus has forced a revaluation of the Japanese yen on international markets that may have the effect of making material or components that we use to manufacture our products more expensive.

OUR LOSS OF CERTAIN MEMBERS OF OUR SENIOR MANAGEMENT COULD CAUSE DISRUPTIONS IN OUR BUSINESS AND HARM OUR CUSTOMER RELATIONSHIPS THEREBY ADVERSELY AFFECTING SALES.

We depend to a large extent on the abilities and continued participation of

- Richard Lau, our Chairman of the Board and Chief Executive Officer;
- C. P. Li, our Executive Director, General Manager in charge of our day-to-day manufacturing and administrative operations for plastic products, and Chief Financial Officer;
- C. W. Leung, Executive Director of Engineering in charge of the mold division and engineering for our plastic manufacturing operations;
- S. K. Lee, our Director of Administration and Marketing and General Manager in charge of our day-to-day administrative and

Edgar Filing: DESWELL INDUSTRIES INC - Form 20-F

marketing operations for electronic products;

- M. C. Tam, our Director of Engineering and Manufacturing, in charge of manufacturing and operations for electronic products; and
- Dickson Lam, our Director of Marketing for plastic and electronic products.

Messrs. Lau, Li and Leung founded our company and have played integral roles in the management, growth and development of our company in general and our plastic injection molding business in particular. They have developed and maintain relationships with several of our key customers in our plastic injection molding business. Mr. S. K. Lee and Mr. M. C. Tam founded our electronic products manufacturing business and have developed and continue to manage it since we acquired the business from them. Mr. Dickson Lam has developed and maintains several key relationships with our key customers in our electronic and plastic injection products manufacturing business. We have no employment contracts with any of these executives and their loss would require us to find executives suitable to replace them, which could be difficult and disruptive to our business. Customers with whom they have relationships may cease to deal with us or choose to use a competitor for a greater portion of their business, resulting in our loss of sales.

THE CONCENTRATION OF SHARE OWNERSHIP IN OUR SENIOR MANAGEMENT ALLOWS THEM TO CONTROL OR SUBSTANTIALLY INFLUENCE THE OUTCOME OF MATTERS REQUIRING SHAREHOLDER APPROVAL.

Our senior management as a group, each of whom are also members and constitute a majority of our board of directors, directly or indirectly through an affiliated company beneficially own more than 45% of our shares at March 31, 2002 . As a result, acting together they may be able to control, and they can substantially influence, the outcome of all matters requiring approval by our shareholders, including the election of directors and approval of significant corporate transactions. This ability may have the effect of delaying or preventing a change in control of Deswell, or causing a change in control of Deswell that may not be favored by our other shareholders.

7

OUR BOARD'S ABILITY TO AMEND OUR CHARTER WITHOUT SHAREHOLDER APPROVAL COULD HAVE ANTI-TAKEOVER EFFECTS THAT COULD PREVENT A CHANGE IN CONTROL.

As permitted by the law of the British Virgin Islands, our Memorandum and Articles of Association, which are the terms used in the British Virgin Islands for a corporation's charter and bylaws, may be amended by our board of directors without shareholder approval provided that a majority of our independent directors do not vote against the amendment. This includes amendments to increase or reduce our authorized capital stock. Our board's ability to amend our charter documents without shareholder approval could have the effect of delaying, deterring or preventing a change in control of Deswell, including a tender offer to purchase our common shares at a premium over the then current market price.

OUR EXEMPTIONS FROM CERTAIN OF THE REPORTING REQUIREMENTS UNDER THE EXCHANGE ACT LIMITS THE PROTECTIONS AND INFORMATION AFFORDED TO INVESTORS.

We are a foreign private issuer within the meaning of rules promulgated

Edgar Filing: DESWELL INDUSTRIES INC - Form 20-F

under the Securities Exchange Act of 1934. As a foreign private issuer, we are exempt from certain provisions applicable to United States public companies including:

- the rules under the Exchange Act requiring the filing with the Commission of quarterly reports on Form 10-Q or current reports on Form 8-K;
- the sections of the Exchange Act regulating the solicitation of proxies, consents or authorizations in respect to a security registered under the Exchange Act;
- and the sections of the Exchange Act requiring insiders to file public reports of their stock ownership and trading activities and establishing insider liability for profits realized from any "short-swing" trading transaction (i.e., a purchase and sale, or sale and purchase, of the issuer's equity securities within less than six months).

Because of these exemptions, investors are not afforded the same protections or information generally available to investors in public companies organized in the United States.

8

ITEM 4. INFORMATION ON THE COMPANY

HISTORY AND DEVELOPMENT OF DESWELL

The Company was incorporated in December 1993 as a limited liability International Business Company under the laws of the British Virgin Islands. The Company's corporate administrative matters are conducted in the British Virgin Islands through its registered agent, HWR Services Limited, P.O. Box 71, Craigmuir Chambers, Road Town, Tortola, British Virgin Islands. The Company's principal executive offices are located and its business is principally administered in Hong Kong at Unit 516-517, Hong Leong Industrial Complex, No. 4, Wang Kwong Road, Kowloon Bay, Kowloon, Hong Kong, and its telephone number is (852) 2796-6993 and its facsimile number is (852) 2796-7741.

Deswell developed from the initial incorporation of Jetcrown Industrial Limited, a Hong Kong limited liability company ("Jetcrown"), in February 1987. Richard Lau, C. P. Li and C. W. Leung founded Jetcrown to manufacture injection-molded plastic parts for OEMs and contract manufacturers. Jetcrown is the ultimate predecessor of the Company as restructured in March 1994. In January 1990, Jetcrown Industrial (Shenzhen) Limited, a limited liability China foreign operation ("Jetcrown Shenzhen"), was organized to conduct the Company's manufacturing operations in China and Jetcrown's manufacturing operations were relocated to China in 1990. Marcon Enterprises Limited, a British Virgin Islands International Business Company ("Marcon"), was organized in July 1991 to hold the beneficial ownership of Jetcrown Shenzhen and to supervise the latter's manufacturing operations. Richtex Services Limited, a Hong Kong limited liability company, was organized in November 1991 to serve as Marcon's local agent and to discharge Marcon's duties to supervise the manufacturing operations of Jetcrown Shenzhen.

In October 1992, the Company purchased a controlling interest of the outstanding stock of Kwanasia Electronics Company Limited, a Hong Kong limited liability company ("Kwanasia") and an independent contract manufacturer of

Edgar Filing: DESWELL INDUSTRIES INC - Form 20-F

electronic products, components and subassemblies, from two former shareholders. In December 1994, the Company increased its interest in Kwanasia to 51% of the outstanding Kwanasia shares by purchasing the requisite stock from Mr. S. K. Lee and Mr. M. C. Tam, Kwanasia's then remaining two shareholders. Messrs. Lee and Tam still own, in equal shares, 39% of the capital stock of Kwanasia's parent corporation and continue to serve as the executives in charge of administrative and manufacturing operations, respectively, for the Company's contract manufacturing operations for electronic products and subassemblies. See Item 10 Directors and Executive Officers. The total price paid by the Company in 1994 for its majority interest in Kwanasia's shares was approximately \$517,000, which was paid in cash. At the time majority control of Kwanasia was acquired by the Company, Kwanasia had one active operating subsidiary, Bright Ace Limited ("Bright Ace"), a Hong Kong limited liability company. Bright Ace had been inactive since April 2001 and was struck off from the Companies Registry of Hong Kong in October 2002.

Kwanasia originally conducted the Company's contract electronic manufacturing operations through a joint venture enterprise (organized as a limited liability China company) called Shenzhen Kwanam Electronics, Co., Ltd. ("Shenzhen Kwanam"). Shenzhen Kwanam was initially established as a 70%-30% joint venture company pursuant to a Joint Venture Agreement (the "Joint Venture Agreement") between Kwanasia and Commercial Trading Corporation ("CTC"), an independent Chinese party. However, the parties to the Joint Venture Agreement subsequently elected to modify such arrangement. Such modification took various forms but in each case essentially provided that Kwanasia and its successor (through the subsidiaries which held the joint venture interest) would have in substance a 100% economic interest in the joint venture enterprise, subject to a RMB60,000 (approximately \$7,200 at May 30, 1996) annual payment by it to CTC. In May 1996, Kwanasia and CTC agreed that Kwanasia would purchase CTC's 30% interest in Shenzhen Kwanam (the "Buy-out Agreement") for RMB180,000 (approximately \$22,000 at May 30, 1996, the day the purchase price was paid). This transaction was completed during the year ended March 31, 1998 and resulted in Shenzhen Kwanam becoming a wholly owned subsidiary. Following a reorganization in electronic operations and its move into a new manufacturing plant in Dongguan, China, the manufacturing operations of Shenzhen Kwanam were switched to another wholly owned subsidiary, Dongguan Kwan Hong Electronics Co. Ltd. ("Kwan Hong") commencing April 1, 1999. Kwan Hong was initially established as an 85%-15% joint venture company pursuant to a Joint Venture Agreement dated January 31, 1997 between Kwanasia and Dongguan Cheung On Lang Wang Electronics Development Company ("Lang Wang"), an independent Chinese party. Pursuant to a subsequent supplemental agreement signed on February 27, 1997 between

9

Kwanasia and Lang Wang, both parties agreed that Kwanasia would have in substance a 100% economic interest in the joint venture enterprise with Lang Wang guaranteed an annual rental income for the buy out.

The Company's incorporation in the British Virgin Islands in December 1993 was part of a restructuring in which Deswell Industries, Inc. was organized to become the ultimate parent holding company of the companies engaged in actual business operations and to the spin off to Messrs. Lau, Li and Leung other companies that hold real estate in Hong Kong. This restructuring, which was completed in March 1994 involved the following steps. First, on December 13, 1993, the Company (i) allotted a total of 2,539 common shares to provide the initial capital of the Company and (ii) acquired the entire issued share capital of Leesha Holdings Limited, the former ultimate parent company, in exchange for which it issued a total of 3,387,304 common shares. These shares were issued in

Edgar Filing: DESWELL INDUSTRIES INC - Form 20-F

equal portions to Messrs. Lau, Li and Leung, the former shareholders of Leesha Holdings Limited. Second, on March 22, 1994, the Company acquired the entire issued share capitals of Jetcrown, Marcon (including its interest in Jetcrown Shenzhen) and Richtex from Leesha Enterprises Limited, a wholly owned subsidiary of Leesha Holdings Limited and a second-tier holding company, in exchange for which the Company issued an aggregate of 7,618 common shares in equal proportions to Messrs. Lau, Li and Leung. Third, also on March 22, 1994, the Company acquired Leesha Enterprises Limited's 50.00005% interest in Kwanasia in exchange for the issue of 2,539 common shares in the Company in equal proportions to Messrs. Lau, Li and Leung and the assignment of a debt due to Jetcrown of approximately \$465,000 relating to the original purchase of Kwanasia. Finally, on March 22, 1994, the Company made a distribution in specie of the entire share capital of Leesha Holdings Limited to Messrs. Lau, Li and Leung. The immediate effect of this restructuring was that the Company wholly owned Jetcrown, Marcon (which wholly owned Jetcrown Shenzhen) and Richtex and also owned 51% of the outstanding capital stock of Kwanasia (which, in turn, wholly-owned Bright Ace and had a 100% economic interest in Shenzhen Kwanam). Messrs. Lee and Tam owned the balance of Kwanasia. In 1995, this restructuring was fine-tuned for tax purposes, with the Company forming two new corporations, Union International Limited (which changed its name to Integrated International Limited on May 1, 1996) ("Integrated") and Oriental Enterprises Limited (which changed its name to Bright Oriental Enterprises Limited on May 1, 1996) ("Oriental Enterprises"), both corporations organized under the laws of Western Samoa. Integrated issued its shares proportionately to Deswell and Messrs. Lee and Tam in exchange for all outstanding capital stock of Kwanasia respectively held by them, with the result that Integrated is now 51%-owned by Deswell and 49%-owned by Messrs. Lee and Tam. Integrated in turn owns all of the outstanding capital stock of Kwanasia (which, in turn, continues to wholly own Bright Ace). As part of the fine-tuning, Oriental Enterprises was organized as a wholly-owned subsidiary of Integrated and it was assigned Kwanasia's joint venture interest in Shenzhen Kwanam and assumed Kwanasia's rights and responsibilities under the Shenzhen Kwanam joint venture. With the completion during the year ended March 31, 1998 of the purchase of CTC's 30% joint venture interest in Shenzhen Kwanam pursuant to the Buy-out Agreement, Shenzhen Kwanam became a wholly owned subsidiary of Oriental Enterprises.

In October 1996, Integrated acquired a 64.9% interest in Kwanta Precision Metal Products Co., Ltd. ("Kwanta"), a corporation organized under the laws of Hong Kong, for \$64,000, which was paid in cash. In April and July, 1999, Integrated acquired the remaining 35.1% interest in Kwanta for \$6,000, which was paid in cash. Kwanta manufactures metallic molds and accessory parts for use in audio equipment, copying machines and fax machines. Kwanta supplies metallic molds for the Company's plastic and electronic operations and manufactures metal parts for OEMs and contract manufacturers, including the Company.

In January 1999, the Company organized Star Peace Limited, a British Virgin Islands International Business Company, in order to hold securities the Company acquires for investment.

In January, 2000, the Company organized Blue Collar Holdings Limited, a British Virgin Islands International Business Company to hold the beneficial ownership of Jetcrown Industrial (Dongguan) Limited ("Jetcrown Dongguan"). Jetcrown Dongguan, a limited liability China Foreign Enterprise registered in January 2000, was organized to conduct the Company's plastic injection molding manufacturing operations in Dongguan, China. Jetcrown Dongguan commenced production in July 2000.

In April 2000, Integrated organized Digiwave Limited (originally named Wisetop Technology Limited), a limited liability Hong Kong Company, to carry on original design manufacturing, or ODM, in connection with our electronic manufacturing business.

In June 2000, the Company organized Jetcrown Industrial Sdn. Bhd., a limited liability Malaysian Company, to establish a representative office in Dongguan, China to handle our overseas plastic injection product sales. On May 22, 2001, the Company's representative office successfully obtained a registration certificate to allow it to do business from the Chinese Government and it commenced business in August 2001.

In August 2001, the Company organized Jetcrown & Kwanasia (OEM) Specialist Limited ("J&K OEM"), a limited liability Hong Kong Company, to conduct marketing for Deswell's plastic and electronic businesses. The capital stock of J&K OEM is owned 51% by Deswell, 39% by Dickson Lam, Deswell's Director of Marketing for plastic and electronic products, and 10% by two other individuals, who are not otherwise related to Deswell.

CAPITAL EXPENDITURES

Principal capital expenditures and divestitures made by Deswell during the three years in the period ended March 31, 2002 include the following:

	2000 -----	2001 -----	2002 -----
Purchase of property, plant and equipment	\$6,019,000	\$13,926,000	\$4,397,000
Proceeds from the sale of property, plant and equipment	176,000	113,000	\$ 276,000

Principal capital expenditures currently in progress relate to improvements we are constructing on the land we purchased in Dongguan, China to build a new factory. The construction of our new Dongguan factory and dormitories will consist of three to four phases. The pace of its development depends on our financial situation and future operating results. We estimate that we will spend an aggregate of approximately \$12 million for the first phase of construction, which comprised approximately 330,000 square feet of factory space, 70,000 square feet for an amenity center and 80,000 square feet of dormitory space, and which began in October 2001 and is expected to be completed in August 2002. Completion of interior build-out is expected to take another three months, and therefore the new factory built from the Phase I portion of activity is expected to be ready for use by the end of December 2002. Following completion of space built through Phase I, we estimate spending an aggregate of approximately \$4.5 million for the second phase of construction, which will comprise an additional 110,000 square feet of factory space and 70,000 square feet of dormitory space, and which will begin in August 2002 and is expected to take approximately five months. Baring unforeseen delays, we expect that the new factory from the Phase II portion of construction will commence operation in April 2003. Deswell has not yet authorized construction of additional phases of this project and will make those decisions based on its future operating results.

These capital expenditures were financed and are being financed mainly from internally generated funds.

BUSINESS OVERVIEW

INTRODUCTION TO DESWELL

Edgar Filing: DESWELL INDUSTRIES INC - Form 20-F

The Company is an independent manufacturer of injection-molded plastic parts and components, electronic products and subassemblies and metallic molds and accessory parts for original equipment manufacturers, or "OEMs" and contract manufacturers. The Company conducts all of its manufacturing activities at separate plastics, electronics and metallic operation factories located in the People's Republic of China.

The Company produces a wide variety of plastic parts and components that are used in the manufacture of consumer and industrial products, including

- cases and key tops for calculators and personal organizers;
- cases for flashlights, telephones, paging machines, projectors and alarm clocks;
- grips and rods for fishing tackle; and
- toner cartridges and cases for photocopy machines.

Electronic products manufactured by the Company include

- complex printed circuit board assemblies using surface mount ("SMT") and pin-through-hole ("PTH") interconnection technologies and
- finished products which include

11

- > telecommunication products such as special purpose telephones used as a private automated branch exchange, a network terminal and an internet phone, for each of which we also manufacture the plastic parts;
- > telephone answering machines, and
- > sophisticated professional audio equipments such as power amplifiers, mixers and digital signal processors and DVD players.

Since mid 1999, Deswell's electronics research and development team has also developed new products such as full-duplex conference speakerphones, tele-video monitoring systems and digital color cameras.

Metal products manufactured by Deswell include metallic molds and accessory parts used in audio equipment, telephones and copying machines.

As part of its manufacturing operations, the Company consults with its customers in the design of plastic parts and the design and production of the molds used to manufacture plastic parts, which are made by Deswell at its customers' expense, and provides advice and assistance in the design and manufacturing of printed circuit boards. The Company believes that its ability to manufacture high-end plastic and metal parts of the quality required by OEMs and contract manufacturers which furnish products and services internationally, Deswell's expertise in designing and manufacturing molds for its customers and the Company's low production costs distinguish Deswell from most other manufacturers of plastic products and provide it with a competitive advantage.

Edgar Filing: DESWELL INDUSTRIES INC - Form 20-F

However, as a result of increased competition, Deswell has been forced to reduce the sales prices of its products during the years ended March 31, 2000, 2001 and 2002, which has resulted in lower gross profit margins during these years.

INDUSTRY OVERVIEW

Management believes that the injection molding and metal molds and parts manufacturing industries have each benefited in recent years from a trend among major users of injection molded and metal products to outsource an increasing portion of the parts requirements and to select a small number of suppliers or a sole supplier to provide those products. The Company is not aware of any empirical data defining the manufacturing industry in China, however, management believes that injection molding and metal manufacturing firms which are much smaller than the Company make up the largest segment of the industry in China. The Company's experience indicates that such smaller firms are often unable to react quickly and responsively to the diverse demands of many customers and are not capable of furnishing the level of quality that high-end plastic and metal products require. Management believes that this inability on the part of these smaller manufacturers has created opportunities for the Company to increase sales by catering to the outsourcing requirements of OEMs and contract manufacturers that manufacture such high-end products.

Similarly, as a result of the recognition by OEMs in the electronics industry of the rising costs of operating a manufacturing site and the need to add more sophisticated and expensive manufacturing processes and equipment, OEMs have turned increasingly to outside contract manufacturers. By doing so, OEMs are able to focus on research, product conception, design and development, marketing and distribution, and to rely on the production expertise of contract manufacturers. Other benefits to OEMs of using contract manufacturing include: access to manufacturers in regions with low labor and overhead costs, reduced time to market, reduced capital investment, improved inventory management, improved purchasing power and improved product quality. In addition, the use of contract manufacturers has helped OEMs manage production in view of increasingly shorter product life cycles.

OPERATIONS

Plastic Injection Molding

Plastic injection molding manufacturing accounted for 62.9%, 62.2% and 57.0% of the Company's total sales during the years ended March 31, 2000, 2001 and 2002, respectively. At March 31, 2002, the Company conducted its plastic manufacturing operations in approximately 408,500 and 114,900 square feet of factory space in its factories located in Shekou, Shenzhen, China and Dongguan, Shenzhen, China, respectively.

The Company's plastic injection molding process consists of three phases: (1) mold design and production; (2) plastic injection; and (3) finishing.

Mold design and production. The plastic injection-molding process begins when a customer provides the Company with specifications for a product or part, which specifications are often created in consultation with the Company's technical staff. Next the Company designs and produces the mold, using great care in the design process and in the selection of materials to produce the mold in an effort to create a high quality appearance of the completed product by

Edgar Filing: DESWELL INDUSTRIES INC - Form 20-F

reducing or eliminating potential flaws such as the sinkage of materials and irregularities in the knit line of joints.

The mold-making process ranges from 30 to 75 days, depending on the size and complexity of the mold. Mold making requires specialized machines and is capital intensive. At March 31, 2002, the Company used 22 EDMs (electrical discharge machines), 25 CNC (computer numerical control) milling machines and 63 NC (numerical control) milling machines in the mold-making process.

Deswell is continually adding equipment to expand its mold-making and tolling capabilities. In January 1999 the Company purchased two advanced "Makino" tooling machines, a Graphite CNC Milling Machine and a V55-A15 Vertical Machining Center, for approximately \$700,000. These machines can achieve higher efficiency in mold making and are nearly four times faster than normal machines in certain applications. The machines were installed in April 1999. During July to September 1999, the Company purchased 10 sets of NC milling machines, 5 sets of EDM and 2 sets of CNC milling machines for approximately \$510,000. During the period from June to November 2000, the Company purchased six sets of EDM, 14 sets of CNC milling machines and 11 sets of NC milling machines for approximately \$995,000. During February to April 2002, the Company purchased 12 additional injection-molding machines with clamping force of 365 to 550 tons for approximately \$1.5 million. The Company expects that these new injection-molding machines will be installed in July 2002. In March 2002, the Company also upgraded its tooling software used in the mold-making process for enhanced precision and efficiency. Molds produced by the Company generally weigh from 220 to 12,000 pounds and generally cost between \$3,000 and \$500,000.

The customer generally bears the cost of producing the molds and, as is customary in the industry, the customers own them. However, the Company maintains and stores the molds at its factory for use in production and it is the Company's policy not to make molds for customers unless the customer undertakes to store its molds at the Company's factory and uses the Company to manufacture the related parts. In this way, the Company seeks to use its mold-making expertise to create dependence on the Company for the customer's parts requirements.

During the year ended March 31, 2002, the Company made on average about 70 different molds every month. Management believes that the Company's skills and expertise in mold-making, coupled with having its facilities and operations in China, allow the Company to produce molds at costs substantially less than molds of comparable quality made in Japan, Korea and Taiwan.

Plastic Injection. During the mold-making process, suitable plastic resin for the particular product is selected and purchased. See "Raw Materials, Component Parts and Suppliers." The completed mold is mounted onto injection machines, which are classified according to the clamping force (the pressure per square inch required to hold a mold in place during the injection molding process). At March 31, 2002, the Company had 251 injection molding machines, ranging from 50 to 1,600 tons of clamping force, with most machines in the range of from 80 to 100 tons. Each of the Company's machines is capable of servicing a variety of applications and product configurations and the Company has machines, which permit the Company to fabricate plastic parts as small as a button and as large as a 3 ft. x 2 ft. case for a copy machine.

Using separate shifts, injection molding is generally conducted 24 hours a day, seven days per week, other than normal down time for maintenance and changing of product molds. Molding of products requiring extra concerns for appearance, such as cases for calculators, personal organizers and telephones are conducted in an isolated and dust free section of the factory. In a continuous effort to assure quality, the Company's quality control personnel inspect the products produced from each machine generally at hourly intervals during production. When defects are discovered, the Company's maintenance

Edgar Filing: DESWELL INDUSTRIES INC - Form 20-F

personnel inspect the mold and the machine to determine which is responsible. If the mold is the cause of the defect, it will be immediately removed from the machine and serviced or repaired by one of a team of technicians employed to maintain molds. The mold will then be remounted on the machine and production will continue. If the machine is the source of the defect, the Company's technicians and engineers service the machine immediately. Through this continuous vigilance to molds and machines, the

13

Company has experienced what it believes to be a relatively low scrap rate and has been able to maintain a high level of productivity of its injection molding machines.

Finishing. After injection molding, products are finished. Finishing consists of smoothing and polishing, imprinting letters, numbers and signs through silk screening process, pad printing or epoxy ultra violet cutting, and treating the product with an anti-fog coating for a lasting and attractive appearance. Most of these functions are conducted by hand.

Electronic Products and Assemblies

In an aggregate of approximately 298,000 square feet of factory space at March 31, 2002 located at facilities in Dongguan, China, the Company manufactures and assembles electronic products and electronic assemblies for OEMs. Finished products include consumer and sophisticated studio-quality audio equipment, telephones and telephone answering machines, computer peripherals such as local area network ("LAN") add-in cards, CD-ROM drives and sound cards, electronic toys, infrared remote controls and radar detectors. Assemblies consist of PCBs with passive (e.g., resistors, capacitors, transformers, switches and wire) and active (e.g., semiconductors and memory chips) components mounted on them. During the years ended March 31, 2000, 2001 and 2002, manufacturing of electronic products accounted for approximately 30.6%, 35.4% and 40.4%, respectively, of the Company's total sales. During the same periods, manufacturing of finished products accounted for 95%, 91% and 96%, respectively, of electronic product sales and assembling of printed circuit boards accounted for the balance of such sales during those periods.

In assembling printed circuit boards the Company purchases packaged boards with the active components already mounted and use both PTH and SMT interconnection technologies to assemble the other components onto the PCBs.

PTH is a method of assembling printed circuit boards in which component leads are inserted and soldered into plated holes in the board. While this technology is several decades old and is labor intensive, it still has a significant market, particularly for consumer product applications.

SMT is the method of assembling printed circuit boards in which components are fixed directly to the surface of the board, rather than being inserted into holes. With this process, solder is accurately stenciled in paste form on pads located on the printed circuit board. The components are then placed into the solder paste and heated to the point of melting the paste (a process called "reflow") to establish a strong solder joint. The SMT process allows for more miniaturization, cost savings and shorter lead paths between components (which results in greater signal speed). Additionally, it allows components to be placed on both sides of the printed circuit board, a major factor in the miniaturization process.

Edgar Filing: DESWELL INDUSTRIES INC - Form 20-F

Manufacturing operations include PCB assembly and testing and, in those cases where finished products are to be provided, assembly into final product housing. While the Company has automated various aspects of the many processes, the assembly of components into electronic products remains a labor-intensive process generally requiring a high degree of precision and dexterity in the assembly stage and multiple quality control checks prior to shipment. The Company utilizes specially designed equipment and techniques to maintain its ability to assemble efficiently a wide variety of electronic products and assemblies.

Metal Parts Manufacturing

In an aggregate of approximately 120,100 square feet of factory space at March 31, 2002 located at facilities in Dongguan, China near to the facilities the Company uses to manufacture and assemble electronic products and electronic assemblies, the Company manufactures metallic molds and accessory parts for use in audio equipment, telephone and copying machines. The manufacturing by the Company of metal mold products accounted for approximately 6.5%, 2.4% and 2.6% of the Company's total sales during the years ended March 31, 2000, 2001 and 2002, respectively.

14

Quality Control

The Company maintains strict quality control procedures for its products. At hourly intervals, the Company's quality control personnel monitor machines and molds to assure that plastic parts are free from defects.

For electronic operations, the Company's quality control personnel check all incoming components. Moreover, during the production stage, the Company's quality control personnel check all work in process at several points in the production process. Finally, after the assembly stage, the Company randomly checks finished products.

Plastic, electronic and metal products manufactured and assembled at the Company's facilities have a low level of product defects, and aggregate returns represented less than 3% of total net sales during each of the years ended March 31, 2000, 2001 and 2002. In 1995, the Company earned ISO 9002 certifications for both its plastic and electronic products manufacturing operations. In April 2000, the Company also received ISO 9002 for its metal manufacturing operation. The "ISO" or International Organization for Standardization is a Geneva-based organization dedicated to the development of worldwide standards for quality management guidelines and quality assurance. ISO 9000, which is the first quality system standard to gain worldwide recognition, requires a company to gather, analyze, document and monitor and to make improvements where needed. ISO 9002 is the ISO level appropriate for manufacturers like the Company. The Company's receipt of ISO 9002 certification demonstrates that the Company's manufacturing operations meet the established world standards.

Raw Materials, Component Parts and Suppliers

Plastic Resins. The primary raw materials used by the Company in the manufacture of its plastic parts are various plastic resins, primarily ABS (acrylonitrile-butadiene-styrene), which in the years ended March 31, 2000, 2001 and 2002 averaged approximately 55%, 58% and 52%, respectively, of the Company's cost of plastic products sold and 31%, 32% and 25%, respectively, of the Company's total cost of goods sold. Because plastic resins are commodity

Edgar Filing: DESWELL INDUSTRIES INC - Form 20-F

products, the Company selects its suppliers primarily based on price. The Company has no long-term supply agreements for plastic resins. The Company currently obtains its plastic resins from suppliers in Hong Kong, Japan and Taiwan and normally maintains a three to four month inventory supply.

The Company used in excess of 17,200,000 pounds of plastic resins during the year ended March 31, 2002. Management believes that the Company's large volume purchases of plastic resin have generally resulted in lower unit raw material costs and generally has enabled the Company to obtain adequate shipments of raw materials. While the Company is not generally bound by fixed price contracts with its customers, the Company has found that increases in resin prices can be difficult to pass on to its customers and, as a consequence, a significant increase in resin prices could have, and in the past has had, a material adverse effect on the Company's operations.

The primary plastic resins used by the Company are produced from petrochemical intermediates derived from products of the natural gas and crude oil refining processes. Natural gas and crude oil markets have in the past experienced substantially cyclical price fluctuations as well as other market disturbances including shortages of supply and crises in the oil producing regions of the world. The capacity, supply and demand for plastic resins and the petrochemical intermediates from which they are produced are also subject to cyclical and other market factors. Consequently, plastic resin prices may fluctuate as a result of natural gas and crude oil prices and the capacity, supply and demand for resin and petrochemical intermediates from which they are produced.

Although the plastics industry has from time to time experienced shortages of plastic resins, the Company has not experienced to date any such shortages. Management believes that there are adequate sources available to meet the Company's raw material needs.

Component Parts and Supplies. The Company purchases over 500 different component parts from more than 100 suppliers and is not dependent upon any single supplier for any essential component. The Company purchases from suppliers in Japan, Taiwan, Korea, Hong Kong and elsewhere. At various times there have been shortages of parts in the electronics industry, and certain components, including PCBs and semiconductors, have been subject to limited allocations. Although shortages of parts and allocations have not had a material adverse effect on the Company's results of operations, there can be no assurance that any future shortages or allocations would not have such an effect.

15

Raw Metal. The primary materials used by the Company in metal molds and parts manufacturing are various metals, but purchases of raw metal were immaterial to the Company's total operations during the years ended March 31, 2000, 2001 and 2002. Typically the Company buys metals from a variety of suppliers in Hong Kong and China and has no long-term contracts with metal suppliers.

Transportation

Transportation of components and finished products to customers in Shenzhen and to and from Hong Kong and Shenzhen and Dongguan is by truck. Generally, the Company sells its products F.O.B. China or F.O.B. Hong Kong. To date, the Company has not been materially affected by any transportation problems and has found that the transition of Hong Kong to Chinese control in

Edgar Filing: DESWELL INDUSTRIES INC - Form 20-F

July 1997 has not had an adverse impact on the Company's ability to transport goods to and from Hong Kong and China.

Customers and Marketing

The Company's customers are OEMs and contract manufacturers. The Company sells its products in Asia (Hong Kong, Japan and China), North America (the United States and Canada) and Europe (Germany, United Kingdom, France and Italy). Net sales to customers by geographic area are determined by reference to shipping destinations as directed by the Company's customers. For example, if the products are delivered to the customer in Hong Kong, the sales are recorded as generated in Hong Kong; if the customer directs the Company to ship its products to Europe, the sales are recorded as sold to Europe. See Note 14 of Notes to Consolidated Financial Statements for the dollar amounts of export sales by geographic area for each of the years ended March 31, 2000, 2001 and 2002. Net sales as a percentage of total sales to customers by geographic area consisted of the following for the years ended March 31, 2000, 2001 and 2002:

GEOGRAPHIC AREAS	2000	2001	2002
-----	-----	-----	-----
China	42.6%	54.5%	56.3%
North America ..	27.0	22.6	23.2
Hong Kong	24.1	19.2	14.0
Europe	5.1	2.2	4.9
Others	1.2	1.5	1.6
	-----	-----	-----
Total ..	100.0%	100.0%	100.0%
	=====	=====	=====

The Company markets its products and services to existing customers through direct contact with the Company's management and direct sales personnel. The Company's sales personnel attend trade shows, advertise in trade publications such as Asian Source -- Electronics and Asian Source --Components, and use direct mail catalogues and product literature. The Company's Hong Kong-based marketing staff contacts existing and potential customers by telephone, mail, fax, e-mail via the Internet and in person.

Major Customers

The table below sets forth each of the Company's customers which accounted for 10% or more of net sales during the year ended March 31, 2002 the products purchased and the percentage of total Company net sales accounted for by such customers during the years ended March 31, 2000, 2001 and 2002.

CUSTOMER	PRODUCT	YEAR ENDED MARCH	
		2000	2001
-----	-----	-----	-----
Epson Precision (H.K.) Limited	Plastic components	*	13.0%
VTech Telecommunications Limited	Telephones and organizers	22.1%	17.6%
Kyocera Mita Industrial Co. (H.K.) Limited	Plastic components and assembly	24.0%	18.7%
Inter-Tel Incorporated	Telephones	25.3%	20.0%

* Less than 10%.

16

The Company's success will depend to a significant extent on the success achieved by its customers in developing and marketing their products, some of which may be new. Many of the industry segments served by the Company's customers are subject to technological change, which can result in short product life cycles. The Company could be materially adversely affected if advances in technology or other factors reduce the marketability of essential products of its customers or if new products being developed by its customers do not attain desired levels of acceptance. If the Company was to lose any customers who account for a material portion of total net sales, or if any of these customers were to decrease substantially their purchases from the Company, the Company's revenues, earnings and financial position would be materially and adversely affected. The Company's dependence on these customers is expected to continue in the foreseeable future.

The Company's sales transactions with all of its customers are based on purchase orders received by the Company from time to time. Except for these purchase orders, the Company has no written agreements with its customers. Sales of plastic parts and metallic products are primarily made on credit terms, with payment in Hong Kong dollars expected within 30 to 60 days of shipment. Sales of electronic products are typically based on letters of credit and are payable in United States dollars. To date the Company has not experienced any significant difficulty in collecting accounts receivable on credit sales. Management communicates regularly with credit sale customers and closely monitors the status of payment and in this way believes it has kept the default rate low. Additionally, plastic parts deliveries are made in several installments over a lengthy period of time, which permits the Company to withhold delivery in the event of any delinquency in payment for past shipments. While the Company has not experienced any difficulty in being paid by its major customers, there can be no assurance that the Company's favorable collection experience will continue in every case or at all. The Company could be adversely affected if a major customer were unable to pay for the Company's products or services.

Competition

Management believes that the plastic injection molding, contract electronic manufacturing and metal molds and accessories industries are each highly fragmented, although it is not aware of any empirical data defining the business segments in China. Plastic injection molding and metal molds and accessories manufacturing are characterized by a large number of relatively small operators and divisions of larger companies and contract electronic manufacturing by numerous independent manufacturers whose capabilities are evaluated by customers against each other and against the merits of in-house production. Competition in each industry is intense and many competitors in each industry are larger and have greater financial and other resources than the Company.

The Company believes that competition for plastic injection molding, contract electronic manufacturing and metal molds and parts manufacturing businesses are based on price, quality, service and the ability to deliver products in a timely and reliable basis. The Company believes that it competes favorably in each of these areas in each business segment.

Patents, Licenses and Trademarks

Edgar Filing: DESWELL INDUSTRIES INC - Form 20-F

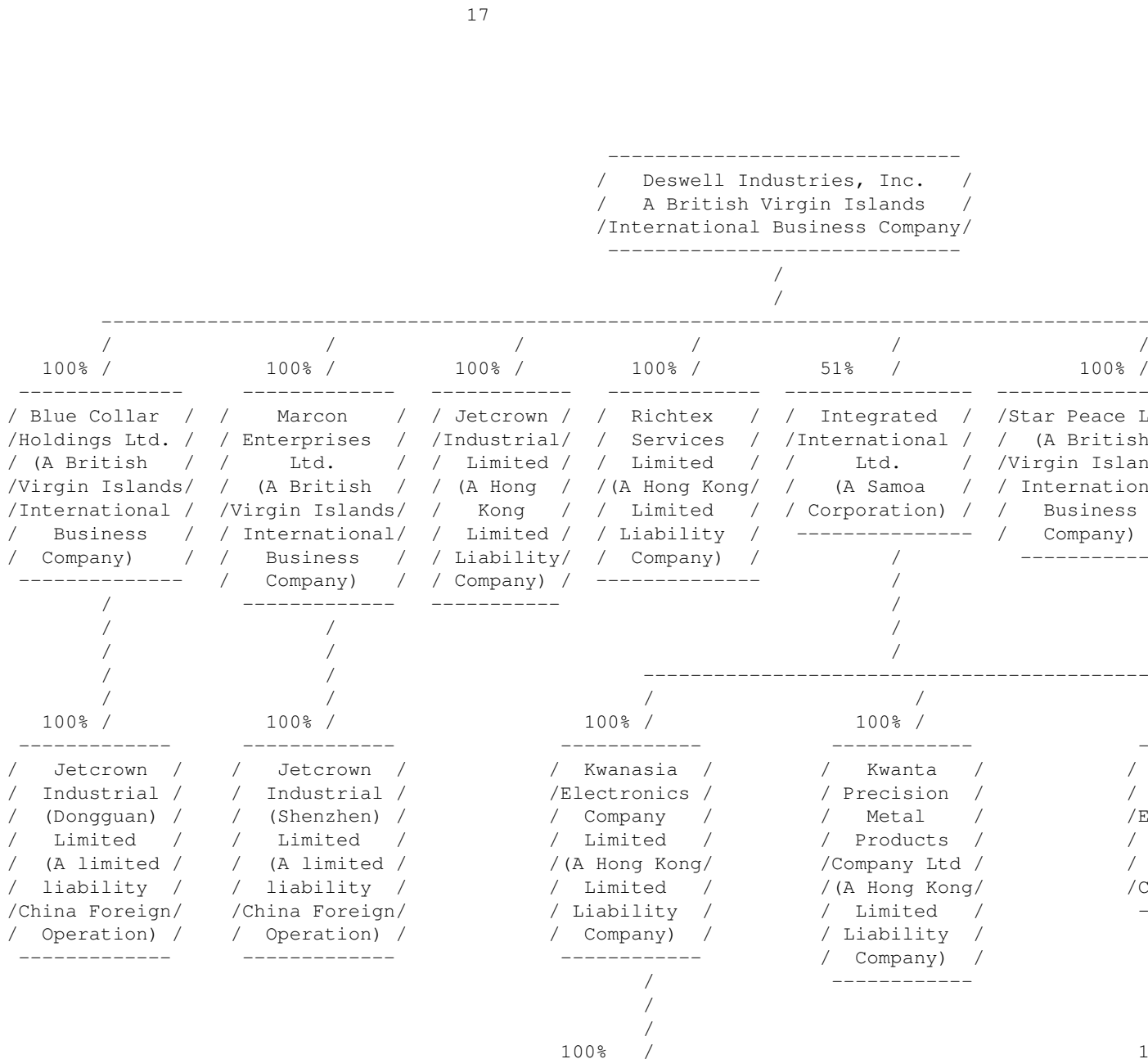
The Company has no patents, trademarks, licenses, franchises, concessions or royalty agreements that are material to its business.

SEASONALITY

For information concerning the seasonality of the Company's business, see "Seasonality" included under Item 5 "Operating and Financial Review and Prospects."

ORGANIZATIONAL STRUCTURE

The chart below illustrates the organizational structure of the Company and its active subsidiaries at March 31, 2002.



/ Dongguan Kwan /
/ Hong Electronics /
/ Co. Ltd. /
/(A limited liability/
/ China Foreign /
/ Operation) /

/ S
/
/ C
/(A
/
/
/

PROPERTY, PLANTS AND EQUIPMENT

HONG KONG

The Company owns Unit 516-517, Hong Leong Industrial Complex, No. 4 Wang Kwong Road, Kowloon Bay, Kowloon, Hong Kong and uses these premises for the administration and marketing offices of its plastic injection molding operations. In addition, the Company leases from unaffiliated parties Units 514, 515 and 602, Hong Leong Industrial Complex, No. 4 Wang Kwong Road, Kowloon Bay, Kowloon, Hong Kong for use as an office and warehouse for its plastic injection molding operations. The total monthly rent under the leases is approximately \$3,200. These leases expire from July 2002 to February 2004.

The Company owns Unit 10-14, 19/F., Kwong Sang Hong Centre, 151-153 Hoi Bun Road, Kwun Tong, Hong Kong and uses this space for the administration and marketing offices for both its contract electronic and metal manufacturing operations.

Moreover, the Company leases from an unaffiliated party Unit 1201, 12/F., Prosperity Center, 25 Chong Yip Street, Kwun Tong, Hong Kong for use as an office for its marketing operations. The total monthly rent under the lease is approximately \$1,500. The lease expires in August 2003.

18

SOUTHERN CHINA

In October 2000, the Company has acquired under sale and purchase agreement with third party an aggregate of approximately 112,900 square feet of manufacturing space at Block G, Wing Village Industrial Estate, Shekou, Shenzhen, China which were previously leased by the Company for the use of its plastic injection molding operations. Deswell paid approximately \$1,461,000 to acquire this property.

At March 31, 2002, the Company leased approximately 295,600 square feet of manufacturing space at Block A, 1/F-2/F, Block B, 1/F-3/F, Block C, 1/F, Block D, 1/F-5/F, Block E, 2/F-5/F, Block F, 1/F-5/F, and Block H, G/F and 2/F-5/F Wing Village Industrial Estate, Shekou, Shenzhen, China which are used for its plastic injection molding operations. These factory premises are leased from the local Chinese government and third parties under separate leases expiring from September 2002 to May 2007. The aggregate monthly rent is approximately \$63,200.

In January 2000, the Company also leased approximately 56,800 square

Edgar Filing: DESWELL INDUSTRIES INC - Form 20-F

feet of manufacturing space and 37,100 square feet of ancillary dormitory space at Huangguan Industrial Estate, Houjie Town, Dongguan, Shenzhen, China, which are used for its plastic injection molding operations. Additionally, in May and August 2000, the Company leased approximately 58,100 square feet of manufacturing space and 22,400 square feet of ancillary dormitory space at Huangguan Industrial Estate, Houjie Town, Dongguan, Shenzhen, China, which are used for its plastic injection molding operations. The new premises are adjacent to the factory leased in January 2000. These premises are leased from the local Chinese government and third party under separate leases expiring from February 2002 to July 2004. The aggregate monthly rental is approximately \$16,600.

The Company leases space at various locations near its plastics manufacturing factories in Shekou and Dongguan, Shenzhen that it uses as dormitories for factory workers. Management estimates that the space leased for dormitories approximated 97,200 square feet and 30,600 square feet at March 31, 2002 in Shekou and Dongguan, respectively. The facilities are leased for periods of one year to two years, expiring from August 2002 to March 2003. The aggregate monthly rental is approximately \$21,300. The Company has acquired under purchase and sale agreements with third parties an aggregate of approximately 24,600 square feet of additional space at various locations near its plastics manufacturing operations in Shenzhen, which are also used as dormitories for factory workers.

At March 31, 2002, the Company leased approximately

- 264,200 square feet of manufacturing space at Kwan Hong Building, Cheung On, Dongguan, China,
- 1,000 square feet of office space in Yee Ho Plaza, Nanshan, Shenzhen, China,
- 22,200 square feet of ancillary dormitory space at Lan Wang Building, Cheung On, Dongguan, China, and
- 1,800 square feet of office space in Intelligent Transport Research & Development Centre, Hangzhou, China

for its contract electronic manufacturing operations;

- 84,500 square feet of manufacturing and warehouse space in Lan Wang Building, Cheung On, Dongguan, China and
- 133,300 square feet of ancillary dormitory space at Kwan Hong Building

for both its contract electronic manufacturing and metal manufacturing operations; and

- 69,400 square feet of manufacturing space in Kwanta Building, Cheung On, Dongguan, China, and
- 44,700 square feet of ancillary dormitory space at Lan Wang Building

for its contract metal manufacturing operation. These premises are leased from third parties under separate leases expiring from February 2003 to May 2009. The aggregate monthly rental is approximately \$75,100.

In addition, the Company leases approximately 133,500 square feet of space at various locations near its contract electronics and metal manufacturing factories in Dongguan, Shenzhen, which are used as staff quarters. The facilities are leased from third parties for periods of one to two years and

Edgar Filing: DESWELL INDUSTRIES INC - Form 20-F

expire from December 2002 to May 2004. The aggregate monthly rental is approximately \$6,500.

19

The Company leases approximately 1,900 square feet of space from S. K. Lee and M.C. Tam near its office in Shenzhen that is used as staff quarters. Messrs. Lee and Tam are executive officers of the Company in charge of its contract manufacturing operations. These premises are leased for terms expiring from March 2002 to September 2003. The total monthly rental is approximately \$970.

Management believes that Deswell will be able to renew each of the leases described above as it expires for periods comparable to the current term.

The Company believes that its existing offices and manufacturing space, together with manufacturing space in close proximity to its existing facilities which management believes will be available as needed for limited expansion, will be adequate for the operation of its business for at least the next two years.

ITEM 5. OPERATING AND FINANCIAL REVIEW AND PROSPECTS

Except for statements of historical facts, this section contains forward-looking statements involving risks and uncertainties. You can identify these statements by forward looking words including "expect", "anticipate", "believe" "seek", "estimate". Forward looking statements are not guarantees of Deswell's future performance or results and the Company's actual results could differ materially from those anticipated in these forward-looking statements as a result of certain factors, including those set forth under the section of this Report entitled Item 3. Key Information -- "Risk Factors". This section should be read in conjunction with the Company's Consolidated Financial Statements included under Item 18 of this Report.

OPERATING RESULTS

The following discussion should be read in conjunction with the consolidated financial statements and notes thereto included later in this Report. The Company prepares its financial statements in accordance with U.S. GAAP.

GENERAL

The Company's revenues are derived from the manufacture and sale of injection-molded plastic parts and components, electrical products and subassemblies and metallic molds and accessories. Jetcrown (a wholly owned subsidiary) carries on the plastics operations whereas Integrated (a 51%-owned consolidated subsidiary) carries out the electronics operations. The Company acquired a controlling interest in Integrated's predecessor in October 1992 and has included the results of the predecessor in its consolidated financial statements from the date of acquisition. Integrated acquired a 64.9% interest in Kwanta in October 1996 and the Company has included the results of Kwanta in its consolidated financial statements since the date of acquisition. In April and July 1999, Integrated acquired the remaining 35.1% interest in Kwanta.

The Company's plastics operations are the mainstay of its business and have accounted for the majority of its sales. The Company carries out all of its manufacturing operations in Southern China, where it is able to take advantage

Edgar Filing: DESWELL INDUSTRIES INC - Form 20-F

of the lower overhead costs and inexpensive labor rates as compared to Hong Kong. At the same time, the proximity of the Company's factories in Southern China to Hong Kong permits the Company to manage easily its manufacturing operations from Hong Kong, facilitates transportation of its products through Hong Kong and provides the Company's plastic manufacturing operations with access to electricity from Hong Kong and to nearby water, both of which resources are needed in abundance to manufacture plastic parts and are often inadequate elsewhere in China.

The Company's earnings have benefited from favorable overall effective income tax rates of 7.7%, 2.3% and 3.6% for the years ended March 31, 2000, 2001 and 2002, respectively. The Company is subject to Hong Kong income tax on its income arising in, or derived from, Hong Kong. Currently, under the Chinese tax system we can obtain tax breaks by reinvesting profits of certain of our subsidiaries in China. We are considering the reinvestment of a portion of our profits of \$4,000,000, from our Chinese plastic manufacturing subsidiary for the year ended December 31, 2001 and, if we do so, we expect we will only be subject to taxes of 7.5% on these operations for the remaining profits for tax year ended December 31, 2001. For the tax year commencing January 1, 2002, the Company will be subject to taxes of 10% on these operations. Certain of the Company's income accrue in tax-free jurisdictions and are not subject to any income taxes. See Note 7 of Notes to consolidated financial statements for a further description of income taxes. The Company expects to continue to benefit from a low overall effective

20

income tax rate in the future, barring unforeseen changes in tax laws and regulations in the various jurisdictions in which it operates. See "Uncertain applications of Chinese tax laws could subject us to greater taxes in China" included under "We face numerous risks as a result of our operations in China and Hong Kong" in Item 3. Key Information -- "Risk Factors."

The following table sets forth the percentages of net sales of certain income and expense items of the Company for each of the three years in the period ended March 31, 2002.

	YEAR ENDED MARCH 31,		
	2000	2001	2002
Net sales	100.0%	100.0%	100.0%
Cost of sales	62.8	65.1	65.3
Gross profit	37.2	34.9	34.7
Selling, general and administrative expenses	19.6	19.0	18.0
Operating income	17.6	15.9	16.7
Interest expense	0.0	0.0	0.0
Other income, net	1.5	1.1	1.0
Income before income taxes	19.1	17.0	17.7
Income taxes	1.5	0.4	0.6
Income before minority interests	17.6	16.6	17.1

Edgar Filing: DESWELL INDUSTRIES INC - Form 20-F

Minority interests	0.7	0.8	1.1
	-----	-----	-----
Net income	16.9%	15.8%	16.0%
	=====	=====	=====

YEAR ENDED MARCH 31, 2002 COMPARED TO YEAR ENDED MARCH 31, 2001

The Company's net sales for the year ended March 31, 2002, were \$83,320,000, an increase of \$2,473,000 or 3.1% as compared to year ended March 31, 2001. Sales to Inter-Tel Incorporated ("Inter-Tel"), Kyocera Mita Industrial Co. (H.K.) Ltd. ("Mita"), VTech Telecommunications Ltd. ("VTech") and Epson Precision (H.K.) Ltd. ("Epson"), the Company's four largest customers during the year ended March 31, 2002, represented approximately 58.0% of the net sales for the year. See Item 4. "Information on the Company -- Major Customers".

The increase in sales during the year ended March 31, 2002 was mainly related to increases in sales of electronic and metallic products of \$4,311,000 offset by a decrease in sales of injection-molded plastic products of \$1,838,000. This represented an increase of 13.7% and a decrease of 3.7%, respectively, as compared with the net sales during the year ended March 31, 2001. The increase in net sales in the electronics and metallic divisions was mainly due to an increase in orders from existing customers of these divisions, together with orders from new customers during the year.

Net sales to customers by geographic area are determined by reference to shipping destinations as directed by the Company's customers. During the year ended March 31, 2002, sales to China, North America, Europe and other areas increased by \$2,797,000, \$1,093,000, \$2,291,000 and \$599,000, respectively, and sales to Hong Kong and Japan decreased by \$3,867,000 and \$440,000, respectively, over levels for the year ended March 31, 2001.

The overall gross profit for the year ended March 31, 2002 was \$28,872,000, representing a gross profit margin of 34.7%. This compares with the overall gross profit and gross profit margin of \$28,251,000 and 34.9%, respectively, for the year ended March 31, 2001. The absolute and percentage decrease in the overall gross profit margin was 0.2% and 0.6%, respectively, for years ended March 31, 2002 and 2001.

Selling, general and administrative expenses for the year ended March 31, 2002 were \$14,939,000, amounting to 18.0% of total net sales, as compared to \$15,414,000 or 19.0% of total net sales for the year ended March 31, 2001. The decrease in selling, general and administrative expenses of \$475,000 over the prior year was mainly attributed to the stricter control on these expenses.

As a result of the increase in sales revenue and a decrease in selling, general and administrative expenses, operating income was \$13,933,000 for the year ended March 31, 2002, an increase of \$1,096,000 or 8.5% as compared with the year ended March 31, 2001.

During the year ended March 31, 2002, the Company established a 51%-owned marketing subsidiary to strengthen its marketing capability. As a result, minority interests represent the 49% minority interest in the electronics and metallic subsidiaries and the marketing subsidiary. The increase in minority interest to \$925,000 for the year ended March 31, 2002, from \$621,000 for the year ended March 31, 2001, reflects the fact that the

Edgar Filing: DESWELL INDUSTRIES INC - Form 20-F

electronics and metallic businesses generated more net income in the year ended March 31, 2002 as compared to the prior year.

As a result of the above factors, net income was \$13,324,000 for the year ended March 31, 2002, an increase of \$514,000 or 4.0%, as compared to the year ended March 31, 2001, and net income as a percentage of net sales increased slightly to 16.0% from 15.8%.

YEAR ENDED MARCH 31, 2001 COMPARED TO YEAR ENDED MARCH 31, 2000

The Company's net sales for the year ended March 31, 2001 were \$80,847,000, an increase of \$19,889,000 or 32.6% as compared to year ended March 31, 2000. Sales to Inter-Tel, Mita, VTech and Epson, the Company's four largest customers during the year ended March 31, 2001, represented approximately 69.3% of the net sales for the year. See Item 4. "Information on the Company -- Major Customers".

The increase in sales was mainly related to increases in sales of injection-molded plastic products and electronic and metallic products of \$10,996,000 and \$8,893,000, respectively. This represented increases of 28.7% and 39.3%, respectively, as compared with comparable net sales in the prior year. The increase in net sales in both operations was attributed to the substantial increase in orders from the existing strong customer base together with orders from new customers.

Net sales to customers by geographic area are determined by reference to shipping destinations as directed by the Company's customers. During the year ended March 31, 2001, sales to China, North America, Hong Kong, Japan and other areas increased by \$18,120,000, \$1,795,000, \$852,000, \$14,000 and \$400,000, respectively, and sales to Europe decreased by \$1,293,000, over fiscal 2000 levels.

The overall gross profit for the year ended March 31, 2001 was \$28,251,000, representing a gross profit margin of 34.9%. This compares with the overall gross profit and gross profit margin of \$22,696,000 or 37.2% for the year ended March 31, 2000. The absolute and percentage decrease in the overall gross profit margin of 2.3% and 6.2%, respectively, was mainly attributable to the combined effect of an increase in resin costs and an increase in electronics component costs in the plastic and electronic divisions.

Selling, general and administrative expenses for the year ended March 31, 2001 were \$15,414,000, amounting to 19.0% of total net sales, as compared to \$11,970,000 or 19.6% of total net sales for the year ended March 31, 2000. The decline in selling, general and administrative expenses as a percentage of sales over the prior year was the result of spreading such expenses over increased sales during fiscal 2001.

As a result, operating income was \$12,837,000 for the year ended March 31, 2001, an increase of \$2,111,000 or 19.7% as compared with the prior year.

The minority interests represent the 49% minority interest in both the electronics and metallic subsidiaries. The increase in minority interest to \$621,000 for the year ended March 31, 2001 from \$433,000 for the year ended March 31, 2000 reflects the fact that the electronic and metallic businesses generated more profits in fiscal 2001 than fiscal 2000.

As a result of the above factors, net income was \$12,810,000 for the year ended March 31, 2001, an increase of \$2,512,000 or 24.4%, as compared to the year ended March 31, 2000 and net income as a percentage of net sales decreased to 15.8% from 16.9%.

SEASONALITY

Edgar Filing: DESWELL INDUSTRIES INC - Form 20-F

The following table sets forth certain unaudited quarterly financial information for the twelve quarters in the three-year period ended March 31, 2002 (in thousands):

22

	YEAR ENDED MARCH 31,									
	2000					2001				
	Q1	Q2	Q3	Q4	Q1	Q2	Q3	Q4	Q1	
Net sales	\$12,081	\$16,110	\$17,809	\$14,958	\$17,786	\$24,809	\$21,376	\$16,876	\$21,884	
Gross profit	4,592	6,727	6,255	5,122	6,255	9,155	7,619	5,222	7,523	
Operating income	1,925	3,450	3,201	2,150	2,820	5,071	3,337	1,609	3,956	
Net income	2,113	3,336	2,944	1,905	2,757	4,011	3,589	2,453	3,369	

The first calendar quarter (the fourth quarter of the fiscal year) is typically the Company's slowest sales period because, as is customary in China, the Company's manufacturing facilities in China are closed for two weeks for the Chinese New Year holidays. The Company does not experience any other significant seasonal fluctuations.

IMPACT OF INFLATION

The Company believes that inflation has not had a material effect on its business. Although the Company has found it difficult to increase the prices of its products in order to keep pace with inflation, particularly in its plastics operations, the Company believes that the location of its manufacturing operations in Southern China has resulted in a lower cost base which still provides it with a competitive advantage. Accordingly, the Company is reliant upon increasing its transaction volume in order to compensate for the effects of inflation.

EXCHANGE RATES

The Company sells most of its products and pays for most components in either Hong Kong dollars or U.S. dollars. Exchange rate fluctuations have not had a significant impact on the Company's operating results. Labor cost and overhead expenses of the Company's Hong Kong operations and China factories are paid in Hong Kong dollars and renminbi, respectively. The exchange rate of the Hong Kong dollar to the U.S. dollar has been fixed by the Hong Kong government since 1983 at approximately HK\$7.80 to US\$1.00 and accordingly has not represented a currency exchange risk to the U.S. dollars. The Chinese government has announced its intention to maintain this fixed exchange rate, but despite such assurances there has been uncertainty reported in this regard. There can be no assurance that the Chinese government will continue to maintain the present currency exchange mechanism and the Company could face increased currency risks if the current exchange rate mechanism is changed. If the currency exchange mechanism between the Hong Kong dollar and the U.S. dollar is changed, the Company's results of operations and financial condition could be materially adversely affected.

Edgar Filing: DESWELL INDUSTRIES INC - Form 20-F

In 1994, China adopted a floating currency system whereby the official exchange rate is equal to the market rate. Since the market and official Yuan rates were unified, the value of the Yuan against the dollar has been essentially stable, with an average rate of 8.28 Yuan per \$1.00 during Deswell's fiscal years ended March 31, 2000, 2001 and 2002. The Company believes, because its Chinese operations presently are confined to manufacturing products for export or for customers in China that are controlled by foreign investors and which pay the Company in Hong Kong dollars, that the current economic climate in China should not have a direct adverse impact on the Company's business.

The Company did not hedge its currency risk during the years ended March 31, 2000, 2001 or 2002 and at March 31, 2002, the Company had no open forward currency contracts. The Company continues to review its hedging strategy and there can be no assurance that hedging techniques implemented by the Company will be successful or will not result in charges to the Company's results of operations.

LIQUIDITY AND CAPITAL RESOURCES

For the year ended March 31, 2002, net cash generated from operations totaled \$18,203,000, including net income of \$13,324,000 and depreciation and amortization of \$4,918,000. Accounts receivable and inventories increased by \$1,111,000 and \$1,191,000, respectively, over levels at March 31, 2001, primarily as a result of increases in sales and the general increase in business activities. Accounts payable increased by \$3,309,000 over the March 31, 2001 level. For the year ended March 31, 2001, net cash generated from operations totaled \$13,810,000, including net income of \$12,810,000 and depreciation and amortization of \$5,039,000. Accounts receivable and inventories increased by \$5,170,000 and \$1,102,000, respectively, over levels at March 31, 2000, primarily as a

23

result of increases in sales and the general increase in business activities. Accounts payable decreased by \$1,127,000 over the March 31, 2000 level.

In February 2001, Messrs. Richard Lau, C.P. Li and C.W. Leung, the Company's senior executive officers, members of its board and principal shareholders exercised options for a total 240,000 common shares of the Company. Proceeds to Deswell totaled \$2,588,000. Other employees exercised options for a total of 10,000 common shares of the Company in September 2000 with proceeds to Deswell of \$158,000. In June 2002, Messrs. Lau and Leung exercised options totaling 45,000 common shares of the Company. Proceeds to Deswell from these option exercises totaled \$700,000.

Net cash used in investing activities amounted to \$4,994,000 and \$13,672,000 for the years ended March 31, 2002 and 2001, respectively. Capital expenditures during these periods totaled \$4,397,000 and \$13,926,000, respectively, and were financed by cash generated from operations during each year. The capital expenditure primarily related to the acquisition of plant and machinery for the Company's production facilities in China and office equipment for the Company's administrative operations in China. Cash of \$936,000 was pledged as security for the short-term borrowing facilities and \$63,000 was released as deposit for customs duty in Dongguan, China during the year ended March 31, 2002.

Net cash used in financing activities for the years ended March 31, 2002 and 2001 was \$7,005,000 and \$1,964,000, respectively. Net cash used in financing

Edgar Filing: DESWELL INDUSTRIES INC - Form 20-F

activities during the year ended March 31, 2002 was primarily to fund the Company's dividend payments to its shareholders and to repurchase 34,100 common shares of the Company of \$564,000 netting off the short-term bank borrowings of \$482,000, the proceeds of \$243,000 from the exercise of stock options from employees and \$63,000 contribution from minority shareholders of a subsidiary. Net cash used in financing activities during the year ended March 31, 2001 was primarily to fund the Company's dividend payments to its shareholders netting off the proceeds of \$2,746,000 from the exercise of stock options from directors and employee.

To date, the Company has generated sufficient funds from its operating activities to finance its operations and there has been little need for external financing. The Company had outstanding short-term borrowings of \$482,000 and no long-term debt at March 31, 2002 and no outstanding short-term-borrowings or long-term debt at March 31, 2001. Deswell had no off balance sheet financing arrangements at March 31, 2002.

As a consequence of the fixed exchange rate between the Hong Kong dollar and the U.S. dollar, interest rates on Hong Kong dollar borrowings are similar to U.S. interest rates. The Hong Kong Prime Rate fluctuated during the year ended March 31, 2002, increasing from 8% at the beginning of the year to 9.5% and then decreased to 5.125% at March 31, 2002.

At March 31, 2002, the Company had cash and cash equivalents of \$31,534,000 and committed credit facilities of \$19,515,000, of which \$2,934,000 had been used. The Company also had restricted cash of \$2,762,000 and leasehold land and buildings of \$1,348,000, which were pledged as collateral for those credit facilities and \$99,000 pledged as deposit for customs duty in Dongguan, China. The Company expects that working capital requirements and capital additions will continue to be funded through cash on hand and internally generated funds. The Company's working capital requirements are expected to increase in line with the growth in the Company's business. The Company had capital commitments for plant and machinery of \$3,363,000 as of March 31, 2002. The Company expects that internally generated funds will be sufficient to satisfy its cash needs for at least the next 12 months.

At March 31, 2002, the Company was obligated under operating leases requiring minimum rentals of \$7,710,000 as follows:

	(In thousands)					
	Year ending March 31,					
	2003	2004	2005	2006	2007	2008 and thereafter
	-----	-----	-----	-----	-----	-----
Operating lease payments	\$1,971	\$1,195	\$987	\$1,004	\$1,047	\$1,506

CRITICAL ACCOUNTING POLICIES

The Company prepares its consolidated financial statements in accordance with accounting principles generally accepted in the United States of America. The preparation of these financial statements requires the Company to make

Edgar Filing: DESWELL INDUSTRIES INC - Form 20-F

estimates and assumptions that affect the reported amounts of assets and liabilities and the disclosure of contingent assets and liabilities at the date of the financial statements and the reported amount of revenues and expenses during the reporting period. On an on-going basis, the Company evaluates its estimates and judgments, including those related to intangible assets, inventories, income taxes and impairment of assets. The Company bases its estimates and judgments on historical experience and on various other factors that the Company believes are reasonable. Actual results may differ from these estimates under different assumptions or conditions.

The following critical accounting policies affect the more significant judgments and estimates used in the preparation of the Company's consolidated financial statements.

Intangible assets -- The Company makes assumptions regarding estimated future cash flows and other factors to determine the fair value of intangible assets. If these estimates or their related assumptions change in the future, the Company may be required to record an impairment charge if the estimated fair value of intangible assets are less than their recorded amount. Through March 31, 2002, the Company has not recorded an impairment charge for intangible assets. Beginning April 1, 2002, the Company will be required to adopt Statement of Financial Accounting Standards No. 142, "Goodwill and Other Intangible Assets", and will be required to analyze goodwill and other intangible assets for impairment issues during the year 2003, and on a periodic basis thereafter.

Inventories -- Inventories, consisting of raw materials, work-in-progress and finished goods, are stated at the lower of cost or market with cost determined using the first-in, first-out method. The Company makes certain obsolescence and other assumptions to adjust inventory based on historical experience and current information. The Company writes down inventory for estimated obsolete or unmarketable inventory equal to the difference between the costs of inventory and estimated market value, based upon assumptions about future demand and market conditions. These assumptions, although consistently applied, can have a significant impact on current and future operating results and financial position.

Income taxes -- The Company records a valuation allowance to reduce its deferred tax assets to the amount that the Company believes is more likely than not to be realized. In the event the Company was to determine that it would be able to realize its deferred tax assets in the future in excess of its recorded amount, an adjustment to the deferred tax asset would increase income in the period such determination was made. Likewise, should the Company determine that it would not be able to realize all or part of its net deferred tax asset in the future, an adjustment to the deferred tax asset would be charged to income in the period such determination was made.

Impairment of assets -- The Company reviews all assets on a regular basis to ensure that there is no impairment in the carrying value. If the Company determines that there has been a permanent decline in, or the Company has become unable to recover the carrying value of the asset, an impairment charge will be recorded, which will have an adverse effect upon the Company's future operating results.

RECENT CHANGES IN ACCOUNTING STANDARDS

In June 2001, the Financial Accounting Standard Board (the "FASB") issued SFAS No. 142, "Goodwill and Other Intangible Assets". SFAS No. 142 provides that goodwill and other intangible assets with indefinite lives will not be amortized, but will be tested for impairment on an annual basis. This statement is effective for fiscal years beginning after December 15, 2001. The Company will adopt this statement on April 1, 2002 and the management is reviewing this statement to determine what effect they will have, if any, on its

Edgar Filing: DESWELL INDUSTRIES INC - Form 20-F

financial position and results of operations.

In August 2001, the FASB issued SFAS No. 143, "Accounting for Asset Retirement Obligations". This statement addresses the diverse accounting practices for obligations associated with the retirement of tangible long-lived assets and the associated asset retirement costs. The Company will be required to adopt this standard on April 1, 2003. The Company is reviewing the statement to determine what effect it will have, if any, on its financial position and results of operations.

In August 2001, the FASB also issued SFAS No. 144, "Accounting for the Impairment or Disposal of Long-Lived Assets", that is applicable to financial statements issued for fiscal years beginning after December 15,

25

2001. The FASBs new rules on asset impairment supersede SFAS No. 121, "Accounting for the Impairment of Long-Lived Assets and for Long-Lived Assets to Be Disposed Of", and portions of APB Opinion No. 30, "Reporting the Results for Operations". The statement requires a single accounting model for long-lived assets to be disposed of and significantly changes the criteria that would have to be met to classify an asset as held-for-sale. Classification as held-for-sale is an important distinction since such assets are not depreciated and are stated at the lower of fair value and carrying amount. The statement also requires expected future operating losses from discontinued operations to be displayed in the period(s) in which the losses are incurred, rather than as of the measurement date as presently required. The Company is reviewing the statement to determine what effect it will have, if any, on its financial position and results of operations.

In April 2002, the FASB also issued SFAS No. 145, "Rescission of FASB Statements No. 4, 44 and 64, Amendment of FASB Statement No. 13, and Technical Corrections", to update, clarify, and simplify certain existing accounting pronouncements. Specifically, SFAS No. 145: (i) Rescinds SFAS No. 4, "Reporting Gains and Losses from Extinguishment of Debt", an amendment of APB Opinion No. 30, and SFAS No. 64, "Extinguishments of Debt Made to Satisfy Sinking-Fund Requirements", which amended SFAS No. 4, as these two standards required that all gains and losses from the extinguishment of debt be aggregate and, if material, classified as an extraordinary item. Consequently, such gains and losses will now be classified as extraordinary only if they meet the criteria for extraordinary treatment set forth in APB Opinion 30, Reporting the Results of Operations - Reporting the Effects of Disposal of a Segment of a Business, and Extra-ordinary, Unusual and Infrequently Occurring Events and Transactions; (ii) Rescinds SFAS No. 44, "Accounting for Intangible Assets of Motor Carriers", an amendment of Chapter 5 of Accounting Research Bulletins No. 43 and an interpretation of APB Opinions 17 and 30, because the discrete event to which the Statement relates is no longer relevant; (iii) Amends SFAS No. 13, "Accounting for leases", to require that certain lease modifications that have economic effects similar to sale-leaseback transactions be accounted for in the same manner as such transactions; (iv) Makes certain technical corrections, which the FASB deemed to be non-substantive, to a number of existing accounting pronouncements. The provisions of SFAS No. 145 related to the rescission of SFAS No. 4 and No. 64 are effective for fiscal years beginning after May 15, 2002. The provisions related to the amendment of SFAS No. 13 are effective for transactions occurring after May 15, 2002. All other provisions of SFAS No. 145 are effective for financial statements issued on or after May 15, 2002. The Company adopted SFAS No. 145 during the year ended March 31, 2002 and it did not impact the Company's financial statements.

ITEM 6. DIRECTORS, SENIOR MANAGEMENT AND EMPLOYEES

DIRECTORS AND SENIOR MANAGEMENT

The directors and executive officers of the Company at June 28, 2002 are as follows:

Name -----	Age ---	Position(s) with Company -----
Lau Pui Hon (Richard Lau)	57	Chief Executive Officer and Chairman of the Board of Directors
Li Chin Pang (C. P. Li)	56	Executive Director and General Manager of Manufacturing and Administration for Plastic Operations, Chief Financial Officer, Secretary and Member of the Board of Directors
Leung Chi Wai (C. W. Leung)	47	Executive Director of Engineering for Plastic Operations and Member of the Board of Directors
Lee Shu Kwan (S. K. Lee)	56	Director of Administration and Marketing for Electronic Operations
Tam Man Chi (M. C. Tam)	52	Director of Engineering and Manufacturing for Electronic Operations
Dickson Lam	60	Director of Marketing for Plastic and Electronics Operations
Eliza Y. P. Pang	40	Financial Controller
Stephen K. Seung	55	Member of Board of Directors and Audit Committee
Hung-Hum Leung	56	Member of Board of Directors and Audit Committee

RICHARD LAU. Mr. Lau has served as Chief Executive Officer and Chairman of the Board of Directors of the Company and its predecessors since their inception in 1987.

C. P. LI. Mr. Li has served the Company as a Member of the Board of Directors and in various executive capacities with the Company and its predecessors since their inception in 1987. He became Secretary of the Company in February 1995 and Chief Financial Officer in May 1995. As Executive Director and General Manager of Manufacturing and Administration for Plastic Operations, Mr. Li is in charge of the day-to-day manufacturing and administrative operations for the Company's plastic products. Mr. Li received his Bachelor of Science degree from Chun Yan Institute College, Taiwan in 1967.

C. W. LEUNG. Mr. Leung has served the Company as a Member of the Board

Edgar Filing: DESWELL INDUSTRIES INC - Form 20-F

of Directors and in various executive capacities with the Company and its predecessors since their inception in 1987. As Executive Director of Engineering for Plastic Operations, Mr. Leung is in charge of the mold division and engineering for the Company's plastic manufacturing operations.

S. K. LEE. Mr. Lee has served as Director of Administration and Marketing for Electronic Operations since the Company acquired its majority interest in Kwanasia, Integrated's predecessor, in 1992 and has served as the Chief Executive Officer of Kwanasia and Integrated since Kwanasia's inception in 1986. As Director of Administration and Marketing for Electronic Operations, Mr. Lee is in charge of the Company's day-to-day administrative and marketing operations for electronic products. Mr. Lee received his Bachelor of Science degree in Electronic Engineering from National Taiwan University in 1967.

M. C. TAM. Mr. Tam has served as Director of Engineering and Manufacturing for Electronic Operations since the Company acquired its majority interest in Kwanasia, Integrated's predecessor, in 1992 and has served in a similar capacity for Kwanasia and Integrated since Kwanasia's inception in 1986. As Director of Engineering and Manufacturing for Electronic Operations, Mr. Tam is in charge of the Company's day-to-day contract manufacturing activities for electronic products. Mr. Tam received his Bachelor of Science degree with a major in physics and minor in electronics from the Chinese University of Hong Kong in 1973.

27

DICKSON LAM. Mr. Lam joined the Company as Director of Marketing in April 1990 and assumed the title of Director of Marketing for Plastic and Electronic Operations in August 2001. From 1983 until joining the Company, Mr. Lam managed Heng Shing Industrial Company, his own plastics manufacturing company, located in Hong Kong.

ELIZA Y. P. PANG. Ms. Pang, a registered fellow member of The Association of Chartered Certified Accountants, joined the Company as Financial Controller in January 1995. Prior to joining the Company, Ms. Pang worked for three and one-half years as Accounting Officer and Accountant in the Open Learning Institute and a textile manufacturing company in Hong Kong. She also worked for six years in the audit department of two multinational accounting firms, KPMG and Ernst & Young in Hong Kong. Ms. Pang received her Professional Diploma in Accountancy and her MBA degree from The Hong Kong Polytechnic University in 1985 and 1996, respectively.

STEPHEN K. SEUNG. Mr. Seung has been a director of the Company and member of the Audit Committee since July 1995. Mr. Seung is an attorney and since 1981 has been engaged in the private practice of law in New York, New York. Mr. Seung received a B.S. degree in Engineering from the University of Minnesota in 1969, an M.S. degree in Engineering from the University of California at Berkeley in 1971, an MBA degree from New York University in 1973 and a J.D. degree from New York Law School in 1979. Mr. Seung also serves the Company as its authorized agent in the United States.

HUNG-HUM LEUNG. Mr. Leung has been a director of the Company and member of the Audit Committee since December 1999. Mr. Leung has over 25 years of experience in the manufacture of electronic products. Mr. Leung was the founder of Sharp Brave Holdings Ltd., a Hong Kong public company listed on the Hong Kong Stock Exchange, and from 1991 to 1995 served as the Chairman of Sharp Brave Holdings Ltd. Since 1995, Mr. Leung has been an independent consultant to the electronics industry. He received his Bachelor of Science degree in Physics from

Edgar Filing: DESWELL INDUSTRIES INC - Form 20-F

the National Taiwan University in 1971.

No family relationship exists among any of the named directors, executive officers or key employees. No arrangement or understanding exists between any director or officer and any other persons pursuant to which any director or executive officer was elected as a director or executive officer of the Company.

COMPENSATION OF DIRECTORS AND SENIOR MANAGERS

Executive Officers

The aggregate amount of compensation (including non-cash benefits) paid by the Company and its subsidiaries during the year ended March 31, 2002 to all directors and executive officers as a group for services in all capacities was approximately \$3,104,000 and excludes amounts paid by the Company to shareholders as dividends during the year ended March 31, 2002. For information concerning the Company's policy for dividends, see Item 8. Financial Information -- Dividend Policy.

Directors

From July 1995 to September 2000, it was the Company's policy to pay each director who was not an employee of the Company or any of its subsidiaries \$500 per month. Since October 2000, it has been the Company's policy to pay each director who is not an employee of the Company or any of its subsidiaries \$1,000 per month. The Company also reimburses such director all reasonable expenses incurred in connection with services as a director.

BOARD PRACTICES

The directors of the Company are elected at its annual meeting of shareholders and serve until their successors take office or until their death, resignation or removal. The executive officers serve at the pleasure of the Board of Directors of the Company.

The Audit Committee meets from time to time to review the financial statements and matters relating to the audit and has full access to management and the Company's auditors in this regard. The Audit Committee

28

recommends the engagement or discharge of the Company's independent accountants, consults on the adequacy of the Company's internal controls and accounting procedures and reviews and approves financial statements and reports. Deswell's audit committee consists of Messrs. Stephen Seung and Hung-Hum Leung.

The Company does not have a compensation or remuneration committee.

EMPLOYEES

At March 31, 2002, the Company employed 3,819 persons on a full-time basis, of which 37 were located in Hong Kong and 3,782 in China. Of the Company's employees 2,324, 1,005 and 490 were engaged in plastic injection molding manufacturing, contract electronic manufacturing and metal molds and parts manufacturing, respectively, at March 31, 2002. The Company has not experienced significant labor stoppages. Management believes that relations with the Company's employees are satisfactory.

Edgar Filing: DESWELL INDUSTRIES INC - Form 20-F

SHARE OWNERSHIP

SHARE OWNERSHIP OF DIRECTORS AND SENIOR MANAGEMENT

For information concerning the beneficial ownership of the Company's common shares by Directors and Senior Management and major shareholders, see Item 7 of this Report.

EMPLOYEE STOCK OPTION PLANS

In 1995, the Company adopted its 1995 Stock Option Plan permitting the Company to grant options to purchase up to 450,000 common shares to employees, officers, directors and consultants of the Company. On September 29, 1997, the Company's Board of Directors and shareholders approved an increase of 244,000 shares in the number of shares that can be optioned and sold under the Option Plan bringing to a total of 694,000 shares the number of common shares that can be optioned and sold under the Option Plan. On August 15, 2001 the Board approved the adoption of the 2001 Stock Option Plan permitting the Company to grant options to purchase up to an additional 500,000 common shares to employees, officers, directors and consultants of the Company. On January 7, 2002 shareholders approved the 2001 plan. The Company's option plans are administered by the Board of Directors, which determines the terms of options granted, including the exercise price, the number of shares subject to the option and the option's exercisability. The exercise price of all options granted under the option plans must be at least equal to the fair market value of such shares on the date of grant. The maximum term of options granted under the option plans is 10 years.

At June 28, 2002, options to purchase an aggregate of 1,194,000 common shares had been granted under the option plans, options to purchase an aggregate of 651,000 common shares were outstanding and no options to purchase common shares were available for future grant under the option plans.

29

ITEM 7. MAJOR SHAREHOLDERS AND RELATED PARTY TRANSACTIONS

BENEFICIAL OWNERSHIP BY MAJOR SHAREHOLDERS AND SENIOR MANAGEMENT

Except as disclosed in the footnotes to the table below with respect to Leesha Holdings Limited ("Leesha"), The Company is not directly owned or controlled by another corporation or by any foreign government. The following table sets forth, as of June 28, 2002, the beneficial ownership of the Company's common shares by each person known by the Company to beneficially own 5% or more of the common shares of the Company and by each of the Directors and Senior Management of the Company who beneficially own in excess of one percent of our common shares.

NAME OF BENEFICIAL OWNER OR IDENTITY OF GROUP	NUMBER OF SHARES BENEFICIALLY OWNED (1)	
-----	AMOUNT	PERCENT
-----	-----	-----

Edgar Filing: DESWELL INDUSTRIES INC - Form 20-F

Richard Lau	1,936,210 (2)	33.2%
C. P. Li	1,954,810 (3)	33.4%
C. W. Leung	1,919,210 (4)	33.0%
Leesha Holdings Ltd.	1,535,000 (5)	27.2%
Micropower Enterprises Limited	455,000	8.1%
Royce & Associates, Inc. (6)	358,200 (6)	6.3%
S. K. Lee	*	*
M. C. Tam	*	*
Dickson Lam	*	*
Eliza Y. P. Pang	*	*
Stephen K. Seung	*	*
Hung-Hum Leung	*	*

* Less than 1%.

(1) Based on 5,646,831 common shares outstanding on June 28, 2002. However, in accordance with Rule 13d-3(d)(1) under the Securities Exchange Act of 1934, common shares not outstanding but which are the subject of currently exercisable options have been considered outstanding for the purpose of computing the percentage of outstanding common shares owned by the listed person holding such options, but are not considered outstanding for the purpose of computing the percentage of common shares owned by any of the other listed persons.

(2) Consists of 1,535,000 common shares held of record by Leesha, 221,210 common shares held of record by Mr. Lau and options to purchase 180,000 common shares granted to Mr. Lau under the Company's Stock Option Plan. Mr. Lau's options are exercisable at a weighted average exercise price of \$16.50 per share until January 9, 2012. As a director of Leesha, Mr. Lau shares the voting and investment power as to the common shares held by Leesha.

(3) Consists of 1,535,000 common shares held of record by Leesha, 219,810 common shares held of record by Mr. Li and options to purchase 200,000 common shares granted to Mr. Li under the Company's Stock Option Plan. Mr. Li's options are exercisable at a weighted average exercise price of \$16.325 per share until January 9, 2012. As a director of Leesha, Mr. Li shares the voting and investment power as to the common shares held by Leesha.

(4) Consists of 1,535,000 common shares held of record by Leesha, 209,210 common shares held of record by Mr. Leung and options to purchase 175,000 common shares granted to Mr. Leung under the Company's Stock Option Plan. Mr. Leung's options are exercisable at a weighted average exercise price of \$16.55 per share until January 9, 2012. As a director of Leesha, Mr. Leung shares the voting and investment power as to the common shares held by Leesha.

30

(5) Leesha is an investment holding company organized as an International Business Company under the laws of the British Virgin Islands. Messrs. Lau, Li and Leung, who are its directors, wholly own Leesha in equal shares. Among other investments, Leesha owns the 1,535,000 common shares of Deswell, which were transferred to Leesha by Messrs. Lau, Li and Leung after Deswell's initial public offering.

(6) Based on a Schedule 13G/A filed with the SEC on February 13, 2002.

The following table reflects the percentage ownership of Deswell's

Edgar Filing: DESWELL INDUSTRIES INC - Form 20-F

common shares by its major shareholders during the past three years:

	Percentage Ownership(1) at		
	June 30, 2000	June 30, 2001	June 28, 2002
Richard Lau	42.2%	32.1%	33.2%
C. P. Li	41.8%	32.1%	33.4%
C. W. Leung	41.8%	31.4%	33.0%
Leesha Holdings Ltd.	38.1%	27.4%	27.2%
Nam Tai Electronics, Inc	-	8.9%	-
Micropower Enterprises Limited	8.5%	8.1%	8.1%
Royce & Associates, Inc.	-	5.2%	6.3%

(1) Based on 5,347,931, 5,597,931 and 5,646,831 common shares outstanding on June 30, 2000 and 2001 and on June 28, 2002, respectively. However, in accordance with Rule 13d-3(d) (1) under the Securities Exchange Act of 1934, common shares not outstanding but which are the subject of currently exercisable options have been considered outstanding for the purpose of computing the percentage of outstanding common shares owned by the listed person holding such options, but are not considered outstanding for the purpose of computing the percentage of common shares owned by any of the other listed persons.

All of the holders of the Company's common shares (including Deswell's major shareholders) have equal voting rights with respect to the common shares held. As of June 28, 2002, approximately 34 holders of record, who, management believes, held for more than 3,000 beneficial owners, held Deswell's common shares. According to information supplied to the Company by its transfer agent, 26 holders of record with addresses in the United States held approximately 3.4 million of our outstanding common shares.

31

RELATED PARTY TRANSACTIONS

During the years ended March 31, 2002, 2001 and 2000, sales to Nam Tai Electronic (Shenzhen) Co. Limited ("Namtai Shenzhen") amounted to less than 10% of our total sales. Namtai Shenzhen is an indirect wholly owned subsidiary of Nam Tai Electronics, Inc. ("Nam Tai"), which, in September 2000, purchased an aggregate of 500,000 common shares of the Company, equal to approximately 9% of the Company's outstanding common shares. During the year ended March 31, 2002, Nam Tai sold its shares of the Company in the open market.

The Company rents staff quarters in China from Mr. S. K. Lee and Mr. M. C. Tam, who are executive officers of the Company and minority shareholders of Integrated. The charges for these premises approximate the amount negotiable, in management's opinion, on an arms length basis. Rentals charged by these parties to the Company are summarized as follows:

YEAR ENDED MARCH 31,

Edgar Filing: DESWELL INDUSTRIES INC - Form 20-F

	2000	2001	2002
Rent charged by Mr. S. K. Lee and Mr. M.C. Tam	\$12,000	\$12,000	\$12,000

During the year ended March 31, 2001, the Company acquired an automobile from Unicrown Limited for \$206,000, which, management believes, approximated its fair value. Mr. Richard Lau, a director of the Company, has a beneficial interest in that company.

In June 1995, the Company's Board of Directors adopted a policy resolution prohibiting the Company from making any loan or advance of money or property, or guaranteeing the obligation of any directors of the Company, and limiting the Company's ability to make such loans, advances or guarantees to officers of the Company or its subsidiaries unless approved by a majority of independent disinterested outside directors.

Since the Company completed its initial public offering in the United States, it has been the policy of the Company that all transactions between the Company and any interested director or executive officer be approved by a majority of the disinterested directors and be on terms that are no more favorable than would be available from an independent third party.

32

ITEM 8. FINANCIAL INFORMATION

FINANCIAL STATEMENTS

Our Consolidated Financial Statements are set forth under Item 18. Financial Statements.

LEGAL PROCEEDINGS

The Company is not involved in any material legal proceedings.

EXPORTS SALES

Information regarding our export sales is provided in Item 4. "Information on the Company -- "Business Overview -- Customers and Marketing."

DIVIDEND POLICY

Dividends paid under Hong Kong law are tax free to the recipient. While the Company had paid dividends to its shareholders prior to its IPO, it discontinued payment of dividends after the IPO until its new dividend policy was announced in July 1996. At that time, the Company announced that it planned to pay cash dividends semi-annually in the form of an interim and final dividend based on the Company's growth during the preceding year. The Company announced that dividends would be 25% to 35% of the net earnings of the preceding year limited, however, by the net cash flow available for future development. The interim dividend would be based upon the Company's first six months operating results and would be paid between November and December and the final dividend would be based upon the Company's second six months of operations and would be declared and paid between July and August. Under this dividend policy, the Company declared and paid dividends during the two-year period ended March 31:

Edgar Filing: DESWELL INDUSTRIES INC - Form 20-F

- 2000 aggregating \$4,777,000, \$3,012,000 of which was based on results for the second six months of the year ended March 31, 1999 and \$1,765,000 of which was based on results for the first six months of the year ended March 31, 2000 and
- 2001 aggregating \$4,710,000, \$2,942,000 of which was based on results for the second six months of the year ended March 31, 2000 and \$1,768,000 of which was based on results for the first six months of the year ended March 31, 2001;
- 2002 aggregating \$7,229,000, \$3,193,000 of which was based on results for the second six months of the year ended March 31, 2001 and \$4,036,000 of which was based on results for the first nine months of the year ended March 31, 2002.

The Company currently plans to continue its dividend policy as announced, but such plans and policy for future dividends consist of forward-looking statements within the meaning of Section 27A of the Securities Act of 1933 and Section 21E of the Securities Exchange Act of 1934. Whether future dividends will be declared will be depended upon the Company's future growth and earnings, of which there can be no assurance, and the Company's cash flow needs for future development, which growth, earning or cash flow needs may be adversely affected by one or more of the factors discussed in Item 3. Key Information -- Risk Factors. Accordingly, there can be no assurance that future cash dividends on the Company's common shares will be declared, what the amounts of such dividends will be or whether such dividends, once declared for a specific period will continue for any future period or at all.

33

ITEM 9. THE LISTING

The Company's common shares are traded exclusively on The Nasdaq National Market under the symbol "DSWL".

The following table sets forth the high and low sale prices as reported by The Nasdaq National Market for each of the last five years ended March 31:

YEAR ENDED -----	HIGH -----	LOW -----
March 31, 2002	\$22.12	\$13.125
March 31, 2001	18.00	12.25
March 31, 2000	18.50	7.9375
March 31, 1999	21.6875	6.00
March 31, 1998	27.75	14.50

The following table sets forth the high and low sale prices as reported by The Nasdaq National Market during each of the quarters in the two-year period ended March 31, 2002 and the average daily trading volume during each of the quarters.

Edgar Filing: DESWELL INDUSTRIES INC - Form 20-F

QUARTER ENDED -----	HIGH -----	LOW -----	AVERAGE DAILY TRADING VOLUME (1) -----
March 31, 2002	\$22.12	\$17.00	26,516
December 31, 2001	19.62	13.80	6,262
September 30, 2001	17.20	13.51	3,957
June 30, 2001	16.54	13.125	4,119
March 31, 2001	18.00	12.25	5,028
December 31, 2000	17.4375	14.75	7,637
September 30, 2000	18.00	12.25	7,189
June 30, 2000	16.1875	12.875	6,975

 (1) Determined by dividing the sum of the reported daily volume for the quarter by the number of trading days in the quarter.

The following table sets forth the high and low sale prices as reported by The Nasdaq National Market during each of the most recent six months and the average daily trading volume during each of the months.

MONTH ENDED -----	HIGH -----	LOW -----	AVERAGE DAILY TRADING VOLUME (1) -----
June 30, 2002	\$23.30	\$18.51	13,489
May 31, 2002	23.50	21.361	5,034
April 30, 2002	23.65	21.68	7,425
March 31, 2002	22.12	20.00	40,910
February 28, 2002	20.81	18.85	26,232
January 31, 2002	21.00	17.00	13,064

 (1) Determined by dividing the sum of the reported daily volume for the month by the number of trading days in the month.

34

ITEM 10. ADDITIONAL INFORMATION

SHARE CAPITAL

Not applicable.

MEMORANDUM AND ARTICLES OF ASSOCIATION

Objects and Purposes

Our objects and purposes are described in Clause 4 of our Memorandum of Association and are generally to engage in any act or activity that is not

Edgar Filing: DESWELL INDUSTRIES INC - Form 20-F

prohibited under the laws of the British Virgin Islands.

Directors

British Virgin Islands law and our Articles of Association provide that no agreement or transaction between Deswell and one or more of its directors or any entity in which any director has a financial interest or to whom any director is related (including as a director of that other entity) is void or voidable for this reason only or by reason only that the director is present at the meeting of directors, or at the meeting of the committee of directors, that approves the agreement or transaction or that the vote or consent of the director is counted for the purpose if the material facts of the interest of each director in the agreement or transaction and his or her interest in or relationship to any other party to the agreement or transaction are disclosed in good faith or are known by the other directors and a majority of the Company's directors (at least one whom is an "Independent Director") approve such transaction. Alternatively, the interest in the transaction may be disclosed or known to or ratified by the shareholders.* In addition, a director who has an interest in any particular business to be considered at a meeting of directors or shareholders may be counted for the purposes of determining whether the meeting is duly constituted. An "Independent Director" is defined in our Articles of Association as a director other than an officer or employee of Deswell or any of its subsidiaries, a person related to an officer or employee of Deswell or any of its subsidiaries, a person representing family or concentrated (more than 10%) holdings of Deswell's outstanding voting shares or any other individual having a relationship which, in the opinion of the directors, would interfere with the exercise of independent judgment in carrying out the responsibilities of a director.

Our Articles of Association provide that the directors may by a resolution of directors, fix the emoluments of directors with respect to services to be rendered in any capacity to the Company.

British Virgin Islands law and our Articles of Association provide that the management of the business and the control of Deswell shall be vested in the directors, who in addition to the powers and authorities expressly conferred by the Articles of Association, may also exercise all such powers, and do all such acts and things, as may be done by Deswell and are not by the Articles of Association or British Virgin Islands law expressly directed or required to be exercised or done by a meeting of shareholders. Our Articles of Association provide that the directors may by resolution exercise all the powers of Deswell to borrow money and to mortgage or charge its undertakings and property or any part thereof, to issue debentures, debenture stock and other securities whenever money is borrowed or as security for any debt, liability or obligation of Deswell or of any third party.

British Virgin Islands law and our Memorandum of Association and Articles of Association do not contain an age limit requirement for our directors. Under our Articles of Association, no shares are required for director's qualification.

Rights, Preferences and Restrictions of Authorized and Outstanding Shares and Changes to Rights of Shareholders

Deswell has one class and series of shares authorized or outstanding: common shares, \$0.01 par value per share. Our authorized capital consists of 20,000,000 common shares, \$0.01 par value per share, of which 5,646,831

* British Virgin Islands law does not use the term "shareholder" or "stockholder" but rather refers to holders of shares of a company, like Deswell, organized under the International Business Companies Act as "members." In this

Edgar Filing: DESWELL INDUSTRIES INC - Form 20-F

Report, for the convenience of our U.S. holders, we use the term "shareholders" rather than members.

35

common shares were outstanding on June 28, 2002. On June 17, 2002, we announced that we are effecting a three-for-two stock split of our outstanding shares to holders record on July 8, 2002 and payable on July 22, 2002. In conjunction with this stock split and proportionate to it, we are amending our Memorandum of Association effective on July 8, 2002 to increase authorized capital to 30,000,000 common shares. We are also amending our Memorandum of Association effective on July 8, 2002 to convert the par value of our shares from \$0.01 par value per share to no par value per share.

Holders of our common shares are entitled to one vote for each whole share on all matters to be voted upon by shareholders, including the election of directors. Holders of our common shares do not have cumulative voting rights in the election of directors. All of our common shares are equal to each other with respect to liquidation and dividend rights. Holders of our common shares are entitled to receive dividends if and when declared by our board of directors out of funds legally available under British Virgin Islands law. In the event of our liquidation, all assets available for distribution to the holders of our common shares are distributable among them according to their respective holdings. Holders of our common shares have no preemptive rights to purchase any additional, unissued common shares.

Calling Annual General Meetings and Extraordinary General Meetings of Shareholders.

British Virgin Islands law does not require an international business company, such as Deswell, to have an annual meeting. Our Articles of Association do, however, require an annual meeting of shareholders for the election of directors and for such other business as may come before the meeting.

Under British Virgin Islands law, unless otherwise provided by a company's Memorandum of Association or Articles of Association, the directors may call meetings of shareholders at any time. Our Memorandum and Articles of Association do not provide otherwise. Under British Virgin Islands law, unless otherwise provided by a company's Memorandum of Association or Articles of Association, directors are required to call meetings upon a written request from shareholders holding more than 50% of outstanding voting shares. Our Articles of Association provide that meetings of shareholders may be called only upon a written request from shareholders holding 10% or more of the outstanding voting shares.

British Virgin Islands law and our Articles of Association state that the directors may fix the date that notice is given of a meeting of shareholders, whether extraordinary or annual, as the record date for determining those shares that are entitled to vote at the meeting.

British Virgin Islands law and our Articles of Association provide that notice of all meetings of shareholders, stating the time, place and purposes thereof, shall be given not fewer than seven days before the date of the proposed meeting to those persons whose names appear as shareholders in our share register on the date of the notice and are entitled to vote at the meeting.

Limitations on Share Ownership

Edgar Filing: DESWELL INDUSTRIES INC - Form 20-F

British Virgin Islands law and our Memorandum of Association and Articles of Association do not impose any limitations on the right of anyone to own, hold or exercising voting rights to our common shares.

Potential Anti-Takeover Deterrence

Neither our Articles of Association nor Memorandum of Association contain provisions that would have an effect of delaying, deferring or preventing a change in control of Deswell and that would operate only with respect to a merger, acquisition or corporate restructuring involving Deswell or any of its subsidiaries. However, pursuant to our Memorandum and Articles of Association and pursuant to the laws of the British Virgin Islands, our board of directors without shareholder approval may amend our Memorandum and Articles of Association (provided that a majority of our independent directors do not vote against the amendment). This includes amendments to increase or reduce our authorized capital stock. Our ability to amend our Memorandum and Articles of Association without shareholder approval could have the effect of delaying, deterring or preventing a change in control of Deswell, including a tender offer to purchase our common shares at a premium over the then current market price.

36

Ownership Information

Neither our Articles of Association nor Memorandum of Association provide that information about our shareholders, even those owning significant percentages of our shares, must be disclosed.

Differences from United States Law

The laws of the BVI governing the provisions of our Articles of Association and Memorandum of Association discussed above are not significantly different than the laws governing similar provisions in the charter documents of Delaware companies, other than with respect to amending our Memorandum of Association without shareholder approval. Delaware law requires shareholders to approve any amendments to a corporation's Certificate of Incorporation.

MATERIAL CONTRACTS

The following summarizes each material contract, other than contracts entered into in the ordinary course of business, to which Deswell or any subsidiary of Deswell is a party for the two years immediately preceding the filing of this report. The Reference to an Exhibit is to the exhibits appearing in Item 19 of this report.

Banking Facilities (Exhibit 4.1)

Date: December 13, 2001

Parties: The Sanwa Bank Limited ("Sanwa") and Jetcrown Industrial Limited ("Jetcrown")

Nature of Contract: Renewal of Facility Letter dated December 27, 2000 and October 27, 2000 whereby Sanwa made available to Jetcrown various uncommitted banking facilities.

Terms and Conditions: (A) A joint line facility of up to HK\$22,000,000

Edgar Filing: DESWELL INDUSTRIES INC - Form 20-F

consisting of the following facilities: (i) uncommitted short-term multi-currency revolving loan facility (ii) overdraft facility (iii) import facility (provided that the aggregate principal amounts outstanding under the loan facility and the overdraft facility shall not at any one time exceed HK\$7,800,000); (B) Shipping guarantee facility (under the letter of credit) of up to HK\$8,000,000; (C) Bills negotiation facility (under the letter of credit) of up to HK\$30,000,000; (D) Forward foreign exchange facility of up to HK\$16,000,000.

Consideration: The interest and commissions set forth in the agreement dated December 13, 2001.

Banking Facilities (Exhibit 4.2)

Date: March 2, 2001

Parties: Standard Chartered Bank ("Standard") and Jetcrown

Nature of Contract: Renewal of Facility Letter dated March 9, 2000 whereby Standard made available to Jetcrown various working capital facilities.

Terms and Conditions: Working Capital Facilities (1) Current Account Overdraft is HKD3,500,000; (2) Trade Finance Group 1 is HKD10,000,000; (3) Trade Finance Group 2 is HKD3,500,000; (4) Trade Finance Group 3 HKD3,500,000 (the trade finance groups are complementary and combined amounts outstanding are not to exceed HKD10,000,000; combined amounts outstanding of Trade Finance Groups 2 and 3 are not to exceed HKD3,500,000); (5) Treasury Facilities to quote rates for foreign exchange spot transactions and forward transactions; (6) Corporate Visa Cards with limits of HKD450,000. Interest rate on all sums advanced will be payable monthly at the prime rate. Default rate of prime plus 8% per annum. Letters of Credit Opening Commission and Commission in lieu of Exchange is 1/8% on the first USD100,000 and 1/32% on the balance. Commission in lieu for Negotiation of Discrepant Documents is 1/8% for the first USD100,000 and 1/32% on the balance.

37

Consideration: The interest and commissions set forth above.

Banking Facilities (Exhibit 4.3)

Date: February 20, 2002

Parties: Standard and Kwanasia Electronics Co. Ltd. ("Kwanasia")

Nature of Contract: Standard to provide Kwanasia with working capital facilities.

Terms and Conditions: Working Capital Facilities (1) Current Account Overdraft is HKD1,000,000 ; (2) Trade Finance Group 1 is HKD10,000,000; (3) Trade Finance Group 2 is HKD4,000,000; (4) Trade Finance Group 3 HKD4,000,000 (the trade finance groups are complementary and combined amounts outstanding are not to exceed HKD10,000,000; combined amounts outstanding of Trade Finance Groups 2 and 3 are not to exceed HKD4,000,000) (5) Standby Letters of Credit is HKD5,000,000; (6) Factoring Facility of HKD10,000,000 for the purchase of receivables in accordance with the Receivables Purchase Agreement (7) Treasury Facilities to quote rates for foreign exchange spot transactions and forward transactions;. Interest rate on all sums advanced will be payable monthly at the prime rate per

Edgar Filing: DESWELL INDUSTRIES INC - Form 20-F

annum. Default rate of 8% per annum over Prime or HIBOR, whichever is higher will apply to amounts not paid when due or in excess of agreed facility amounts. Export bills will be discounted and import bills will be financed at Bank's standard bills finance rate minus 0.25% per annum for Hong Kong Dollar Bills and at Bank's standard bills finance rate for foreign currency bills. All past due bills shall bear interest at 4% per annum above the rates charged on regular bills outstanding. Commission on Letters of Credit Opening is 1/4% on the first USD50,000, 1/12% on USD50,001-USD100,000 and 1/24% on the balance. Commission in Lieu of Exchange is 1/8%. Commission on Import Acceptance is 1/8% per month.

Consideration: An arrangement fee of HKD10,000. A handling fee in an amount to be mutually agreed upon will be payable annually if the facilities are continuing.

Banking Facilities (Exhibit 4.4)

Date: November 1, 2001

Parties: Fortis Bank Asia HK ("Fortis") and Kwanasia

Nature of Contract: Fortis to provide Kwanasia with various general banking facilities.

Terms and Conditions: (1) Current Account Overdraft and/or standby letter of credit issued on Kwanasia's behalf of limit HKD5,000,000; (2) Import facilities against 100% sales contracts and/or invoice discounting facilities of limit HKD5,000,000.

Consideration: The interest and commissions set forth in the agreement dated November 1, 2001. A set up fee of HKD5,000 and an annual facilities fee of HKD8,000 per annum.

Banking Facilities (Exhibit 4.5)

Date: November 12, 2001

Parties: CITIC Ka Wah Bank Limited ("Ka Wah") and Kwanasia

Nature of Contract: Ka Wah to provide Kwanasia with various general banking facilities.

Terms and Conditions: (1) Documentary Credit plus (90 days inclusive of usage period) Trust Receipt Facility and Invoice Discount -- Export Facility on approved buyers up to the total extent of HKD4,000,000; (2) Standby Letter of Credit of HKD8,000,000.

Consideration: The interest and commissions set forth in the agreement dated November 1, 2001. An arrangement fee of HKD8,000.

38

Banking Facilities (Exhibit 4.6)

Date: February 28, 2002

Parties: Dao Heng Bank Limited ("Dao Heng") and Kwanasia

Nature of Contract: Dao Heng to provide Kwanasia with various general banking

Edgar Filing: DESWELL INDUSTRIES INC - Form 20-F

facilities.

Terms and Conditions: Letters of Credit, Trust Receipts, Import Loans, Acceptance Bills plus Negotiation of Export Bills under letter of credit with discrepancies of limit HKD10,000,000.

Consideration: The interest and commissions set forth in the agreement dated February 28, 2002. An arrangement fee of HKD5,000.

Bank Loan (Exhibit 4.7)

Date: August 20, 2001

Parties: Industrial and Commercial Bank of China, Guangzhou City Branch ("ICCB") and Dongguan Kwan Hong Electronics Co. Ltd. ("Kwan Hong")

Nature of Contract: ICCB to provide Kwan Hong with working capital bank loan.

Terms and Conditions: Short term bank loan of RMB2,000,000. The loan interest is payable monthly at the rate of 4.875% per month.

Consideration: The bank loan shall be secured by standby letter of credit

Bank Loan (Exhibit 4.8)

Date: August 15, 2001

Parties: China Construction Bank, Dongguan City Branch ("CCB") and Kwan Hong

Nature of Contract: CCB to provide Kwan Hong with working capital bank loan.

Terms and Conditions: Short term bank loan of RMB2,000,000. The loan interest is payable monthly at the rate of 4.875% per month.

Consideration: The bank loan shall be secured by standby letter of credit

Tenancy Agreement (Exhibit 4.9)

Date: February 14, 2001

Parties: Shenzhen Shekou Yu Yi Shareholding Company Ltd. (Lessor) and Jetcrown Industrial (Shenzhen) Limited.

Nature of Contract: Rental of property located at 1/F and 2/F, of Block A, Wing Village Industrial Estate, Shekou, Shenzhen.

39

Terms and Conditions: The construction area of the property is 1,838 square meters. Originally three-year term, commencing February 20, 1998 to February 19, 2001 but extended two more years, commencing February 20, 2001 to February 19, 2003. Rent is RMB39,556 per month. Lessor is responsible for property tax, land use fees and rental housing management fees. Lessee is to give a three-month deposit in the amount of RMB118,668. Lessee can only sublet with Lessor's approval. Lessee should inform Lessor of desire to renew lease one month before expiration.

Consideration: Rent of RMB39,556 per month.

Edgar Filing: DESWELL INDUSTRIES INC - Form 20-F

Sale and Purchase Agreement (Exhibit 4.10)

Date: October 25, 2000

Parties: Shenzhen Shekou Real Property Co. Ltd. (Seller) and Jetcrown Industrial (Shenzhen) Limited (Purchaser).

Nature of Contract: Purchase of property located at 1-6/F., Block G, Wing Village Industrial Estate, Shekou, Shenzhen.

Terms and Conditions: The construction area is 10,368.50 square meters total. The purchase consideration is RMB12 millions.

Consideration: Purchase consideration of RMB12 millions.

Tenancy Agreement (Exhibit 4.11)

Date: April 25, 2001

Parties: Shenzhen Shekou NanShui Enterprises Shareholding (Lessor) and Jetcrown Industrial (Shenzhen) Ltd. (Lessee)

Nature of Contract: Lease of property located at 3/F and 4/F, Block E, Wing Village Industrial Estate, Shekou, Shenzhen.

Terms and Conditions: The construction area of 3/F and 4/F is 2,160 total square meters. The rental period is two years, commencing May 1, 2001 to May 1, 2003. Rent for the total property is RMB33,480 per month. The Lessor is responsible to pay for property tax, land use fees and the rental housing management fee of the property. The Lessee is responsible for the water, electricity, cleansing and management charges. A deposit of RMB60,000 is required. Lessee is not allowed to sublet the property without the Lessor's written agreement. Lessee should inform Lessor of its desire to renew the lease one month before expiration and Lessee should be given first priority to renew under the same conditions offered by any third party. The delay charge on Lessee's payment of rent is 3% of the monthly rent multiplied by the number of days the rent is overdue.

Consideration: Rent of RMB33,480 per month.

Tenancy Agreement (Exhibit 4.12)

Date: October 13, 1999

Parties: Shenzhen Shekou NanShui Enterprises Shareholding Co. Ltd. (Lessor) and Jetcrown Industrial (Shenzhen) Limited (Lessee).

Nature of Contract: Rental of property located at 2/F., Block E, Wing Village Industrial Estate, Shekou, Shenzhen.

Terms and Conditions: The construction area of 2/F is 692 square meters. The rental period is for three years, commencing September 15, 1999 to September 14, 2002. Rent for the total property is RMB8,996 per month. The Lessor is responsible to pay for property tax, land use fees and the rental housing management fee of the property. The Lessee is responsible for the water, electricity, cleansing and management charges. A deposit of RMB17,992 is

Edgar Filing: DESWELL INDUSTRIES INC - Form 20-F

required. Lessee is not allowed to sublet the property without the Lessor's written agreement. Lessee should inform Lessor of its desire to renew the lease one month before expiration and Lessee should be given first priority to renew under the same conditions offered by any third party. Lessee should inform Lessor in writing of its desire to renew the lease two months before the expiration of the lease.

Consideration: Rent of RMB8,996 per month.

Tenancy Agreement (Exhibit 4.13)

Date: September 29, 2000

Parties: Shenzhen City Nin Fung Real Property Company Limited (Lessor) and Jetcrown Industrial (Shenzhen) Limited (Lessee).

Nature of Contract: Rental of 1/F to 3/F., Block B, Wing Village Industrial Estate, NanShan District, Shekou, Shenzhen.

Terms and Conditions: The construction area is 5,226 square meters. The rental period is from January 1, 2001 until January 1, 2004. Rent for the total property is RMB3,630,000 for three years. A deposit of RMB106,262 is required. Lessor is responsible for the property tax, land use fees and the rental housing management fees. Lessee is responsible for the water, electricity, cleansing and management charges. Lessee should inform Lessor in writing of its desire to renew the lease one month before the expiration of the lease.

Consideration: Rent of RMB3,630,000 for three years rental period.

Tenancy Agreement (Exhibit 4.14)

Date: April 9, 2001

Parties: Shenzhen Shekou East Empire Industrial Co. Ltd. (Lessor) and Jetcrown Industrial (Shenzhen) Limited (Lessee).

Nature of Contract: Lease of property located at 2/F-5/F, Block H, Wing Village Industrial Estate, Shenzhen.

Terms and Conditions: The construction area is 4,120 square meters. The rental period is two years, commencing May 1, 2001 to April 30, 2003. The total rent for the property is RMB63,860 per month. A deposit of RMB121,540 is required. The Lessor is responsible to pay for the property tax, land use fees and the rental housing management fees. The Lessee is responsible for the water, electricity, cleansing and management charges. The Lessee may not sublease the property without the written approval of the Lessor. Lessee should inform Lessor in writing of its desire to renew the lease three months before the expiration of the lease. Lessee should be given first priority to rent the property under the same terms and conditions as offered by any third party. The delay charge on Lessee's payment of rent is 5% of the monthly rent multiplied by the number of days the rent is overdue.

Consideration: Rent of RMB63,860 per month.

Tenancy Agreement (Exhibit 4.15)

Date: December 11, 2000

Parties: Shenzhen Shekou Tai Shen Enterprises Shareholding Co. Ltd. (Lessor) and Jetcrown Industrial (Shenzhen) Limited (Lessee).

Edgar Filing: DESWELL INDUSTRIES INC - Form 20-F

Nature of Contract: Lease of property located at 1/F to 5/F, Block D, Wing Village Industrial Estate, Shekou, Shenzhen.

Terms and Conditions: The construction area is 5,442 square meters. The rental period is three years, commencing January 11, 2000 to December 31, 2002. The total rent for the property is HKD108,840 per month. A deposit of

41

HKD300,000 is required. The Lessor is responsible to pay for the property tax, land use fees and the rental housing management fees. The Lessee is responsible for the water, electricity, cleansing and management charges. The Lessee may not sublease the property without the written approval of the Lessor. Lessee should inform Lessor in writing of its desire to renew the lease three months before the expiration of the lease. Lessee should be given first priority to rent the property under the same terms and conditions as offered by any third party. The delay charge on Lessee's payment of rent is 3% of the monthly rent multiplied by the number of days the rent is overdue.

Consideration: Rent of RMB108,840 per month.

Tenancy Agreement (Exhibit 4.16)

Date: January 20, 2000

Parties: DongGuan Houjie Town Huangguan Industrial Estate Committee (Lessor) and Jetcrown Industrial (DongGuan) Limited (Lessee).

Nature of Contract: Lease of industrial building and dormitories for production of electronics, plastics and metal precision.

Terms and Conditions: The total area of the factory and dormitory is 8,620 square meters. The rental period is two years, commencing February 16, 2000 to February 15, 2002. Rent for the property is RMB73,270 per month. A deposit of RMB200,000 is required. The Lessee should pay all taxes and government fees. The Lessor will provide staff for the factory during the set-up period of the new enterprise with the Lessee paying the staff's wages and salaries. The delay charge on Lessee's payment of rent is 0.1% of the amount due multiplied by the number of days the rent is overdue.

Consideration: Rent of RMB73,270 per month.

Tenancy Agreement (Exhibit 4.17)

Date: August 23, 2000 and May 11, 2000

Parties: DongGuan Houjie Town Chong Hing Trading Company (Lessor) and Jetcrown Industrial (DongGuan) Limited (Lessee).

Nature of Contract: Lease of industrial building and dormitories at Huangguan Industrial Estate, Ma Tsui, Dongguan, Shenzhen.

Terms and Conditions: The total area of the factory, dormitory and electricity room is 7,390 square meters. The rental period is four years, commencing August 1, 2000 to July 30, 2004. Rent for the property is RMB62,815 per month. A deposit of RMB200,000 is required. The Lessee should pay all taxes and government fees. Rental shall be paid in arrears on or before the 10th day of each month. If the rental becomes overdue, Lessor is entitled to charge a

Edgar Filing: DESWELL INDUSTRIES INC - Form 20-F

penalty of daily rate 0.1% on the amount overdue.

Consideration: Rent of RMB62,815 per month.

Tenancy Agreement (Exhibit 4.18)

Date: January 1, 2002

Parties: Shekou Wan Ha Enterprises Shareholding Co. Ltd. (Lessor) and Jetcrown Industrial (Shenzhen) Limited (Lessee).

Nature of Contract: Lease of Rooms 203, 205-208, 210-212, 214, 216-217, 302-305, 307, 309-310, 312-317, 401, 403-405, 407-416 of the Complex Building, Wan Ha Village, Shekou, Shenzhen and Room 201-203, 205-208, 210-211, 305, 307-310, 402, 404-405, 407, 409, 502-504, 506-507, 510, 514-516, 601, 603-607, 609-614, 616, Block C1, New Wing Village, Shekou. for use as a dormitory.

42

Terms and Conditions: The total construction area for all the rooms is 3,873.77 square meters. The rental period is one year, commencing January 1, 2002 to December 31, 2002. The total rent for the property is RMB61,254.10 per month. A deposit of RMB62,059.10 is required. The Lessee is responsible for the water, electricity and garbage cleaning charges. If any delay of rental payment exceeds 5 days, a late charge penalty of 2% shall be levied on the rental.

Consideration: Rent of RMB61,254.10 per month.

Tenancy Agreement (Exhibit 4.19)

Date: February 15, 2002

Parties: Dongguan Houjie Town Huangguan Industrial Estate Committee (Lessor) and Jetcrown Industrial (Dongguan) Limited (Lessee).

Nature of Contract: Lease of the block of industrial building of 5,210 square meters at Huangguan Industrial Estate and the block of dormitories with an area of 3,410 square meters for running of manufacturing production of electronics, plastics and metal precision etc.

Terms and Conditions: The total area of factory and dormitories is 8,620 square meters. The tenancy period is thirteen and a half months, commencing February 16, 2001 to March 31, 2003. The total rent for the property is RMB8 per square meter per month. A deposit of RMB200,000 is required.

Consideration: Rent of RMB68,960.00 per month.

Tenancy Agreement of Lan Wang Building (Exhibit 4.20)

Date: January 18, 2000 and December 31, 2001

Parties: Kwanasia Electronics Co. Ltd. (Lessor) and Dongguan Cheung On Lan Wang Electronics Development Co. (Lessee).

Nature of Contract: Lease of factory, office and dormitories located at Siu Pin Second Industrial Zone, Cheung On, Dongguan.

Terms and Conditions: The total area for factory is 5,961.72 square meters. The

Edgar Filing: DESWELL INDUSTRIES INC - Form 20-F

total area for the office is 2,831.34 square meters. The total area for the dormitory is 4,107.97 square meters. The total floor area of the guardroom and lobby is 106.76. The total aggregate floor area is 13,007.79 square meters. The rental period is three years, commencing February 15, 2000 to February 14, 2003. 2/F and 3/F of office of area 1,138.41 square meters are for the use of the landlord. Therefore, the new total net area under this tenancy is 11,869.38 square meters. Rental is RMB8.50 per square meter per month. The total net amount of rent for the property is RMB 100,889.73 per month. A deposit of RMB 104,872.32 is required. The Lessor is responsible for the property tax, land use fees and the rental housing management fees. The Lessee is responsible for the water and electricity charges. Upon the expiration of the rental period, Lessee has priority to renew the lease for another three-year period. The Lessee may not transfer or assign the property to a third party. If there is early termination requested by either party, the party that requested the early termination shall indemnify the other party the full rental compensation up to the expiration date.

Consideration: Rent of RMB 100,889.73 per month.

Tenancy Agreement (Exhibit 4.21)

Date: October 1, 2001

Parties: Lee Shu Kwan (Lessor) and Kwanasia Electronics Co. Limited (Lessee).

43

Nature of Contract: Lease of Room 402, Block A, To Fa Court, NanShan District, Shenzhen for a dormitory.

Terms and Conditions: The rental period is two years, commencing October 1, 2001 to September 30, 2003. The rent for the property is HK\$2,500 per month. The Lessee is responsible for all rates, property tax, crown rent and other miscellaneous expenses related to the property. The Lessee may not transfer or assign the property to a third party. If the Lessee desires to renew the lease, the new agreement must be exercised in writing one month before the expiration of the current rental period. If there is early termination requested by either party, the party that requested the early termination shall indemnify the other party the balance of the rental payments of the rental period.

Consideration: Rent of HK\$2,500 per month.

Tenancy Agreement (Exhibit 4.22)

Date: April 1, 2000

Parties: Tam Man Chi (Lessor) and Kwanasia Electronics Co. Limited (Lessee).

Nature of Contract: Lease of Flat A, 11/F, Ho Wah House, Sun Ho City, Shenzhen for a dormitory.

Terms and Conditions: The rental period is two years, commencing April 1, 2000 to March 31, 2002. The rent for the property is HK\$5,000 per month. The Lessee is responsible for all rates, property tax, crown rent and other miscellaneous expenses related to the property. The Lessee may not transfer or assign the property to a third party. If the Lessee desires to renew the lease, the new agreement must be exercised in writing one month before the expiration of the current rental period. If there is early termination requested by either party,

Edgar Filing: DESWELL INDUSTRIES INC - Form 20-F

the party that requested the early termination shall indemnify the other party the balance of the rental payments of the rental period.

Consideration: Rent of HK\$5,000 per month.

"Right of Land Use" Transfer Agreement and Supplementary Agreement (Exhibit 4.23)

Date: January 3, 2000 and July 18, 2000

Parties: Dongguan Houjie Town Huangguan Industrial Estate Committee (Transferor) and Jetcrown Industrial (Dongguan) Limited (Transferee).

Nature of Contract: Sale of Industrial Land located at formerly known as Kam Ngai Po Garden of Huangguan Industrial Estate Committee, Dongguan, Shenzhen for use as factory premises.

Terms and Conditions: The construction area is 117,978 square meters total. The period of right of land use is 50 years, from January 1, 2000 to December 31, 2049. The purchase consideration is RMB135.00 per square meter. The total consideration is RMB15,927,030. The right of land use certificate shall be issued before August 2000.

Consideration: Purchase consideration of RMB15,927,030 in total.

44

TAXATION

UNITED STATES FEDERAL INCOME TAX CONSEQUENCES

General

This section is a general summary of the material U.S. federal income tax consequences of the ownership and disposition of our common shares as of the date of this Report. The summary applies to you only if you hold our common shares as a capital asset for tax purposes (that is, for investment purposes), and it does not purport to be a comprehensive description of all the tax considerations that may be relevant to the ownership of our common shares. The summary is based on current law. Changes in the law may alter your tax treatment of holding our common shares, possibly on a retroactive basis. There can be no assurance that the U.S. Internal Revenue Service ("IRS") will not challenge the tax consequences described below, and we have not requested, nor will we request, a ruling from the IRS or an opinion of counsel with respect to the U.S. federal income tax consequences of acquiring, holding or disposing of our common shares. The discussion below does not cover tax consequences that depend upon your particular tax circumstances and it does not address any aspect of U.S. federal tax law other than U.S. federal income taxation. Specifically, it does not cover any state, local or foreign law, or the possible application of U.S. federal estate or gift tax. You are urged to consult your own tax advisors regarding the application of the U.S. federal income tax laws to your particular situation as well as any state, local, foreign and the U.S. federal estate and gift tax consequences of the ownership and disposition of the common shares. In addition, this summary does not take into account any special U.S. federal income tax rules that apply to a particular holder of our common shares, including, without limitation, the following:

- a dealer in securities or currencies;

Edgar Filing: DESWELL INDUSTRIES INC - Form 20-F

- a trader in securities that elects to use a market-to-market method of accounting for your securities holdings;
- a financial institution;
- a life insurance company;
- a tax-exempt organization;
- a person that holds our common shares in a hedging transaction or as part of a straddle or a conversion transaction;
- a person whose functional currency for tax purposes is not the U.S. dollar;
- a person liable for alternative minimum tax;
- a person that owns, or is treated as owning, 10% or more of our common shares; or
- a person who receives our shares pursuant to the exercise of employee stock options or otherwise as compensation.

Tax Consequences to U.S. Holders

For purposes of the discussion below, you are a "U.S. Holder" if you are a beneficial owner of our common shares who or which is:

- an individual U.S. citizen or resident alien of the United States (as specifically defined for tax purposes);
- a corporation created or organized in or under the laws of the United States or any State or political subdivision thereof;
- an estate whose income is subject to U.S. federal income tax regardless of its source;
- a trust (x) if a U.S. court can exercise primary supervision over the trust's administration and one or more U.S. persons are authorized to control all substantial decisions of the trust or (y) if it was in existence on August 20, 1996, was treated as a U.S. person prior to that date and has a valid election in effect under applicable treasury regulations to be treated as a U.S. person; or
- any other person or entity that would be subject to U.S. federal income tax on a net income basis in respect of the common shares.

If a partnership holds our common shares, the tax treatment of a partner will generally depend upon the status of the partner and upon the activities of the partnership. If you are a partner of a partnership holding our common shares, you should consult your tax advisor.

Distributions

Subject to the passive foreign investment company rules discussed below,

Edgar Filing: DESWELL INDUSTRIES INC - Form 20-F

for cash dividends, the gross amount of any such distribution (other than in liquidation) that you receive with respect to our common shares generally will be taxed to you as dividend income to the extent such distribution does not exceed our current or accumulated earnings and profits ("E&P"), as calculated for U.S. federal income tax purposes. Such income will be includable in your gross income as ordinary income on the date of receipt. To the extent any distribution exceeds our E&P, the distribution will first be treated as a tax-free return of capital to the extent of your adjusted tax basis in our common shares and will be applied against and reduce such basis on a dollar-for-dollar basis (thereby increasing the amount of gain and decreasing the amount of loss recognized on a subsequent disposition of such shares). To the extent that such distribution exceeds your adjusted tax basis, the distribution will be taxed as gain recognized on a sale or exchange of our common shares. See "Sale or Other Disposition of Our Common Shares," below. Because we are not a U.S. corporation, no dividends-received deduction will be allowed to corporations with respect to dividends paid by us.

Sale or Other Disposition of Our Common Shares

Subject to the passive foreign investment company rules discussed below, generally, in connection with the sale or other taxable disposition of our common shares:

- you will recognize gain or loss equal to the difference (if any) between:
 - the amount realized on such sale or other taxable disposition and
 - your adjusted tax basis in such common shares (your adjusted tax basis in the shares you hold generally will equal your U.S. dollar cost of such shares);
- such gain or loss will be capital gain or loss and will be long-term capital gain or loss if your holding period for our common shares is more than one year at the time of such sale or other disposition;
- such gain or loss will generally be treated as having U.S. source for U.S. foreign tax credit purposes; and
- your ability to deduct capital losses is subject to limitations.

Passive Foreign Investment Company

U.S. Holders generally would be subject to a special, adverse tax regime (that would differ in certain material respects from that described above) if we are or were to be classified as a passive foreign investment company ("PFIC") for U.S. federal income tax purposes as to our U.S. Holders.

46

An actual determination of PFIC status is factual in nature and generally cannot be made until the close of the applicable tax year. The Company has not made a specific determination as to whether or not it is in fact a PFIC. We will be a PFIC if either:

- 75 percent or more of our gross income in a taxable year is passive income (including our pro-rata share of the gross income of any company in which we own, or are treated as owning, 25 percent or more of the

Edgar Filing: DESWELL INDUSTRIES INC - Form 20-F

shares by value), which includes dividends, interests, royalties, rents, annuities, and some types of gains; or

- the average percentage of the value of our assets in a taxable year (including our pro-rata share of the assets of any company in which we own, or are treated as owning, 25 percent or more of the shares by value) that produce or are held for the production of passive income is at least 50 percent.

The application of the above tests could result in our classification as a PFIC even in a year in which we have substantial gross revenues from product sales. If we determine that we are a PFIC, we will endeavor to notify you. If you own common shares during any year in which we are a PFIC, you must file IRS Form 8621.

If we are or were classified as a PFIC during the time you hold our shares, unless you timely make one of specific available elections, a special tax regime would apply to both:

- any "excess distribution", which would be your share of distributions in any year that are greater than 125 percent of the average annual distributions received by you in the three preceding years before the current taxable year (or during your holding period for the shares, if shorter) and
- any gain realized on the sale or other disposition of our common shares.

Under this regime, any excess distribution and realized gain would be treated as ordinary income and would be subject to tax generally in the following manner:

- the excess distribution or gain would be allocated ratably to each day that you have held our common shares,
- the amount allocated to the taxable year in which you realize the excess distribution or gain would be taxed as ordinary income,
- the amount allocated to the taxable years prior to the first taxable year in which we are a PFIC would be taxed as ordinary income for the taxable year in which you realize the excess distribution or gain, and
- the amounts allocated to each of the prior taxable years for which we were a PFIC would be taxed as ordinary income at the highest applicable tax rate in effect for that year, and, in addition, an interest charge generally applicable to underpayments of tax would be imposed on you for the tax deferred.

Subject to certain limitations, if you own common shares in a PFIC that are treated as marketable stock, you may make a mark-to-market election. If you make this election, for all taxable years during which you held common shares and we were a PFIC, you would not be subject to the PFIC rules described above. Instead, in general, you would include as ordinary income each year the excess, if any, of the fair market value of your shares at the end of the taxable year over the adjusted tax basis in your shares. You would also be allowed to take an ordinary loss in respect of the excess, if any, of the adjusted basis of your shares over their fair market value at the end of the taxable year, but only to the extent of the net amount of income previously included as a result of the mark-to-market election. Your basis in the shares would be adjusted to reflect any such income or loss amounts. Any gain realized upon disposition would be taxed as ordinary income. If we are or become a PFIC, we believe our shares would be treated as marketable stock for purposes of the mark-to-market election but we can give you no assurance that they in fact will be so treated.

In lieu of making a mark-to-market election, you may make a qualifying electing fund election. In many situations, it would be desirable to make this election. However, even if your tax advisor determines that this

47

election is beneficial to you, if we are or were to become a PFIC, we may not be able or willing to satisfy the record-keeping and other requirements that would enable you to make a qualified electing fund election.

You are urged to consult your own tax advisor concerning the potential application of the PFIC rules to your ownership and disposition of our common shares.

Tax Consequences to Non-U.S. Holders

If you are not a U.S. Holder, you are a "Non-U.S. Holder."

Distributions

You generally will not be subject to U.S. federal income tax, including withholding tax, on distributions made on our common shares unless:

- you conduct a trade or business in the United States and
- the distributions are effectively connected with the conduct of that trade or business (and, if an applicable income tax treaty so requires as a condition for you to be subject to U.S. federal income tax on a net income basis in respect of income from our common shares, such distributions are attributable to a permanent establishment that you maintain in the United States).

If you fail the above test, you generally will be subject to tax in respect of such dividends in the same manner as a U.S. Holder, as described above. In addition, any effectively connected dividends received by a non-U.S. corporation may also, under certain circumstances, be subject to an additional "branch profits tax" at a 30% rate or such lower rate as may be specified by an applicable income tax treaty.

Sale or Other Disposition of Our Common Shares

Generally, you will not be subject to U.S. federal income tax, including withholding tax, in respect of gain recognized on a sale or other taxable disposition of our common shares unless:

- your gain is effectively connected with a trade or business that you conduct in the United States (and, if an applicable income tax treaty so requires as a condition for you to be subject to U.S. federal income tax on a net income basis in respect of gain from the sale or other disposition of our common shares, such gain is attributable to a permanent establishment maintained by you in the United States), or
- you are an individual Non-U.S. Holder and are present in the United States for at least 183 days in the taxable year of the sale or other disposition, and certain other conditions exist.

You will be subject to tax in respect of any gain effectively connected

Edgar Filing: DESWELL INDUSTRIES INC - Form 20-F

with your conduct of a trade or business in the United States generally in the same manner as a U.S. holder, as described above. Effectively connected gains realized by a non-U.S. corporation may also, under certain circumstances, be subject to an additional "branch profits tax" at a rate of 30% or such lower rate as may be specified by an applicable income tax treaty.

Backup Withholding and Information Reporting

Payments (or other taxable distributions) in respect of our common shares that are made in the United States or by a U.S. related financial intermediary will be subject to U.S. information reporting rules. In addition, such payments may be subject to U.S. federal backup withholding at a rate of 30 percent for payments made in 2002. You will not be subject to backup withholding provided that:

- you are a corporation or other exempt recipient, or

48

- you provide your correct U.S. federal taxpayer identification number and certify that no loss of exemption from backup withholding has occurred.

If you are a Non-U.S. Holder, you generally are not subject to information reporting and backup withholding, but you may be required to provide a certification of your non-U.S. status in order to establish that you are exempt.

Amounts withheld under the backup withholding rules may be credited against your U.S. federal income tax liability, and you may obtain a refund of any excess amounts withheld under the backup withholding rules by filing the appropriate claim for refund with the IRS.

The discussion above is for general information only. It does not cover tax consequences that depend upon your particular tax circumstances. You should consult your own tax advisors regarding the application of the U.S. federal income tax laws to your particular situation as well as any state, local, foreign and the U.S. federal estate and gift tax consequences of the ownership and disposition of the common shares.

U.S. FEDERAL INCOME TAX CONSEQUENCES RELATING TO THREE-FOR-TWO STOCK SPLIT

On June 17, 2002, Deswell announced that it is effecting a three-for-two stock split of its outstanding shares to holders record on July 8, 2002 and payable on July 22, 2002. For United States income tax purposes, the receipt of additional common shares by the shareholders in the stock split should be treated as a tax-free stock dividend. Accordingly, no gain or loss should be recognized by our shareholders on the receipt of new common shares. The aggregate tax basis in the old common shares held by a shareholder immediately before the stock split should be allocated between the old and the new common shares in proportion to the relative fair market value of the old and the new shares on the date of the distribution, reduced by the basis allocable to any fractional shares that the shareholder is treated as having redeemed for cash. See -- "Cash in Lieu of Fractional Shares" below. The holding period of the new common shares should include the holding period of the old common shares, provided such shares were held as a capital asset for United States tax purposes.

Cash in Lieu of Fractional Shares. Subject to the PFIC rules (see --

Edgar Filing: DESWELL INDUSTRIES INC - Form 20-F

"Passive Foreign Investment Company" above), shareholders who receive cash in lieu of fractional shares should be treated for U.S. income tax purposes as if the fractional share interest had been issued in the stock split and then had been redeemed by us for cash. The amount of any gain or loss should be equal to the difference between the portion of the tax basis allocated to such fractional share and the cash received in lieu thereof. Any such gain or loss should constitute long-term capital gain or loss provided old common shares were held for more than one year at the time of the stock split.

If we were a PFIC as to a U.S. Holder, gain recognized by such Holder as a result of the receipt of cash in lieu of fractional share would be treated as ordinary income subject to the "excess distributions" rules (see -- "Passive Foreign Investment Company" above).

THE DISCUSSIONS ABOVE ARE FOR GENERAL INFORMATION ONLY. YOU SHOULD CONSULT YOUR OWN TAX ADVISORS REGARDING THE APPLICATION OF THE U.S. FEDERAL INCOME TAX LAWS TO YOUR PARTICULAR SITUATION AS WELL AS ANY STATE, LOCAL, FOREIGN TAX AND THE U.S. FEDERAL ESTATE AND GIFT TAX CONSEQUENCES OF THE OWNERSHIP AND DISPOSITION OF OUR COMMON SHARES AND THE STOCK SPLIT.

BRITISH VIRGIN ISLANDS TAX CONSEQUENCES

Under the International Business Companies Act of the British Virgin Islands as currently in effect, a holder of common equity, such as our common shares, who is not a resident of the British Virgin Islands is exempt from British Virgin Islands income tax on dividends paid with respect to the common equity and all holders of common equity are not liable to the British Virgin Islands for income tax on gains realized on sale or disposal of such shares: The British Virgin Islands does not impose a withholding tax on dividends paid by a company incorporated under the International Business Companies Act.

There are no capital gains, gift or inheritance taxes levied by the British Virgin Islands on companies incorporated under the International Business Companies Act. In addition, our common shares are not subject to

49

transfer taxes, stamp duties or similar charges. There is no income tax treaty or convention currently in effect between the United States and the British Virgin Islands.

ITEM 11. QUANTITATIVE AND QUALITATIVE DISCLOSURES ABOUT MARKET RISK

EXCHANGE CONTROLS

There are no exchange control restrictions on payments of dividends on the Company's common shares or on the conduct of the Company's operations either in Hong Kong, where the Company's principal executive offices are located, or the British Virgin Islands, where the Company is incorporated. Other jurisdictions in which the Company conducts operations may have various exchange controls. There are no material British Virgin Islands' laws which impose foreign exchange controls on the Company or that affect the payment of dividends, interest or other payments to nonresident holders of the Company's common shares. British Virgin Islands' law and the Company's Memorandum and Articles of Association impose no limitations on the right of nonresident or foreign owners to hold the Company's Securities or vote the Company's common shares.

Edgar Filing: DESWELL INDUSTRIES INC - Form 20-F

China's laws and regulations regulate dividend distribution and repatriation by the Company's China subsidiaries. To date these controls have not had and are not expected to have a material impact on the Company's financial results. To the extent that the Company may decide to pay cash dividends in the future, such dividends will be declared from the retained earnings, i.e., surplus, as determined by resolution of the directors of the Company. As the Company is a holding company, the amount of its retained earnings will be limited by the amount of dividends that can be declared by its subsidiaries. Dividends declared by subsidiaries will be based on the profits reported in their statutory accounts prepared in accordance with generally accepted accounting principles in the relevant countries, primarily Hong Kong and China, which differ from U.S. GAAP. See Note 1 of Notes to Consolidated Financial Statements. Further, the Company intends that portions of the profits earned by Jetcrown Shenzhen will be reinvested and therefore such profits will not be available for the declaration of dividends. See Notes 1 and 7 of Notes to Consolidated Financial Statements.

FOREIGN CURRENCY RISK

At March 31, 2000, 2001 and 2002 the Company had no open forward exchange contracts or option contracts.

Cash on hand at March 31, 2002 of \$34,395,000 was held in the following currencies:

	Equivalent U.S. Dollar Holdings -----
United States dollars	\$18,552,000
Hong Kong dollar	7,613,000
Euro dollar	5,706,000
Chinese renminbi	2,524,000

See discussion of Exchange Rate Fluctuation in Item 5. Operating and Financial Review and Prospects.

INTEREST RATE RISK

Our interest expenses and income are sensitive to changes in interest rates, as all of our cash reserves and borrowings are subject to interest rate changes. Cash on hand of \$26,845,000 as at March 31, 2002 was invested in short-term interest bearing investments. As such, interest income will fluctuate with changes in short term interest rates. As of March 31, 2002 we had no long-term debt, short-term bank loans of \$482,000 and \$2,452,000 outstanding on our credit facilities resulting in minimal interest rate risk.

ITEM 12. DESCRIPTION OF SECURITIES OTHER THAN EQUITY SECURITIES.

Not applicable.

Edgar Filing: DESWELL INDUSTRIES INC - Form 20-F

PART II

ITEM 13. DEFAULTS, DIVIDEND ARREARAGES AND DELINQUENCIES

Not Applicable.

ITEM 14. MATERIAL MODIFICATIONS TO THE RIGHTS OF SECURITY HOLDERS AND
USE OF PROCEEDS

Not Applicable.

ITEM 15. [RESERVED]

ITEM 16. [RESERVED]

PART III

ITEM 17. FINANCIAL STATEMENTS

Not Applicable.

ITEM 18. FINANCIAL STATEMENTS

The following financial statements are filed as part of this Report:

	Page No.

Independent Auditors' Report.....	F-1
Consolidated Balance Sheets as of March 31, 2001 and March 31, 2002.....	F-2
Consolidated Statements of Income for the years ended March 31, 2000, March 31, 2001 and March 31, 2002.....	F-3
Consolidated Statements of Shareholders' Equity for the years ended March 31, 2000, March 31, 2001 and March 31, 2002.....	F-4
Consolidated Statements of Cash Flows for the years ended March 31, 2000, March 31, 2001 and March 31, 2002.....	F-5
Notes to Consolidated Financial Statements.....	F-6

All other schedules for which provisions are made in the applicable accounting regulations of the Securities and Exchange Commission are not required under the related instructions or are inapplicable, and therefore have been omitted.

Edgar Filing: DESWELL INDUSTRIES INC - Form 20-F

To the Shareholders and the Board of Directors of
Deswell Industries, Inc.

We have audited the accompanying consolidated balance sheets of Deswell Industries, Inc. and subsidiaries as of March 31, 2001 and 2002, and the related consolidated statements of income, shareholders' equity and cash flows for each of the three years in the period ended March 31, 2002. These financial statements are the responsibility of the Company's management. Our responsibility is to express an opinion on these financial statements based on our audits.

We conducted our audits in accordance with auditing standards generally accepted in the United States of America. Those standards require that we plan and perform the audit to obtain reasonable assurance about whether the financial statements are free of material misstatement. An audit includes examining, on a test basis, evidence supporting the amounts and disclosures in the financial statements. An audit also includes assessing the accounting principles used and significant estimates made by management, as well as evaluating the overall financial statement presentation. We believe that our audits provide a reasonable basis for our opinion.

In our opinion, such consolidated financial statements present fairly, in all material respects, the financial position of Deswell Industries, Inc. and subsidiaries at March 31, 2001 and 2002, and the results of their operations and their cash flows for each of the three years in the period ended March 31, 2002 in conformity with accounting principles generally accepted in the United States of America.

/s/ DELOITTE TOUCHE TOHMATSU

June 28, 2002

Hong Kong

F-1

DESWELL INDUSTRIES, INC.

CONSOLIDATED BALANCE SHEETS
(U.S. DOLLARS IN THOUSANDS, EXCEPT PAR VALUE)

	MARCH 31,	
	2001	2002
ASSETS		
Current assets:		
Cash and cash equivalents	\$25,330	\$31,534

Edgar Filing: DESWELL INDUSTRIES INC - Form 20-F

Restricted cash (note 6)	1,988	2,861
Marketable securities (note 3)	--	1,115
Accounts receivable	15,777	16,888
Inventories (note 4)	12,034	13,225
Prepaid expenses and other current assets	1,833	3,421
Income taxes receivable (note 7)	428	428
	-----	-----
Total current assets	57,390	69,472
Property, plant and equipment-net (notes 5 and 6)	25,563	24,794
Goodwill - net of accumulated amortization of 2001 - \$177 and 2002 - \$212	513	478
	-----	-----
Total assets	\$83,466	\$94,744
	=====	=====

LIABILITIES AND SHAREHOLDERS' EQUITY

Current liabilities:		
Short-term bank loans (note 6)	--	482
Accounts payable	\$ 4,274	\$ 7,583
Accrued payroll and employee benefits	1,837	1,877
Customer deposits	1,850	2,694
Other accrued liabilities	1,776	1,749
Income taxes payable	297	165
	-----	-----
Total current liabilities	10,034	14,550
	-----	-----
Deferred income taxes (note 7)	15	15
	-----	-----
Commitments and contingencies (note 9)	--	--
Minority interests	9,540	10,528
	-----	-----
Shareholders' equity:		
Common Shares \$0.01 par value-authorized 20,000,000 shares, shares issued and outstanding March 31, 2001 - 5,597,931; March 31, 2002 - 5,580,331	56	56
Additional paid-in capital	26,843	26,522
Retained earnings	36,978	43,073
	-----	-----
Total shareholders' equity	63,877	69,651
	-----	-----
Total liabilities and shareholders' equity	\$83,466	\$94,744
	=====	=====

See accompanying notes to consolidated financial statements.

F-2

DESWELL INDUSTRIES, INC.

CONSOLIDATED STATEMENTS OF INCOME
(IN THOUSANDS, EXCEPT PER SHARE DATA)

Edgar Filing: DESWELL INDUSTRIES INC - Form 20-F

	YEAR ENDED MARCH 31,		
	2000	2001	2002
Net sales	\$ 60,958	\$ 80,847	\$ 83,320
Cost of sales	38,262	52,596	54,448
Gross profit	22,696	28,251	28,872
Selling, general and administrative expenses	11,970	15,414	14,939
Operating income	10,726	12,837	13,933
Interest expense	(3)	(6)	(26)
Other income, net	898	915	877
Income before income taxes and minority interests	11,621	13,746	14,784
Income taxes (note 7)	890	315	535
Income before minority interests	10,731	13,431	14,249
Minority interests	433	621	925
Net income	\$ 10,298	\$ 12,810	\$ 13,324
Net income per share (note 2)			
Basic:			
Net income per share(1)	\$ 1.90	\$ 2.38	\$ 2.38
Weighted average common shares outstanding	5,412	5,376	5,602
Diluted:			
Net income per share(1)	\$ 1.89	\$ 2.36	\$ 2.36
Weighted average common and potential common shares	5,449	5,435	5,644

(1) Net income per share amounts presented above are calculated without regard to the effects of the three-for-two stock split payable on July 22, 2002 (see note 15). Net income per share information calculated on a post split basis is as follows:

Basic:			
Net income per share	\$1.27	\$1.59	\$1.59
Weighted average common shares	8,118	8,064	8,403
Diluted:			
Net income per share	\$1.26	\$1.57	\$1.57
Weighted average common shares	8,174	8,153	8,466

Edgar Filing: DESWELL INDUSTRIES INC - Form 20-F

See accompanying notes to consolidated financial statements.

F-3

DESWELL INDUSTRIES, INC.

CONSOLIDATED STATEMENTS OF SHAREHOLDERS' EQUITY
(U.S. DOLLARS IN THOUSANDS, EXCEPT PER SHARE DATA)

	COMMON STOCK		ADDITIONAL PAID-IN CAPITAL	RETAINED EARNINGS	SH
	SHARES OUTSTANDING	AMOUNT			
Balance at April 1, 1999	5,476,131	\$ 55	\$ 25,355	\$ 23,357	
Repurchase and cancellation of common stock	(128,200)	(2)	(1,255)	--	
Net income	--	--	--	10,298	
Dividends (\$0.88 per share)	--	--	--	(4,777)	
Balance at March 31, 2000	5,347,931	53	24,100	28,878	
Exercise of stock options	250,000	3	2,743	--	
Net income	--	--	--	12,810	
Dividends (\$0.88 per share)	--	--	--	(4,710)	
Balance at March 31, 2001	5,597,931	56	26,843	36,978	
Exercise of stock options	16,500	--	243	--	
Repurchase and cancellation of common stock	(34,100)	--	(564)	--	
Net income	--	--	--	13,324	
Dividends (\$1.29 per share)	--	--	--	(7,229)	
Balance at March 31, 2002	5,580,331	\$ 56	\$ 26,522	\$ 43,073	

The comprehensive income of the Company for the years ended March 31, 2000, 2001 and 2002 was represented by the net income of the respective years.

See accompanying notes to consolidated financial statements.

F-4

DESWELL INDUSTRIES, INC.

CONSOLIDATED STATEMENTS OF CASH FLOWS
(U.S. DOLLARS IN THOUSANDS)

Edgar Filing: DESWELL INDUSTRIES INC - Form 20-F

	YEAR ENDED MARCH 31,		
	2000	2001	2002
Cash flows from operating activities			
Net income	\$ 10,298	\$ 12,810	\$ 13,324
Adjustments to reconcile net income to net cash provided by operating activities:			
Depreciation and amortization	4,784	5,039	4,918
Loss (gain) on sale of property, plant and equipment	35	(52)	7
Minority interests	433	609	925
Changes in operating assets and liabilities:			
Accounts receivable	(2,811)	(5,170)	(1,111)
Marketable securities	(1,174)	1,308	(1,115)
Inventories	(5,030)	(1,102)	(1,191)
Prepaid expenses and other current assets	1,815	462	(1,588)
Income taxes receivable	233	(264)	--
Accounts payable	2,528	(1,127)	3,309
Accrued payroll and employee benefits	67	420	40
Customer deposits	(420)	105	844
Other accrued liabilities	577	576	(27)
Income taxes payable	(99)	196	(132)
Net cash provided by operating activities	11,236	13,810	18,203
Cash flows from investing activities			
Purchase of property, plant and equipment	(6,019)	(13,926)	(4,397)
Proceeds from sale of property, plant and equipment	176	113	276
Additional interest in a subsidiary (note 2)	(6)	--	--
(Increase) decrease in restricted cash	247	141	(873)
Net cash used in investing activities	(5,602)	(13,672)	(4,994)
Cash flows from financing activities			
Dividends paid	(4,777)	(4,710)	(7,229)
Repurchase of common stock	(1,257)	--	(564)
Increase in bank loans	--	--	482
Issue of common stock	--	2,746	243
Contribution from minority shareholders of a subsidiary	--	--	63
Net cash used in financing activities	(6,034)	(1,964)	(7,005)
Net (decrease) increase in cash and cash equivalents	(400)	(1,826)	6,204
Cash and cash equivalents, beginning of year	27,556	27,156	25,330
Cash and cash equivalents, end of year	\$ 27,156	\$ 25,330	\$ 31,534
Supplementary disclosures of cash flow information:			
Additional interest in a subsidiary:			
Goodwill	\$ 224	\$ --	\$ --
Minority interests	(218)	--	--
Cash paid	\$ 6	\$ --	\$ --
Cash paid during the year for:			

Edgar Filing: DESWELL INDUSTRIES INC - Form 20-F

Interest	\$	3	\$	6	\$	26
Income taxes	\$	756	\$	383	\$	669

See accompanying notes to consolidated financial statements.

F-5

DESWELL INDUSTRIES, INC.

NOTES TO CONSOLIDATED FINANCIAL STATEMENTS (U.S. DOLLARS IN THOUSANDS, EXCEPT SHARE DATA)

1. ORGANIZATION AND BASIS OF FINANCIAL STATEMENTS

Deswell Industries, Inc. was incorporated in the British Virgin Islands on December 2, 1993.

The principal activities of the Company comprise the manufacture and sale of injection-molded plastic parts and components, electronic products assembling and metallic parts manufacturing. The selling and administrative activities are performed in the Hong Kong Special Administrative Region ("Hong Kong") of the People's Republic of China ("China") and the manufacturing activities are subcontracted to subsidiaries operating in China.

The financial statements of the Company have been prepared in accordance with accounting principles generally accepted in the United States of America ("U.S. GAAP"), which differ from those used in the statutory accounts of its subsidiaries. The principal adjustment made by the Company to conform the statutory accounts of the subsidiaries to U.S. GAAP relates to the capitalization of pre-operating expenses for the subsidiaries in China.

As the Company is a holding company, the amount of any dividends declared by the Company will be dependent upon the amount which can be dividended up from its subsidiaries. Dividends from subsidiaries will be declared based on profits as reported in their statutory accounts. Such profits will differ from the amounts reported under U.S. GAAP. At March 31, 2002, the retained earnings available for distribution as reflected in the statutory books of the subsidiaries were \$71,171 of which \$4,940 relates to a subsidiary in China, certain of whose retained earnings are intended to be reinvested rather than used to fund dividends in order to obtain favorable tax concessions (note 7).

2. SUMMARY OF SIGNIFICANT ACCOUNTING POLICIES

Principles of consolidation-The consolidated financial statements include the assets, liabilities, revenues, expenses and cash flows of all subsidiaries. Intercompany balances, transactions and cash flows are eliminated on consolidation.

Goodwill-The excess purchase price over the fair value of net assets acquired is recorded on the balance sheet as goodwill and is amortized to expense on a straight line basis over 20 years. Amortization expense was \$32 and \$36 and \$35 for the years ended March 31, 2000, 2001 and 2002, respectively.

Cash and cash equivalents-Cash and cash equivalents include cash on hand, cash accounts, interest bearing savings accounts and time certificates of

Edgar Filing: DESWELL INDUSTRIES INC - Form 20-F

deposit with a maturity of three months or less when purchased.

Marketable securities-All marketable securities are classified as trading securities and are stated at fair market value. Market value is determined by the most recently traded price of the security at the balance sheet date. Net realized and unrealized gains and losses on trading securities are included in other income. The cost of investments sold is based on the average cost method and interest earned is included in other income.

Inventories-Inventories are stated at the lower of cost, determined by the first-in, first-out method, or market. Work-in-progress and finished goods inventories consist of raw materials, direct labour and overhead associated with the manufacturing process.

Prepaid expenses and other current assets-Prepaid expenses and other current assets consist principally of rental deposits, prepaid expenses and other miscellaneous receivables.

Property, plant and equipment-Property, plant and equipment is stated at cost including the cost of improvements. Maintenance and repairs are charged to expense as incurred. Depreciation and amortization is provided on the straight line method based on the estimated useful lives of the assets, as follows:

Leasehold land and buildings	40 - 50 years
Plant and machinery	4 - 5 years
Furniture, fixtures and equipment	4 - 5 years
Motor vehicles	3 - 4 years
Leasehold improvements	over the term of the lease

Valuation of long-lived assets-The Company periodically evaluates the carrying value of long-lived assets to be held and used, including goodwill and other intangible assets, when events and circumstances warrant such a review. The carrying value of a long-lived asset is considered impaired when the anticipated undiscounted cash flow from such asset is separately identifiable and is less than its carrying value. In that event, a loss is recognized based on the amount by which the carrying value exceeds the fair market value of the long-lived asset. Fair market value is determined primarily using the anticipated cash flows discounted at a rate commensurate with the risk involved. Losses on long-lived assets to be disposed of are determined in a similar manner, except that fair market values are reduced for the cost to dispose.

F-6

2. SUMMARY OF SIGNIFICANT ACCOUNTING POLICIES - CONTINUED

Revenue recognition-The Company recognizes revenue at the time the title is passed to customers upon shipment and when collectibility is reasonably assured.

Income taxes-Income taxes are provided on an asset and liability approach for financial accounting and reporting of income taxes. Any China tax paid by the subsidiary during the year is recorded as an amount receivable at year end when an application for reinvestment of profits has been filed and a refund is expected unless there is an indication from the China tax authority that the refund will be refused. Deferred income tax liabilities or assets are

Edgar Filing: DESWELL INDUSTRIES INC - Form 20-F

recorded to reflect the tax consequences in future years of differences between the tax basis of assets and liabilities and the financial reporting amounts at each year end. A valuation allowance is recognized if it is more likely than not that some portion, or all, of a deferred tax asset will not be realized.

Foreign currency translation-The consolidated financial statements of the Company are presented in U.S. dollars as the Company is incorporated in the British Virgin Islands where the currency is the U.S. dollar. The Company's subsidiaries conduct substantially all of their business in Hong Kong dollars, the exchange rate of which has been fixed to the U.S. dollar at approximately HK\$7.80 to \$1.00 since 1983. There is, however, no assurance that this rate will continue indefinitely.

All transactions in currencies other than functional currencies during the year are translated at the exchange rates prevailing on the transaction dates. Related accounts payable or receivable existing at the balance sheet date denominated in currencies other than the functional currencies are translated at period end rates. Gains and losses resulting from the translation of foreign currency transactions and balances are included in income.

The Company's operations in China are integrated with the Company and the majority of their transactions are in Hong Kong dollars. Therefore, the Company's China operations use the Hong Kong dollar as their functional currency and all translation adjustments resulting from the conversion of the financial statements of the Company's China operations to Hong Kong dollars are included in income.

Aggregate net foreign currency transaction losses included in income were \$465, \$644 and \$306 for the years ended March 31, 2000, 2001 and 2002, respectively.

On consolidation, the financial statements of subsidiaries are translated from Hong Kong dollars, being the functional currency of all of the Company's subsidiaries, into U.S. dollars in accordance with Statement of Financial Accounting Standards ("SFAS") No. 52, "Foreign Currency Translation". Accordingly all assets and liabilities are translated at the exchange rate prevailing at the balance sheet date and all income and expenditure items are translated at the average rates for each of the years. The exchange rate between the Hong Kong dollar and the U.S. dollar used for the years ended March 31, 2000, 2001 and 2002 were HK\$7.74 to US\$1.00, HK\$7.75 to US\$1.00 and HK\$7.75 to US\$1.00, respectively.

Post-retirement and post-employment benefits-The Company does not provide post-retirement benefits other than pensions, and post-employment benefits are not material.

Stock-based compensation-SFAS No. 123 "Accounting for Stock-Based Compensation" allows companies which have stock-based awards to employees to adopt a new fair value basis of accounting for stock options and other equity instruments or to continue to apply the existing accounting rules under Accounting Principles Board ("APB") No. 25, "Accounting for Stock Issued to Employees", but with additional financial statement disclosure. The Company accounts for stock-based awards to employees using the intrinsic value method in accordance with APB No. 25 and provides additional disclosures required by SFAS No. 123 in note 11.

Net income per share-Basic net income per share is computed by dividing income available to common holders by the weighted average number of common shares outstanding during the period. Diluted net income per share gives effect to all dilutive potential common shares outstanding during the period. The weighted average number of common shares outstanding is adjusted to include the number of additional common shares that would have been outstanding if the

Edgar Filing: DESWELL INDUSTRIES INC - Form 20-F

dilutive potential common shares had been issued. In computing the dilutive effect of potential common shares, the average stock price for the period is used in determining the number of treasury shares assumed to be purchased with the proceeds from the exercise of warrants and options.

Basic net income per share and diluted net income per share calculated in accordance with SFAS No. 128, "Earnings Per Share", are reconciled as follows (shares in thousands):

F-7

2. SUMMARY OF SIGNIFICANT ACCOUNTING POLICIES - CONTINUED

	YEAR ENDED MARCH 31,		
	2000	2001	2002
Net income	\$10,298	\$12,810	\$13,324
Basic net income per share	\$ 1.90	\$ 2.38	\$ 2.38
Basic weighted average common shares outstanding	5,412	5,376	5,602
Effect of dilutive securities - Options	37	59	42
Diluted weighted average common and potential common shares outstanding	5,449	5,435	5,644
Diluted net income per share	\$ 1.89	\$ 2.36	\$ 2.36

Use of estimates-The preparation of financial statements in conformity with generally accepted accounting principles requires management to make estimates and assumptions that affect the reported amounts of assets and liabilities and disclosures of contingent assets and liabilities at the date of the financial statements and the reported amounts of revenues and expenses during the reporting period. Actual results could differ from those estimates.

Recent changes in accounting standards-In June 2001, the Financial Accounting Standard Board (the "FASB") issued SFAS No. 142, "Goodwill and Other Intangible Assets". SFAS No. 142 provides that goodwill and other intangible assets with indefinite lives will not be amortized, but will be tested for impairment on an annual basis. This statement is effective for fiscal years beginning after December 15, 2001. The Company will adopt this statement on April 1, 2002 and the management is reviewing this statement to determine what effect they will have, if any, on its financial position and results of operations.

In August 2001, the FASB issued SFAS No. 143, "Accounting for Asset Retirement Obligations". This statement addresses the diverse accounting practices for obligations associated with the retirement of tangible long-lived assets and the associated asset retirement costs. The Company will be required to adopt this standard on April 1, 2003. The Company is reviewing the statement to determine what effect it will have, if any, on its financial position and results of operations.

Edgar Filing: DESWELL INDUSTRIES INC - Form 20-F

In August 2001, the FASB also issued SFAS No. 144, "Accounting for the Impairment or Disposal of Long-Lived Assets", that is applicable to financial statements issued for fiscal years beginning after December 15, 2001. The FASB's new rules on asset impairment supersede SFAS No. 121, "Accounting for the Impairment of Long-Lived Assets and for Long-Lived Assets to Be Disposed Of", and portions of APB Opinion No. 30, "Reporting the Results for Operations". The statement requires a single accounting model for long-lived assets to be disposed of and significantly changes the criteria that would have to be met to classify an asset as held-for-sale. Classification as held-for-sale is an important distinction since such assets are not depreciated and are stated at the lower of fair value and carrying amount. The statement also requires expected future operating losses from discontinued operations to be displayed in the period(s) in which the losses are incurred, rather than as of the measurement date as presently required. The Company is reviewing the statement to determine what effect it will have, if any, on its financial position and results of operations.

In April 2002, the FASB also issued SFAS No. 145, "Rescission of FASB Statements No. 4, 44 and 64, Amendment of FASB Statement No. 13, and Technical Corrections", to update, clarify, and simplify certain existing accounting pronouncements. Specifically, SFAS No. 145: (i) Rescinds SFAS No. 4, "Reporting Gains and Losses from Extinguishment of Debt", an amendment of APB Opinion No. 30, and SFAS No. 64, "Extinguishments of Debt Made to Satisfy Sinking-Fund Requirements", which amended SFAS No. 4, as these two standards required that all gains and losses from the extinguishment of debt be aggregate and, if material, classified as an extraordinary item. Consequently, such gains and losses will now be classified as extraordinary only if they meet the criteria for extraordinary treatment set forth in APB Opinion 30, Reporting the Results of Operations - Reporting the Effects of Disposal of a Segment of a Business, and Extra-ordinary, Unusual and Infrequently Occurring Events and Transactions; (ii) Rescinds SFAS No. 44, "Accounting for Intangible Assets of Motor Carriers", an amendment of Chapter 5 of Accounting Research Bulletins No. 43 and an interpretation of APB Opinions 17 and 30, because the discrete event to which the Statement relates is no longer relevant; (iii) Amends SFAS No. 13, "Accounting for leases", to require that certain lease modifications that have economic effects similar to sale-leaseback transactions be accounted for in the same manner as such transactions; (iv) Makes certain technical corrections, which the FASB deemed to be non-substantive, to a number of existing accounting pronouncements. The provisions of SFAS No. 145 related to the rescission of SFAS No. 4 and No. 64 are effective for fiscal years beginning after May 15, 2002. The provisions related to the amendment of SFAS No. 13 are effective for transactions occurring after May 15, 2002. All other provisions of SFAS No. 145 are effective for financial statements issued on or after May 15, 2002. The Company adopted SFAS No. 145 during the year ended March 31, 2002 and it did not impact the Company's financial statements.

F-8

3. MARKETABLE SECURITIES

The Company acquired equity securities listed in Hong Kong.

MARCH 31,

2001

2002

Edgar Filing: DESWELL INDUSTRIES INC - Form 20-F

	-----	-----
Cost	\$ --	\$ 1,081
Unrealized gain	--	34
	-----	-----
Market value	\$ --	\$ 1,115
	=====	=====

Net proceeds from sale of marketable securities for the year ended March 31, 2001 and 2002 were \$1,419 and \$578, and realized gains from sale of marketable securities for the year ended March 31, 2001 and 2002 were \$111 and \$85, respectively. For the purposes of determining realized gains and losses, the cost of securities sold was determined based on the average cost method.

4. INVENTORIES

Inventories by major categories are summarized as follows:

	MARCH 31,	
	-----	-----
	2001	2002
	-----	-----
Raw materials	\$ 6,130	\$ 7,368
Work in progress	2,946	3,213
Finished goods	2,958	2,644
	-----	-----
	\$ 12,034	\$ 13,225
	=====	=====

5. PROPERTY, PLANT AND EQUIPMENT

Property, plant and equipment consists of the following:

	MARCH 31,	
	-----	-----
	2001	2002
	-----	-----
Leasehold land and buildings	\$ 4,940	\$ 4,957
Plant and machinery	21,571	21,953
Furniture, fixtures and equipment	9,722	10,773
Motor vehicles	2,355	2,526
Leasehold improvements	3,187	3,628
	-----	-----
Total	41,775	43,837
Less: accumulated depreciation and amortization	(18,952)	(23,025)
Construction in progress	2,740	3,982
	-----	-----
Net book value	\$ 25,563	\$ 24,794
	=====	=====

6. CREDIT FACILITIES AND PLEDGED ASSETS

Edgar Filing: DESWELL INDUSTRIES INC - Form 20-F

The Company has credit lines with various banks representing trade acceptances, loans and overdrafts. At March 31, 2001 and 2002 these facilities totalled \$17,097, and \$19,515, respectively, of which short-term bank loans, interest bearing at 5.85% per annum, of \$482 was utilized at March 31, 2002 while none of the amount was utilized at March 31, 2001. The maturities of these facilities are generally up to 90 days. Interest rates are generally based on the banks' prime lending rates and the credit lines are normally subject to annual review. There are no significant covenants or other financial restrictions relating to the Company's facilities except that at March 31, 2001 and 2002, cash of \$1,826 and \$2,762, respectively, and leasehold land and buildings of \$1,378 and \$1,348, respectively, have been pledged as collateral for the above facilities. At March 31, 2002, the Company also issued standby letters of credit of \$516 and \$1,936 as a guarantee for the short-term bank loans and a guarantee to certain non-trade creditors respectively.

The restricted cash at March 31, 2001 and 2002 also included \$162 and \$99 deposited into a bank account designated by the Chinese customs department as a guarantee for the payment of customs duties.

F-9

7. INCOME TAXES

The components of income before income taxes and minority interests are as follows:

	YEAR ENDED MARCH 31,		
	2000	2001	2002
Hong Kong	\$ 2,395	\$ 1,462	\$ 1,245
China and others	9,226	12,284	13,539
	\$11,621	\$13,746	\$14,784

HONG KONG

The Company is subject to Hong Kong taxation on its activities conducted in Hong Kong. Each company in Hong Kong files a separate tax return and is subject to tax only on its taxable income arising in, or derived from, Hong Kong.

CHINA

The Company's subsidiaries incorporated in China are subject to Chinese income taxes at the applicable tax rate (currently 10-15%) on the taxable income as reported in their Chinese statutory accounts in accordance with the relevant income tax laws applicable to foreign enterprises. Pursuant to the same income tax laws, the subsidiaries are fully exempt from Chinese income tax for two years starting from the first profit-making year, followed by a 50% exemption for the next three years. The 50% exemption for Jetcrown Industrial (Shenzhen) Limited ("Jetcrown Shenzhen") (a subsidiary of the Company) expired on December 31, 1995 but was further extended from 1999 to 2001. A special exemption was

Edgar Filing: DESWELL INDUSTRIES INC - Form 20-F

granted and Jetcrown Shenzhen was subject to Chinese income taxes at 10% on the taxable income for the year ended March 31, 2002. The Company's other Chinese subsidiaries were either loss making or exempt from income tax in the years ended March 31, 2000, 2001 and 2002.

Pursuant to a further concession in the income tax laws, the Company, as a foreign shareholder in a foreign enterprise in China, is eligible for a refund of taxes paid by its Chinese subsidiaries on the proportion of the after-tax profits of these subsidiaries which are reinvested by the Company in these subsidiaries or in other foreign enterprises in China provided that the reinvestment period relating to such subsidiaries or other foreign enterprises is for at least five years from the date the reinvested funds are contributed. If the reinvestment period is less than five years, the income tax refunded will become payable to the Chinese tax authorities.

During the years ended March 31, 2000, 2001 and 2002, the Company recorded a benefit relating to its decision to reinvest earnings of its Chinese subsidiary, Jetcrown Shenzhen, totaling \$158, \$428 and \$nil, respectively.

Had these tax holidays and concessions not been available, the tax charge would have been higher by \$487, \$866 and \$272 and the basic net income per share would have been lower by \$0.09, \$0.16 and \$0.05 and for the years ended March 31, 2000, 2001 and 2002 respectively, and diluted net income per share for the years ended March 31, 2000, 2001 and 2002 would have been lower by \$0.09, \$0.16 and \$0.05, respectively.

OTHERS

Certain of the Company's income accrues in tax free jurisdictions and is not subject to any income taxes.

The provision for income taxes consists of the following:

	YEAR ENDED MARCH 31,		
	2000	2001	2002
	-----	-----	-----
Hong Kong	\$ 403	\$ 387	\$ 251
China	487	(72)	284
	-----	-----	-----
	\$ 890	\$ 315	\$ 535
	=====	=====	=====

F-10

7. INCOME TAXES - CONTINUED

A reconciliation between the provision for income taxes computed by applying the Hong Kong statutory tax rate to income before income taxes and the actual provision for income taxes is as follows:

YEAR ENDED MARCH 31,

Edgar Filing: DESWELL INDUSTRIES INC - Form 20-F

	2000	2001	2002
Statutory tax rate in Hong Kong	16.0%	16.0%	16.0%
Tax holidays and concessions	(1.0)	(6.3)	0.2
Income not subject to taxation	(8.4)	(9.3)	(13.1)
Increase in valuation allowances	0.7	1.1	0.2
Underprovision of income tax in previous year	0.6	0.3	0.1
Others	(0.2)	0.5	0.2
Effective rate	7.7%	2.3%	3.6%

The components of deferred income tax are as follows:

	MARCH 31,	
	2001	2002
Deferred tax asset:		
Net operating loss carryforwards	\$ 399	\$ 342
Less: Valuation allowances	(310)	(310)
	89	32
Deferred tax liability:		
Property, plant and equipment	(104)	(47)
Net deferred tax liability	\$ (15)	\$ (15)

At March 31, 2002, the net operating loss carryforwards principally related to Kwanta Precision Metal Products Co., Limited ("Kwanta") (a subsidiary of the Company) and can be carried forward indefinitely and applied to reduce Kwanta's future taxable income.

8. RELATED PARTY TRANSACTIONS

The Company rents employee accommodation in China from Mr. S.K. Lee and Mr. M.C. Tam, executive officers of the Company and minority shareholders of Kwanasia (a subsidiary of the Company). The charges for these premises approximate the amount negotiated, in management's opinion, on an arms length basis. Rentals charged by them to the Company are \$12, \$12 and \$12, for the years ended March 31, 2000, 2001 and 2002, respectively.

During the year ended March 31, 2001, the Company acquired a motor car from Unicrown Limited for \$206, which approximated its fair value. Mr. Richard Lau, a director of the Company, has a beneficial interest in that company.

9. COMMITMENTS AND CONTINGENCIES

The Company leases premises under various operating leases, certain of which contain escalation clauses. Rental expenses under operating leases included in the statement of income were \$1,833, \$2,262 and \$2,169 for the years ended March 31, 2000, 2001 and 2002, respectively.

Edgar Filing: DESWELL INDUSTRIES INC - Form 20-F

At March 31, 2002, the Company was obligated under operating leases requiring minimum rentals as follows:

Years ending March 31	
2003	\$1,971
2004	1,195
2005	987
2006	1,004
2007	1,047
2008 and after	1,506

Total minimum lease payments	\$7,710
	=====

At March 31, 2002, the Company had capital commitments for plant and machinery totalling \$3,363 which are expected to be disbursed during the year ending March 31, 2003.

F-11

10. EMPLOYEE BENEFITS

The Company contributes to a state pension scheme run by the Chinese government in respect of its employees in China. The expense related to this plan, which is calculated at 16% of the average monthly salary, was \$83, \$142 and \$281 for the years ended March 31, 2000, 2001 and 2002, respectively. In December 1996, the Company established a defined contribution plan for certain of the employees in Hong Kong. The plan provides for annual contributions by the Company at the rate of 5% of eligible compensation of employees based on length of service and requires contribution by employees at the rate of 5% of eligible compensation. The plan ceased on November 30, 2000. According to the Mandatory Provident Fund ("MPF") legislation regulated by the Mandatory Provident Fund Schemes Authority in Hong Kong, with effect from December 1, 2000, the Company is required to participate in a MPF scheme operated by approved trustees in Hong Kong and to make contributions for its eligible employees. The contributions borne by the Company are calculated at 5% of the salaries and wages (monthly contribution is limited to 5% of HK\$20 for each eligible employees) as calculated under the MPF legislation. The expense related to the plan in the year ended March 31, 2000, that related to the plan and MPF in the year ended March 31, 2001 and that related to MPF in the year ended March 31, 2002 amounted to \$26, \$30 and \$66, respectively.

11. STOCK OPTION PLAN

On March 15, 1995, the Company adopted a stock option plan that permits the Company to grant options to officers, directors, employees and others to purchase up to 450,000 shares of Common Stock. On September 29, 1998, the Company approved an increase of 244,000 shares making a total of 694,000 shares of common stock available under the stock option plan. On January 10, 2002, the Company adopted another stock option plan to purchase up to 500,000 shares of Common Stock. Options granted under the stock option plans will be exercisable for a period of up to 10 years commencing on the date of grant, at a price equal to at least the fair market value of the Common Stock at the date of grant, and may contain such other terms as the Board of Directors or a committee appointed

Edgar Filing: DESWELL INDUSTRIES INC - Form 20-F

to administer the plan may determine. A summary of the option activity (with parenthetical weighted average prices per share) is as follows:

	NUMBER OF STOCK OPTIONS		
	2000	2001	2002
Outstanding at beginning of the year (\$12.59 for 2000, 2001 and \$14.75 for 2002)	440,000	440,000	
Granted during the year (\$15.80 for 2001 and \$17.00 for 2002)	--	10,000	
Exercised during the year (\$10.98 for 2001 and \$14.75 for 2002)	--	(250,000)	
Outstanding and exercisable at end of the year (\$12.59 for 2000, \$14.75 for 2001 and \$16.42 for 2002)	440,000	200,000	
Range of exercise price per share	\$10 to \$14.75	\$10 to \$14.75	\$14.75

The weighted average remaining contractual life of the share options outstanding at March 31, 2002 was 8.76 years. At March 31, 2001 and March 31, 2002, there were 34,000 and nil options available for future grant under the plans respectively.

Since the Company continues to account for its stock-based awards to employees using the intrinsic value method in accordance with APB No. 25, SFAS No.123 requires the disclosure of pro forma net income and net income per share as if the Company had adopted the fair value method, as follows:

	2000	2001	2002
Net income:			
As reported	\$10,298	\$12,810	\$13,324
Pro forma	10,298	12,766	11,775
Basic net income per share:			
As reported	\$1.90	\$2.38	\$2.38
Pro forma	1.90	2.37	2.10
Diluted net income per share:			
As reported	\$1.89	\$2.36	\$2.36
Pro forma	1.89	2.35	2.09

The fair value of options granted in the year ended March 31, 2001 and 2002 was estimated to be approximately \$2.92 and \$2.90 per share respectively using the Black-Scholes option pricing model with the following assumptions:

	2001	2002
Risk-free interest rate - weighted average	4.99%	5.42%
Expected life of options - weighted average	3 years	10 years
Expected volatility	53%	32%
Expected dividend yield	6.17%	7.57%

F-12

12. CONCENTRATIONS OF CREDIT RISK AND MAJOR CUSTOMERS

A substantial percentage of the Company's sales are made to a small number of customers and are typically sold either under letter of credit or on an open account basis. Details of customers accounting for 10% or more of total net sales for each of the three years ended March 31, 2000, 2001 and 2002 are as follows:

	PERCENTAGE OF NET SALES YEAR ENDED MARCH 31,		
	2000	2001	2002
Epson Precision (H.K.) Limited	*	13.0%	17.5%
VTech Telecommunications Limited	22.1%	17.6%	15.3%
Kyocera Mita Industrial Co. (H.K.) Limited	24.0%	18.7%	13.6%
Inter-Tel Incorporated	25.3%	20.0%	11.6%

* Less than 10%

Sales to the above customers relate to both injection-molded plastic parts and electronic products.

Details of the amounts receivable from the five customers with the largest receivable balances at March 31, 2001 and 2002, respectively, are as follows:

	PERCENTAGE OF ACCOUNTS RECEIVABLE MARCH 31,	
	2001	2002
Largest receivable balances	80.5%	67.0%

The Company has not experienced any significant difficulty in collecting its accounts receivable in the past and is not aware of any financial difficulties being experienced by its major customers. There has been no significant bad debt expense during each of the three years ended March 31, 2000, 2001 and 2002 and there was no provision for bad debts at the beginning and end of the three years ended March 31, 2000, 2001 and 2002.

13. FAIR VALUE OF FINANCIAL INSTRUMENTS

The following disclosure of the estimated fair value of financial instruments is made in accordance with the requirements of SFAS No. 107,

Edgar Filing: DESWELL INDUSTRIES INC - Form 20-F

"Disclosures About Fair Value of Financial Instruments". The estimated fair value amounts have been determined by the Company, using available market information and appropriate valuation methodologies. The estimates presented herein are not necessarily indicative of the amounts that the Company could realize in a current market exchange.

The carrying amounts of cash and cash equivalents, restricted cash, marketable securities, accounts receivable, accounts payable and short-term bank loans are reasonable estimates of their fair value. All the financial instruments are for trade purposes.

F-13

14. SEGMENT INFORMATION

The Company has three reportable segments: plastic injection molding, electronic products assembling and metallic parts manufacturing. The Company's reportable segments are strategic business units that offer different products and services. They are managed separately because each business requires different technology and marketing strategies. Most of the businesses were acquired as a unit, and the management at the time of the acquisition was retained.

The accounting policies of the segments are the same as those described in the summary of significant accounting policies. The Company accounts for intersegment sales and transfers as if the sales or transfers were to third parties, that is, at current market prices.

Contributions of the major activities, profitability information and asset information of the Company's reportable segments for the years ended March 31, 2000, 2001 and 2002 are as follows:

	YEAR ENDED MARCH 31,					
	2000			2001		
	NET SALES	INTERSEGMENT SALES	PROFIT (LOSS)	NET SALES	INTERSEGMENT SALES	PROFIT (LOSS)
SEGMENT:						
Injection molded						
plastic parts	\$ 13,010	\$ 39,272	\$ --	\$ 10,571	\$ 50,531	\$ 270
Electronic products	21,140	123	2,145	28,647	25	3,003
Metallic parts	3,968	3,299	(1,063)	5,906	3,942	(1,581)
	-----	-----	-----	-----	-----	-----
SEGMENT TOTAL	\$ 64,380	\$ 3,422	\$ 11,653	\$ 85,084	\$ 4,237	\$ 13,782
RECONCILIATION TO CONSOLIDATED TOTALS:						
Sales eliminations	(3,422)	(3,422)	--	(4,237)	(4,237)	--
Goodwill amortization not allocated to segment	--	--	(32)	--	--	(36)
	-----	-----	-----	-----	-----	-----

Edgar Filing: DESWELL INDUSTRIES INC - Form 20-F

CONSOLIDATED TOTALS:

NET SALES	\$ 60,958	\$ --	\$ 80,847	\$ --
	=====	=====	=====	=====

INCOME BEFORE
INCOME TAXES
AND MINORITY
INTERESTS

\$ 11,621	\$ 13,746
=====	=====

YEAR ENDED MARCH 31,

	2000			2001	
	IDENTIFIABLE ASSETS	CAPITAL EXPENDITURE	DEPRECIATION AND AMORTIZATION	IDENTIFIABLE ASSETS	CAPITAL EXPENDITURE
SEGMENT:					
Injection molded plastic parts	\$ 50,112	\$ 5,119	\$ 2,535	\$ 60,704	\$ 11,811
Electronic products	23,431	600	1,361	26,821	1,588
Metallic parts	5,037	300	856	6,149	521
	-----	-----	-----	-----	-----
SEGMENT TOTALS	\$ 78,580	\$ 6,019	\$ 4,752	\$ 93,674	\$ 13,920
RECONCILIATION TO CONSOLIDATED TOTALS:					
Elimination of receivables from intersegments	(7,288)	--	--	(10,721)	--
Goodwill not allocated to segments	549	--	32	513	--
	-----	-----	-----	-----	-----
CONSOLIDATED TOTALS	\$ 71,841	\$ 6,019	\$ 4,784	\$ 83,466	\$ 13,920
	=====	=====	=====	=====	=====

YEAR ENDED MARCH 31,

	2002		
	IDENTIFIABLE ASSETS	CAPITAL EXPENDITURE	DEPRECIATION AND AMORTIZATION
SEGMENT:			
Injection molded plastic parts	\$ 68,165	\$ 3,916	\$ 2,921
Electronic products	24,508	335	1,444
Metallic parts	4,477	146	518
	-----	-----	-----
SEGMENT TOTALS	\$ 97,150	\$ 4,397	\$ 4,883

RECONCILIATION TO
CONSOLIDATED TOTALS:

Edgar Filing: DESWELL INDUSTRIES INC - Form 20-F

Elimination of receivables from intersegments	(2,884)	--	--
Goodwill not allocated to segments	478	--	35
	-----	-----	-----
CONSOLIDATED TOTALS	\$ 94,744	\$ 4,397	\$ 4,918
	=====	=====	=====

F-14

14. SEGMENT INFORMATION - CONTINUED

All of the Company's sales are coordinated through the Hong Kong subsidiaries and a breakdown of sales by destination is as follows:

	YEAR ENDED MARCH 31,		
	2000	2001	2002
	-----	-----	-----
Net sales			
China	\$25,958	\$44,078	\$46,876
North America	16,488	18,282	19,375
Hong Kong	14,704	15,557	11,690
Europe	3,056	1,763	4,053
Others	752	1,167	1,326
	-----	-----	-----
Total net sales	\$60,958	\$80,847	\$83,320
	=====	=====	=====

The location of the Company's identifiable assets is as follows:

	YEAR ENDED MARCH 31,		
	2000	2001	2002
	-----	-----	-----
Hong Kong	\$46,982	\$47,520	\$53,156
China	24,310	35,433	41,110
Goodwill	549	513	478
	-----	-----	-----
Total identifiable assets	\$71,841	\$83,466	\$94,744
	=====	=====	=====

15. SUBSEQUENT EVENT

On June 17, 2002, the Company announced that it is effecting a three-for-two stock split of its outstanding shares to holders record on July 8, 2002 and payable on July 22, 2002. In conjunction with this stock split and proportionate to it, the Memorandum of Association will be amended effective on

Edgar Filing: DESWELL INDUSTRIES INC - Form 20-F

July 8, 2002 to increase authorized capital to 30,000,000 common shares. This amendment will also result in the par value of its shares converting to no par value per share.

F-15

ITEM 19. EXHIBITS

The following documents are filed as exhibits herewith:

EXHIBIT NO.	DESCRIPTION
1.1	Memorandum and Articles of Association (as amended through March 7, 1995) (incorporated by reference to Exhibit 3.1 to Deswell's Registration Statement on Form F-1 filed with the SEC on June 19, 1995).
1.2	Amendment to Memorandum and Articles of Association filed with BVI Registry of Companies on July 19, 1995 (incorporated by reference to Exhibit 1.2 to Deswell's Annual Report on Form 20-F for the year ended March 31, 2001 filed with the SEC on July 10, 2001).
1.3	Form of Amendment to Memorandum of Association to be filed with BVI Registry of Companies to effect three-for-two stock split and related matters.
2.1	Form of common share certificate (incorporated by reference to Exhibit 4.1 of Amendment No. 1 to Deswell's Registration Statement on Form F-1 filed with the SEC on July 13, 1995).
4.1	Facility letter dated December 13, 2001 between The Sanwa Bank Limited and Jetcrown Industrial Limited.
4.2	Facility letter dated March 2, 2001 between Standard Chartered Bank and Jetcrown Industrial Limited (incorporated by reference to Exhibit 4.2 to Deswell's Annual Report on Form 20-F for the year ended March 31, 2001 filed with the SEC on July 10, 2001).
4.3	Facility letter dated February 20, 2002 between Standard Chartered Bank and Kwanasia Electronics Company Limited.
4.4	Facility letter dated November 1, 2001 between Fortis Bank Asia HK and Kwanasia Electronics Company Limited.
4.5	Facility letter dated November 12, 2001 between CITIC Ka Wah Bank Limited and Kwanasia Electronics Company Limited.
4.6	Facility letter dated February 28, 2002 between Dao Heng Bank Limited and Kwanasia Electronics Company Limited.
4.7	Bank loan letter dated August 20, 2001 between Industrial and Commercial Bank of China and Dongguan Kwan Hong Electronics Company Limited.

Edgar Filing: DESWELL INDUSTRIES INC - Form 20-F

- 4.8 Bank loan letter dated August 15, 2001 between China Construction Bank, Dongguan City Branch and Dongguan Kwan Hong Electronics Company Limited.
- 4.9 Tenancy Agreement dated February 14, 2001 between Shekou Yu Yi Shareholding Co. Ltd. and Jetcrown Industrial (Shenzhen) Limited for the 1st and 2nd Floor, Block A, Wing Village Industrial Estate, Shekou, Shenzhen (incorporated by reference to Exhibit 4.4 to Deswell's Annual Report on Form 20-F for the year ended March 31, 2001 filed with the SEC on July 10, 2001).
- 4.10 Sale and Purchase Agreement dated October 25, 2000 between Shekou Real Property Company and Jetcrown Industrial (Shenzhen) Limited for the 1st to 6th Floor, Block G, Wing Village Industrial Estate, Shekou, Shenzhen (incorporated by reference to the Exhibit 4.5 to Deswell's Annual Report on Form 20-F for the year ended March 31, 2001 filed with the SEC on July 10, 2001).
- 4.11 Tenancy Agreement dated April 25, 2001 between Shekou NanShui Enterprises Shareholding Co. Ltd. and Jetcrown Industrial (Shenzhen) Limited for the 3rd and 4th Floor, Block E, Wing Village Industrial Estate, Shekou, Shenzhen.
- 4.12 Tenancy Agreement dated October 13, 1999 between Shekou NanShui Enterprises Shareholding Co. Ltd. and Jetcrown Industrial (Shenzhen) Limited for the 2nd Floor, Block E, Wing Village Industrial Estate, Shekou, Shenzhen (incorporated by reference to the Exhibit 4.8 to Deswell's Annual Report on Form 20-F for the year ended March 31, 2001 filed with the SEC on July 10, 2001).
- 4.13 Tenancy Agreement dated September 29, 2000 between Shenzhen City Nin Fung Real Property Co., Ltd. and Jetcrown Industrial (Shenzhen) Limited for the 1st to 3rd Floor, Block B, Wing Village Industrial Estate, Shekou, Shenzhen (incorporated by reference to Exhibit 4.11 to

-52-

Deswell's Annual Report on Form 20-F for the year ended March 31, 2001 filed with the SEC on July 10, 2001).

- 4.14 Tenancy Agreement dated April 9, 2001 between Shekou East Empire Industrial Company Limited and Jetcrown Industrial (Shenzhen) Limited for the 2nd Floor to 5th Floor, Block H, Wing Village Industrial Estate, Shekou, Shenzhen (incorporated by reference to Exhibit 4.15 to Deswell's Annual Report on Form 20-F for the year ended March 31, 2001 filed with the SEC on July 10, 2001).
- 4.15 Tenancy Agreement dated December 11, 2000 between Shekou Tai Shen Enterprises Shareholding Co. Ltd. and Jetcrown Industrial (Shenzhen) Limited for the 1st Floor to 5th Floor, Block D Wing Village Industrial Estate, Shekou, Shenzhen (incorporated by reference to Exhibit 4.16 to Deswell's Annual Report on Form 20-F for the year ended March 31, 2001 filed with the SEC on July 10, 2001).

Edgar Filing: DESWELL INDUSTRIES INC - Form 20-F

- 4.16 Tenancy Agreement dated January 20, 2000 between Dongguan Houjie Town Huangguan Estate Committee and Jetcrown Industrial (Dongguan) Limited for the industrial building and dormitory building of the Huangguan Industrial Estate, Houji Town, Dongguan (incorporated by reference to Exhibit 4.17 to Deswell's Annual Report on Form 20-F for the year ended March 31, 2001 filed with the SEC on July 10, 2001).
- 4.17 Tenancy Agreement dated May 11, 2000 and August 23, 2000 between Dongguan Houjie Town Chong Hing Trading Company and Jetcrown Industrial (Dongguan) Limited for the Industrial building, dormitory building and an electricity room of the Huangguan Industrial Estate, Ma Tsui, Houjie Town, Dongguan, Shenzhen (incorporated by reference to Exhibit 4.19 to Deswell's Annual Report on Form 20-F for the year ended March 31, 2001 filed with the SEC on July 10, 2001).
- 4.18 Tenancy Agreement dated January 1, 2002 between Shekou Wan Ha Enterprises Shareholding Co. Ltd. and Jetcrown Industrial (Shenzhen) Limited for Room 203, 205-208, 210-212, 214, 216-217, 302-305, 307, 309, 310, 312-317, 401, 403-405, 407-416, Complex Building, Wan Sha Village, Shekou, Shenzhen and Room 201-203, 205-208, 210-211, 305, 307-310, 402, 404-405, 407, 409, 502-504, 506-507, 510, 514-516, 601, 603-607, 609-614, 616, Block C1, New Wing Village, Shekou.
- 4.19 Tenancy Agreement dated February 15, 2002 between Dongguan Houjie Town Huangguan Industrial Estate Committee and Jetcrown Industrial (Dongguan) Limited for a factory building and a block of dormitory at Huangguan Industrial Estate, Houjie Town, Dongguan.
- 4.20 Tenancy Agreement dated January 18, 2000 and December 30, 2001 between Dong Guan Cheung On Lan Wang Electronics Development Co. and Kwanasia Electronics Co. Ltd. for 1st to 6th Floor, factory building; 2nd to 6th Floor, office building; 1st, 2nd, 4th to 7th Floor, dormitory building; security guard room and lobby of Lan Wang Building, Siu Bin Second Industrial District, Cheung On, Dongguan.
- 4.21 Tenancy Agreement dated October 1, 2001 between Lee Shu Kwan and Kwanasia Electronics Co. Ltd. for Room 402, Block A, To Fa Court, Nanshan District, Shenzhen.
- 4.22 Tenancy Agreement dated April 1, 2000 between Tam Man Chi and Kwanasia Electronic Co. Ltd. for Flat A, 11th Floor, Ho Wah House, Sun Ho City, Shenzhen (incorporated by reference to Exhibit 4.22 of Deswell's Form 20-F for the year ended March 31, 2001 filed with the SEC on July 10, 2001).
- 4.23 Right of Land Use Transfer Agreement and Supplementary Agreement dated January 3, 2000 and July 18, 2000 between Dongguan Houjie Town Huangguan Industrial Estate Committee and Jetcrown Industrial (Dongguan) Limited for the Industrial Land located at formerly known as Kam Ngai Po Garden of Huangguan Industrial Estate Committee, Dongguan, Shenzhen (incorporated by reference to Exhibit 4.23 to Deswell's Annual Report on Form 20-F for the year ended March 31, 2001 filed with the SEC on July 10, 2001).
- 4.24 2001 Stock Option Plan (incorporated by reference to Exhibit A to the Company's Proxy Statement for its 2001 Annual Meeting of Stockholders filed with the SEC under cover of Form 6-K on

Edgar Filing: DESWELL INDUSTRIES INC - Form 20-F

December 12, 2001.)

- 8.1 Diagram of the Company's operating subsidiaries and affiliates -
(see page 18 of this report)
- 10.1 Consent of Independent Auditors' to incorporation of report on the
Company's consolidated financial statements into Registrant's
Registration Statements on Form S-8.

-53-

SIGNATURES

Pursuant to the requirements of Section 12 of the Securities Exchange Act of 1934, the registrant certifies that it meets all of the requirements for filing on Form 20-F and has duly caused this annual report to be signed on its behalf by the undersigned thereunto duly authorized.

DESWELL INDUSTRIES, INC.

Date: July 9, 2002

By: /s/ Richard Lau

Richard Lau
Chairman of the Board and
Chief Executive Officer

-54-